



The Mercedes-Benz eSprinter.

Panel Van model.

Prices effective from 9 August 2021.

Mercedes-Benz





Contents

> Model overview	3
> Trims	
eSprinter PROGRESSIVE	4
> Colours and Upholstery	5
> Equipment	6
> Charging options	11
> Battery and eMotor	12
> Range, Performance and CO₂ emissions	13
> Weights and payloads	13
> Dimensions	14
> eReady finance	
Latest eSprinter Panel Van offer	15
> List prices	16
> EQ Ready App	17
> After care	18

Please note

This document provides information about the model range line-up and specifications of the Sprinter. It also contains key details about options, economy and performance of all variants. Details are correct at time of publication and are subject to revision. Any images used in this document may not reflect UK specification and are for illustrative purposes only. Images may show optional equipment which does not form part of UK standard specification.

The Mercedes-Benz eSprinter.

1 van model:	Panel Van – 3 seats
1 length:	5,932mm
1 trim:	PROGRESSIVE
3 charging powers:	AC: 7.2kW DC: 20kW DC: 80kW
3 linear speed limiters:	75mph (Standard) 62mph (Optional) 50mph (Optional)

Combined WLTP ranges:

82.6 miles (75mph speed limiter) –
95.7 miles (50mph speed limiter)*

Charging times:*

- AC charging **0-100% in 8 hours**
- DC 20kWh **up to 80% in 2 hours**
- DC 80 kWh **up to 80% in 30 minutes**



Discover more about the other Mercedes-Benz Sprinter diesel models in our range:

▶ [The Sprinter diesel range](#)

Discover more about the other Mercedes-Benz electric models:

▶ [The electric vehicles range](#)

*Charging times are subject to the power available at the location where the vehicle will be charged as well as factors such as temperature and cable type used. Time stated is based on 7.4/80 KW power available.

The eSprinter PROGRESSIVE.

Features include:

Interior

- Charging cable, mode 3 (type 2, 3x20A), 8m
- Comfort overhead control panel
- Driver's armrest
- Dual Passenger seat
- Full-width partition
- Heated seat for driver
- Height and rake steering wheel
- Hinged lid for stowage compartment
- Semi-automatic TEMPATIC air conditioning
- Wooden flooring

Exterior

- 270° double-wing rear-end doors
- Headlight assistant
- Heat-insulating glass
- Linear speed limiter 75mph

Efficiency, reliability and connectivity

- Active Brake assist
- ADAPTIVE ESP*
- ATTENTION assist
- Crosswind assist
- Double locks
- Integrated connected Thatcham approved alarm system
- Keyless start
- Mercedes-Benz audio system with DAB radio, a Bluetooth® interface, hands-free function and USB port
- Mercedes PRO connect (via an App)

From £51,950[^]

[^]Based on an eSprinter Van PROGRESSIVE L2 H2 FWD (DC 20kW)

• 1 length available • Charging times[†]

L2: 5,140mm

AC: 0-100% – 8 hours using the Wallbox Type 2: (2 x 16A | 7.2kW)

DC: 10-80% – 120 min using rapid charging DC 20kW

DC: 10-80% – 30 min using rapid charging DC 80kW

Government OZEV grant of up to £6,000

The eSprinter is eligible for a Government OZEV grant that gives businesses 35% off the purchase price, up to a maximum of £6,000*.



▶ Arrange a test drive at your nearest Dealership

* Vehicle purchase price is calculated on base vehicle only (excluding any optional equipment), it excludes delivery charges and first registration fee. The grant will be applied after any vehicle discount has been offered and includes VAT and number plate costs. For more information, visit: <https://www.gov.uk/plug-in-car-van-grants>

[†] Charging times are subject to the power available at the location where the vehicle will be charged as well as factors such as temperature and cable type used. Time stated is based on 7.4/80 KW power available.



The Mercedes-Benz eSprinter 4

Colours and upholstery.

Solid paints



Arctic White (Standard)



Jupiter Red



Steel Blue



Blue Grey



Jet Black

Metallic paints



Cavansite Blue Metallic



Tenorite Grey Metallic



Selenite Grey Metallic

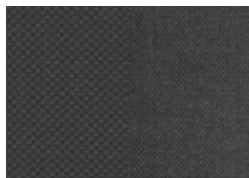


Obsidian Black Metallic

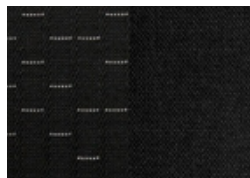


Iridium Silver Metallic

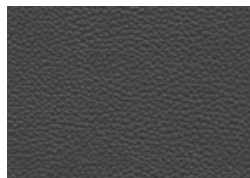
Interior upholstery



Maturin black fabric
(Standard)



Caluma black fabric



Black ARTICO man-made
leather

➤ [For paint pricing, see page 6](#)

➤ [For upholstery pricing, see page 7](#)

Equipment (standard and optional overview).

Every eSprinter model comes with a host of standard features, plus a range of optional equipment and packages you can add to enhance your van.

Key: ● Standard ○ Optional ◇ Equipment dependant option available — Not available

Equipment	Description	Option code	Progressive Panel Van	Basic Price exc. VAT	Basic Price inc. VAT
Exterior Features					
Paint	Metallic paint	/	○	£565.00	£678.00
Bodywork	Mounting rails for roof rack	D13	○	£170.00	£204.00
Tyres	Mud and slush tyres The M+S tyres can improve traction and lateral support in wintry road conditions, improving driving safety on snow, ice and mud.	RM1	○	£145.00	£174.00
	Summer Tyres	RM7	●	£0.00	£0.00
Wheels	16" Steel Wheels	RS3	●	£0.00	£0.00
	16" Full wheel cover	RD8	○	£95.00	£114.00
	16" Black Light Alloy Wheels	RM3	○	£755.00	£906.00
	16" Light Alloy Wheel	RL5	○	£650.00	£780.00
Interior Features					
Grab Handles	Grab handles for driver's and co-driver's doors	T75	○	£65.00	£78.00
Heating and Ventilation	Heated driver's seat	H16	●	£0.00	£0.00
	Heated co-driver's seat	H15	○	£155.00	£186.00
	TEMPMATIC air conditioning Cools and dehumidifies the air. Features a particulate filter to remove particles of dust and pollen from the outside air.	HH9	●	£0.00	£0.00
Seating	Comfort driver's seat Single armrest on the side facing the front passenger; fore/aft adjustment (225mm in total, with 4.5mm intervals); stepless adjustment of the seat backrest angle; stepless seat height adjustment; comfort head restraint adjustable for angle and height.	SB1	○	£110.00	£132.00
	Comfort co-driver's seat Comfort driver and co-driver seat with inboard armrests and 4-way adjustable headrests. This deletes the double co-driver seat and therefore limits the cab area to two occupants.	SB2	○	£110.00	£132.00
	Double co-driver's seat Bench seat with 2x three-point seat belts, height-adjustable head restraints, and a fixed 17° backrest.	S23	●	£0.00	£0.00

Changes to individual option availability and combinations may occur depending on vehicle specification choices and the continuing evolution and adaptation of our product range. These changes may not be immediately reflected in this document as they occur, but will be introduced at the next revision opportunity.

Equipment (standard and optional overview).

Equipment	Description	Option code	Progressive Panel Van	Basic Price exc. VAT	Basic Price inc. VAT
Interior Features (cont.)					
Seating (cont.)	Lumbar support for driver's seat Electro-pneumatically operated dual-cushion 4-way lumbar support, adjusted using a switch on the outer side of the seat cushion. The position of the air cushions can also be adjusted for height.	SE5	○	£65.00	£78.00
	Lumbar support for co-driver's seat Not compatible with Double co-driver seat (S23).	SE4	○	£65.00	£78.00
Steering Wheel	Height and rake adjustable steering wheel Manually adjustable by 4.8° in tilt and 60mm in / out.	CL1	●	£0.00	£0.00
Storage	Hinged lid for stowage compartments left and right	FJ5	○	£95.00	£114.00
	Stowage compartment underneath cockpit	FJ4	●	£0.00	£0.00
	Storage overhead compartment - driver's side	FX0	○	£60.00	£72.00
Trim and Upholstery	Black Maturin fabric seat upholstery	VF7	●	£0.00	£0.00
	Black Caluma fabric seat upholstery	VF4	○	£60.00	£72.00
	Black ARTICO seat upholstery The black man-made leather lends the interior a comfortable aspect and impresses with its low-maintenance surface.	VF6	○	£60.00	£72.00
Technology, Software and Electrics					
Audio Entertainment	MB Audio System DAB Radio and USB socket	E10 / E1D	-	£0.00	£0.00
Keys	Two additional master keys	FZ9	○	£110.00	£132.00
Driver's Assistance and Safety					
Airbags	Driver's airbag	SA5	●	£0.00	£0.00
	Co-driver's airbag	SA6	○	£320.00	£384.00
	Driver's thorax-pelvis sidebag	SH1	○	£235.00	£282.00
	Co-driver's thorax-pelvis sidebag	SH2	○	£235.00	£282.00
Driver's Assistance	Active Brake assist Active Brake assist can help to prevent accidents with vehicles ahead and crossing pedestrians or to mitigate their consequences.	BA3	●	£0.00	£0.00
	ATTENTION assist The ATTENTION assist drowsiness detection system can recognise early signs of fatigue on long routes and night-time drives, and prompt the driver to take a break from driving.	JW8	●	£0.00	£0.00

● Standard ○ Optional ◇ Equipment dependant option available — Not available

Equipment (standard and optional overview).

Equipment	Description	Option code	Progressive Panel Van	Basic Price exc. VAT	Basic Price inc. VAT
Driver's Assistance and Safety (cont.)					
Driver's Assistance (cont.)	Blind Spot assist Blind Spot assist can help prevent accidents when changing lanes, for example on the motorway. Includes: Electrically foldable exterior mirrors (F64) and Exterior mirror heated and electrically adjustable (F68).	JA7	○	£420.00	£504.00
	Comfort overhead control panel LED interior lighting including cab downlighting and co-/driver reading lamps; also includes a convenient spectacles compartment.	LC4	●	£0.00	£0.00
	Crosswind assist Crosswind assist detects track offset caused by strong crosswind gusts in due time and helps the driver to stay in lane.	JA8	●	£0.00	£0.00
	Headlight Assistant A windscreen sensor continuously monitors light conditions and automatically switches the dipped beams on/off upon reaching pre-defined limits.	LA2	●	£0.00	£0.00
	Highbeam assist Highbeam assist automatically switches the main beams on and off in line with the traffic situation and thereby relieves the driver of manually switching back and forth between main beams and dipped beams.	LA1	○	£265.00	£318.00
	Jack	Y36	●	£55.00	£66.00
	Lane Keeping assist Lane Keeping assist can help prevent accidents caused by unintentional lane departures with visual, audible and tactile signals.	JW5	○	£0.00	£0.00
	Rain sensor The rain sensor automatically regulates the wiping frequency of the windscreen wipers with activated intermittent wiping, which makes things easier for the driver.	JF1	○	£105.00	£126.00
	Reversing camera with display in rear view mirror	FR3	○	£505.00	£606.00
	Reversing warning device The reverse warning alarm warns pedestrians and other road users audibly of the reversing vehicle and thereby enhances their safety.	JW0	○	£170.00	£204.00
	Speed Limiter (50 mph)	MK5	○	£0.00	£0.00
	Speed Limiter (62 mph)	MD2	○	£0.00	£0.00
	Speed Limiter (75 mph)	MD3	●	£0.00	£0.00
	Wet Wiper System The WET WIPER SYSTEM windscreen wiper cleans the window without the splash of water that usually briefly disrupts the driver's field of view. Includes: Rain sensor (JF1).	FM3	○	£105.00	£126.00

● Standard ○ Optional ◇ Equipment dependant option available — Not available

Equipment (standard and optional overview).

Equipment	Description	Option code	Progressive Panel Van	Basic Price exc. VAT	Basic Price inc. VAT
Driver's Assistance and Safety (cont.)					
Safety Equipment	Accident recovery and roadside assistance The vehicle will automatically call the Mercedes-Benz Customer Assistance Center at a press of a button to provide the driver with professional help in the event of an emergency.	EY6	●	£0.00	£0.00
	First aid kit	Y10	○	£0.00	£0.00
Safety Equipment	Fire extinguisher	Y16	○	£105.00	£126.00
	Warning Triangle	Y44	○	£0.00	£0.00
Security	Anti-theft protection package Thatcham category 1 approved. Cab interior and load-space monitoring with battery back-up siren and tow-away protection.	FY1	●	£0.00	£0.00
	Double Locks	FY2	●	£0.00	£0.00
Lighting					
Lighting	Front fog lights with cornering function	L13	○	£200.00	£240.00
	LED lightstrip in load compartment	LC2	○	£250.00	£300.00
Loading and Towing					
Bulkhead	Full-width partition The full-width bulkhead at B-pillar protects driver and front passenger from the load and shields the driver compartment from the load compartment, keeping dirt, dust and noise away from the driver's compartment.	D50	●	£0.00	£0.00
	Full-width partition with 1 window The full-width partition wall on the B-pillar with window allows a view into the cargo area or the view to the rear and shields the driver's compartment from the load compartment.	D51	○	£65.00	£78.00
Load Area	Interior wood panelling to roof height in load compartment The 5mm-thick wooden panelling of the vehicle sidewalls extending up to roof height protects the sheet metal in the load compartment from damage caused by the cargo.	VA2	○	£295.00	£354.00
	Load securing rail system	VV2	○	£200.00	£240.00
	Plastic Floor covering	VK8	○	£455.00	£546.00
	Wood load flooring Multiple-bonded 10mm thick weatherproof plywood floor, coated with hard-wearing phenolic resin film, and featuring a non-slip textured grid surface.	V43	●	£0.00	£0.00

● Standard ○ Optional ◇ Equipment dependant option available — Not available

Equipment (standard and optional overview).

Equipment	Description	Option code	Progressive Panel Van	Basic Price exc. VAT	Basic Price inc. VAT
Mirrors and Windows					
Mirrors	Electrically folding wing mirrors Fold-in/out function is operated via controls in the driver door.	F64	○	£50.00	£60.00
	Heated, electrically adjustable wing mirrors Mirror heating reduces condensation in cold weather and prevents icing-up of the mirrors. The exterior mirrors are heated automatically upon vehicle start when the outside temperature is low or when the rear defrost function is activated.	F68	○	£170.00	£204.00
Windows	Heat-insulating glass Windscreen (laminated glass), side windows and rear window (single-pane safety glass) are tinted green, reducing the sunlight's heating effect on the interior.	H20	○	£130.00	£156.00
	Heat-insulating glass with band filter Green-tinted window panes and a dark filter band on the windscreen.	H21	●	£0.00	£0.00
Charging Accessories					
Cables	4m Charging cable (spiral) Type 2. 3x20A	E4L	○	£321.00	£354.00
	4m Charging cable (straight) Type 2. 3x 32A	E3L	○	£405.00	£486.00
	8m Charging cable (straight) Type 2. 3x20A	E8L	●	£0.00	£0.00

● Standard ○ Optional ◇ Equipment dependant option available — Not available

Charging options – maximise efficiency and reduce downtime.

› The eSprinter can be charged via Direct Current (DC) and Alternating Current (AC).

The DC option offers speed, while AC is more cost effective for overnight charging. When choosing your eSprinter you have a choice of two DC rapid charging power variant options†:

- DC 80kW: 10 – 80% charge in 30 minutes
- DC 20kW: 10 – 80% charge in 2 hours.

DC is available at most UK service stations and will charge your vehicle faster but requires more energy to do so. Both eSprinter variants can also be charged via AC.

AC requires longer intervals to fully charge† but uses less energy:

- AC 7.2kW: 0-100% in 8 hours.

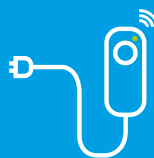
› Managing range and battery performance.

The eSprinter uses a process called recuperation that recovers energy when the vehicle is decelerating to help you efficiently manage your vehicle's range. There are 4 recuperation modes available, which can be adjusted via the gearshift paddles. The greater the recuperation, the faster you decelerate and therefore, the more energy your vehicle will regenerate:

- D- This mode will enable you to get maximum range from your Sprinter. It has maximum recuperation and fastest deceleration. Due to the deceleration being so strong, your vehicle will automatically activate your brake lights.
- D This mode has less recuperation than D- and has similar deceleration levels to a diesel Sprinter.
- D+ This mode has significantly lower recuperation levels and therefore will decelerate at a slower rate than a diesel Sprinter.
- D++ This is a coasting mode, meaning your vehicle will have no deceleration and will significantly reduce your vehicle's range.

Free Smart Charge Point available*

We'll install a NewMotion Home Fast Smart charge point at your home for smart, safe and convenient charging.



† Charging times are subject to the power available at the location where the vehicle will be charged as well as factors such as temperature and cable type used. Time stated is based on 7.4/80 KW power available.



The Mercedes-Benz eSprinter

Battery and eMotor.

	PROGRESSIVE	
Fuel	Electricity	
eMotor output, max.	85kW	
	114hp	
Combined WLTP ranges	82.6 miles (75mph speed limiter) – 95.7 miles (50mph speed limiter)*	
Torque, max.	295Nm	
Driven Axle	Front	
Battery Composition	Lithium Ion	
Battery Capacity	55kWh (47kWh useable)	
Battery Voltage	365	
Battery Charging Power	AC: 7.4kW / DC: 20kW	AC: 7.4kW / DC: 80kW
Battery Charging Time	AC: 0-100% – 8 hours DC: 10-80% – 120 minutes**	AC: 0-100% – 8 hours DC: 10-80% – 30 minutes**
Charging cable	8m long – Type 2, 3x20a Other cables available – please see page 10	

* Figures correct as of March 2021. For real time data visit https://voc.i.daimler.com/voc/gb_en.

** Charging times are subject to the power available at the location where the vehicle will be charged as well as factors such as temperature and cable type used. Time stated is based on 7.4/80 KW power available.

Did you know the average commercial vehicle in Europe does less than 62 miles[^] a day?

[^] Mercedes-Benz research analysed 1.6 million journeys anonymously on the EQ Ready app and 96% of all journeys recorded were shorter than 100km (62 miles).

Range, performance and CO₂ emissions.

Model	Speed Limiter	CO ₂ emissions (g/km)	WLTP Range (Miles)					WLTP Range (Km)				
			Combined	Low (Extra Urban)	Medium (Urban)	High (Rural)	Extra High (Motorway)	Combined	Low (Extra Urban)	Medium (Urban)	High (Rural)	Extra High (Motorway)
Panel Van – PROGRESSIVE												
eSprinter Van L2 H2	120km/h (75mph) standard	0	82.6	109.4	101.3	87.6	67.1	133	176	163	141	108
eSprinter Van L2 H2	80km/h (50mph) standard	0	95.7	109.4	101.3	92.6	93.8	154	176	163	149	151

Model	Speed Limiter	Energy Consumption (WLTP) kWh/100km				
		Combined	Low (Extra Urban)	Medium (Urban)	High (Rural)	Extra High (Motorway)
Panel Van – PROGRESSIVE						
eSprinter Van L2 H2	120km/h (75mph) standard	40.9	30.9	33.4	38.6	50.7
eSprinter Van L2 H2	80km/h (50mph) standard	35.8	30.9	32.6	36.6	36.5

Other speed limiters available (100km/h). Data shown illustrates the minimum and maximum range and consumption altered by speed limiters.

The indicated values were determined according to the prescribed measurement method – Worldwide Harmonised Light Vehicle Test Procedure (WLTP). Figures shown may include options which are not available in the UK. For Battery Electric Vehicles (BEV) figures determined with battery fully charged. The Mercedes-Benz eSprinter requires mains electricity for charging. Figures shown are for comparability purposes; only compare consumption, CO₂ and electric range figures with other vehicles tested to the same technical procedures. Figures may not reflect real life driving results, which will depend upon a number of factors including the starting charge of the battery, factory-fitted options, accessories fitted (post registration), variations in weather, driving styles and vehicle load. Zero emissions while driving. Further information about the test used to establish figures can be found at <http://www.mercedes-benz.co.uk/WLTP>

Weights and payloads.

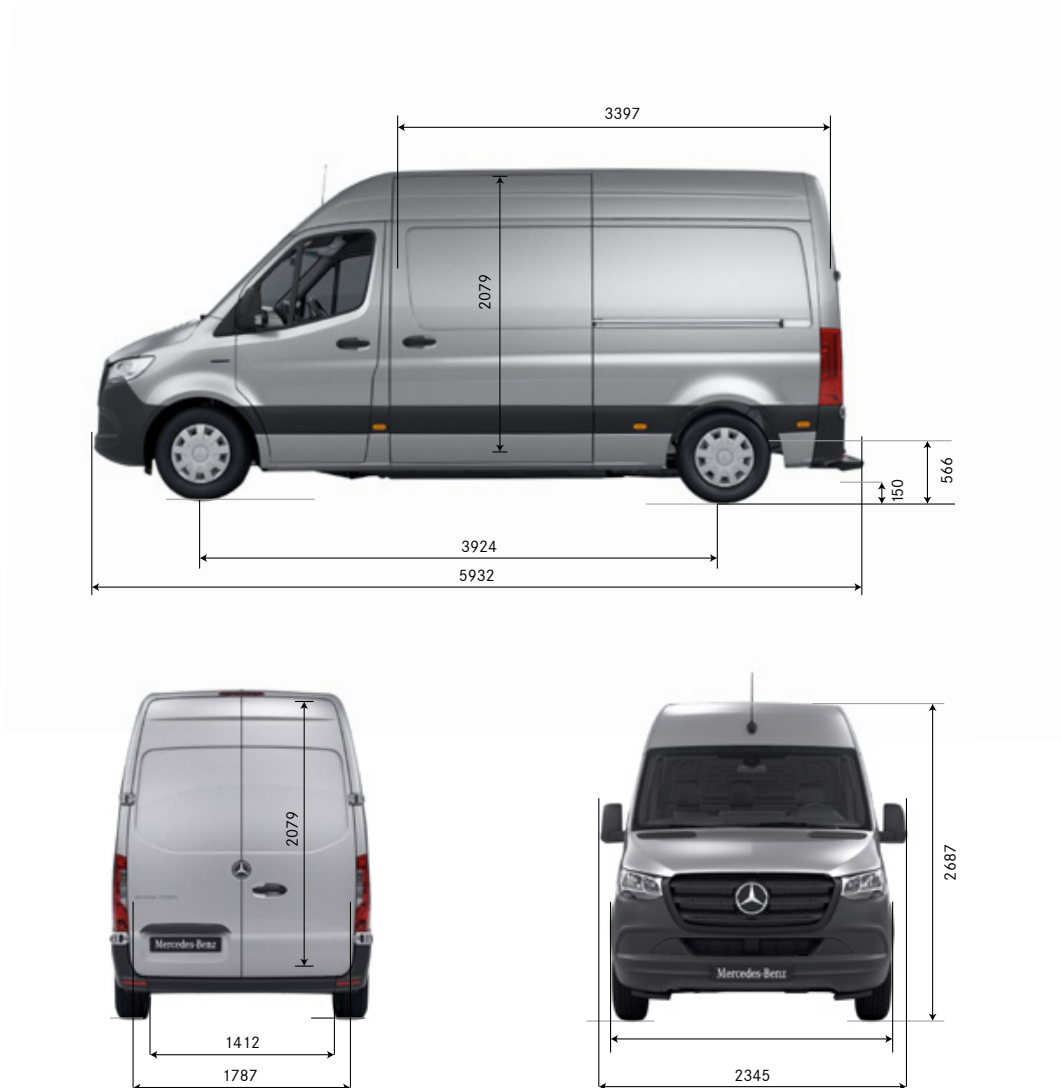
Model	Gross Vehicle Weight (Kg)	Unladen Weight (Kg)	Payload (Kg)	Gross Train Weight (Kg)
Panel Van – PROGRESSIVE				
eSprinter Van L2 H2	3,500	2,769	731	3,500

Please note: The stated payload weights are correct according to type approval data. The specific payload values for UK supplied vehicles may differ. The figure quoted only accounts for equipment which is included in the UK product offer as standard. Please speak to a dealer for final vehicle configurations and weights once all options and accessories have been added.

Dimensions.

FRONT-WHEEL DRIVE L2

Wheelbase	Wheelbase length	3,924mm
	Turning circle	15.7m
	Track circle	14.9m
	Front track width	1,759mm
	Rear track width	1,770mm
Vehicle	Length	5,932mm
	Height (unladen)	2,687mm
	Width (inc. wing mirrors)	2,345mm
	Ground clearance	150mm
Load compartment	Length	3,397mm*
	Load volume	11m ³
	Max. width	1,787mm
	Width between wheel arches	1,412mm
	Height	2,079mm
	Rear loading height (step height from ground to load floor)	566mm



* Measured on vehicle floor and includes 370mm for the space beneath the front seats.

eReady finance – the flexible way to purchase your electric van.

If you're interested in an electric van but the idea of a lengthy finance agreement puts you off, our flexible eReady finance terms start from as little as 12 months. This allows you to make the switch with a level of commitment you feel comfortable with, and with a wide range of options at the end.

- Flexible finance terms available, starting from 12 months
- Love your electric van? You can purchase it at the end of the agreement
- Want to explore your options? Regularly review your finance and vehicle options, then return or part-exchange the van at the end of your contract
- Switch to another electric van in the Mercedes-Benz range when new models become available.

▶ [Learn more about our finance options](#)

or if you'd preferred to talk to a Dealer, find the nearest one to you:

▶ [Find your preferred Dealer](#)

Latest eSprinter Panel Van offer

Based on an eSprinter Van PROGRESSIVE L2 H2 80kW*

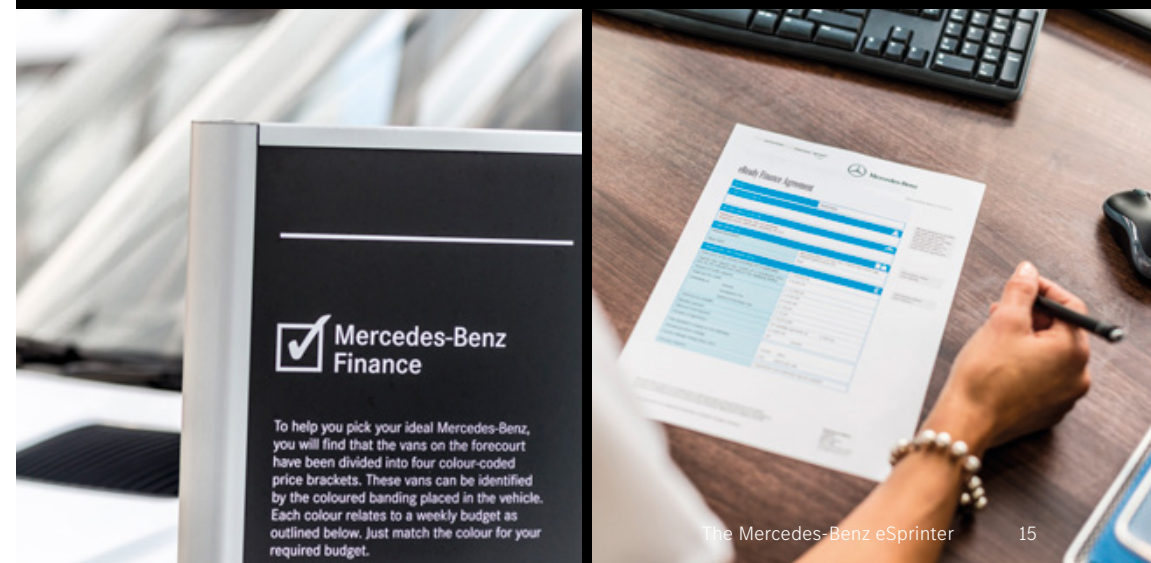


Finance Monthly Rental	£555.00
Optional Service Care Payment	£10.00
Total Monthly Rental	£565.00
Advance Rental	£3,330.00
Excess Mileage Charge ex. VAT	20 pence per mile

* BUSINESS USERS ONLY.

- 36 month (6+35) Contract Hire agreement.
- 10,000 miles per annum.
- Monthly payment includes the cost of a 36 month Optional Service Care agreement at £10.00 a month, but excludes the cost of other repairs and maintenance.
- Mileage and damage charges apply.
- All prices exclude VAT at 20%.
- Orders/credit approvals on selected eSprinter Van PROGRESSIVE L2 H2 80kW models only between 01 July 2021 and 30 September 2021, registered by 31 December 2021.
- Mercedes-Benz Finance MK15 8BA.

Prices are correct at time of going to press 08/2021. All prices are subject to any fiscal or legislative changes.



The Mercedes-Benz eSprinter 15

List prices.

Model	DC Charging Power	Drive	Basic Recommended Retail Price (Ex. VAT)	Basic Recommended Retail Price (Inc. VAT)
Panel Van – PROGRESSIVE				
eSprinter Van L2 H2	20kW	FWD	£53,510	£64,212
eSprinter Van L2 H2	80kW	FWD	£54,050	£64,860

The eSprinter offers additional saving options including:

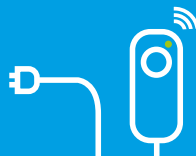
Government OZEV grant of up to £6,000

The eSprinter is eligible for a Government OZEV grant that gives businesses 35% off the purchase price, up to a maximum of £6,000*.



Free Smart Charge Point available**

We'll install a NewMotion Home Fast Smart charge point at your home for smart, safe and convenient charging.



* Vehicle purchase price is calculated on base vehicle only (excluding any optional equipment), it excludes delivery charges and first registration fee. The grant will be applied after any vehicle discount has been offered and includes VAT and number plate costs. For more information, visit: <https://www.gov.uk/plug-in-car-van-grants>

This document is for guidance only and must be used in conjunction with a configuration tool prior to final specification decisions and vehicle quotations being prepared and accepted. List prices are quoted ex-factory unless otherwise stated. Delivery charges excluding VAT will be added to model prices quoted in this document. Prices based on standard finish paint choice. Mercedes-Benz Vans UK and authorised Dealers reserve the right to alter specification and vary prices without notice. The availability of options may depend on the chosen base vehicle and other optional equipment specified, and should be confirmed with your Mercedes-Benz Vans Dealer prior to order placement. VAT is calculated at the standard rate of 20%. Mercedes-Benz Vans UK Ltd, Tongwell, Milton Keynes, MK15 8BA.

The EQ Ready App.

Are you #eReady?

We know that not every business is ready to go electric – but if you want to find out whether it's right for you, the EQ Ready app is here to help. Take a free virtual test drive and analyse your electric driving potential using your current van, with no obligation and no pressure to make the switch.

- Easily simulate electric driving in your current van.
- Analyse your driving distances and behaviours to get a clear picture of your virtual range and the battery capacity you'd need.
- See public charging stations in your area and add private charging points (such as those owned by your employer or family/friends).
- Test your hypothetical battery's consumption at different temperature scenarios, and experiment with load weights for a realistic and detailed assessment.
- Get set up in seconds by downloading the app on Apple or Android now.



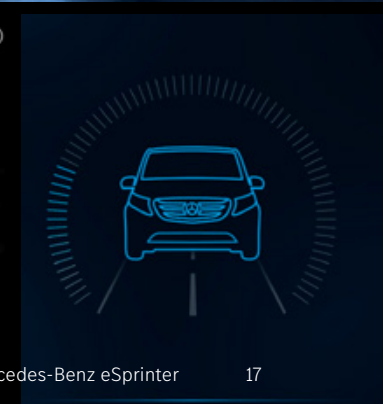
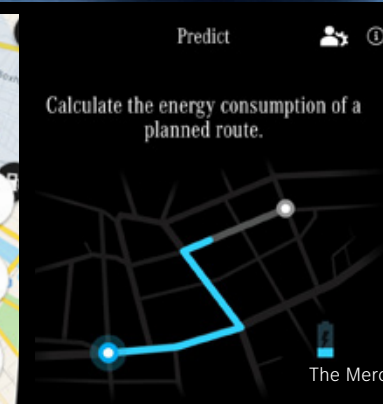
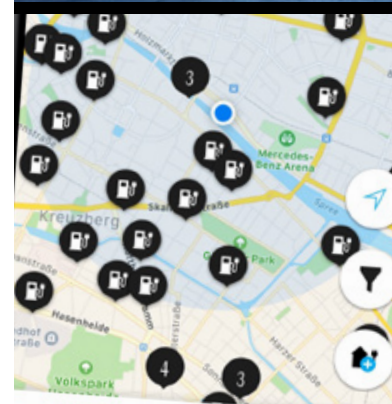
Need further help?

When switching to a brand-new way of keeping your business moving, it's only natural you'll have questions. So, if there's anything you'd like to find out that's not covered in this brochure, then feel free to take a look at:

▶ [The Mercedes-Benz electric van guide](#)

or if you'd preferred to talk to a Dealer, find the nearest one to you:

▶ [Find your preferred Dealer](#)



The Mercedes-Benz eSprinter

After care.

Keeping Businesses Moving.

The support we provide doesn't end once you've driven away. We offer a number of ways to keep your business moving long into the future.

▶ Free roadside assistance

The Mercedes-Benz eSprinter comes with MobiloVan, our comprehensive roadside assistance cover, available for 24/7 for up to 30 years*. If you misfuel, lose your keys, are involved in a road traffic accident, or if your van is vandalised or won't start, we'll send out a trained technician. With an average roadside repair rate of 80%, you'll be moving again in no time.

[Find out more about MobiloVan](#)

▶ 3 year vehicle warranty

Because we want to help keep businesses moving today and in the future, all our new vans come with a free 3 year unlimited mileage warranty.

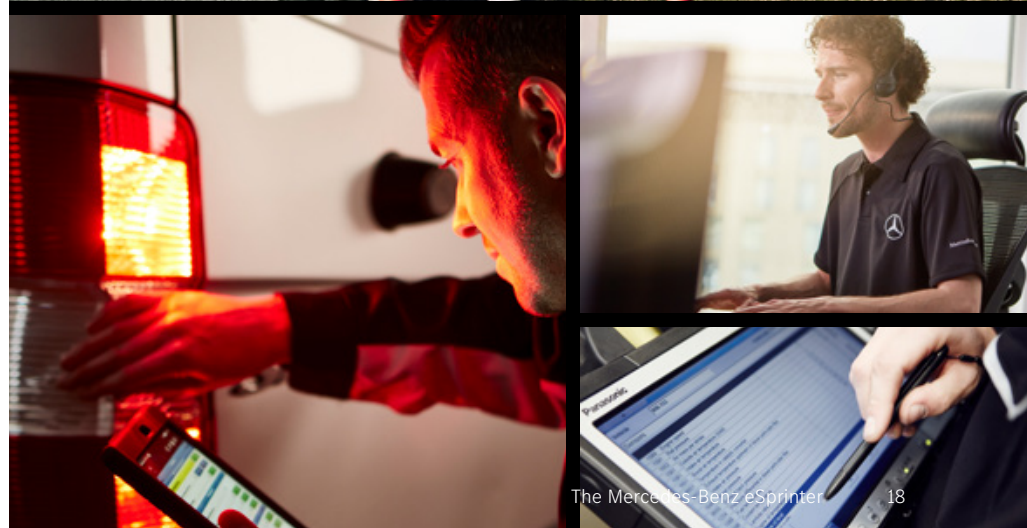
▶ 8-year/160,000km battery guarantee

The eSprinter's battery benefits from an 8-year, 160,000km guarantee, and an expected battery capacity of at least 70% after 8 years – to keep you moving for longer.

▶ 24/7 Dealer network

Our nationwide network of approved Dealers is here to help your business maintain momentum. Most Dealers work until midnight and over a third are open 24/7.

[Find out more about our Dealer network](#)



* Free for 3 years initially and renewed at each service, if serviced by MB according to service intervals for up to 30 years. 60 minutes is the average response rate and may differ. For a full list of exclusions and all product terms please visit mbvans.co.uk/mobilovan