



The Mercedes-Benz Sprinter.

Panel and Crew Van models.

Prices effective from 18 March 2021.

Mercedes-Benz





Contents

> Model overview	3
> Mercedes PRO connect	4
> Trims	
Sprinter PURE	6
Sprinter PROGRESSIVE	7
Sprinter PREMIUM	8
> Colours and Upholstery	9
> MBUX infotainment system	10
> Equipment	11
> Engine and gearbox	30
> Fuel consumption	31
> Weights and payloads	33
> Dimensions	35
> List prices	46
> Approved Used	48
> Finance options	49
> After care	50

Please note

This document provides information about the model range line-up and specifications of the Sprinter. It also contains key details about options, economy and performance of all variants. Details are correct at time of publication and are subject to revision. Any images used in this document may not reflect UK specification and are for illustrative purposes only. Images may show optional equipment which does not form part of UK standard specification.

The Mercedes-Benz Sprinter.



Panel Van – 3 seats



Crew Van (Available as an optional equipment pack) – 6 seats

Available in 2 emission categories:
Euro 6d temp (Light duty)
Euro IV (Heavy duty)

2 van models:



L1



L2



L3



L4

4 lengths:



H1



H2



H3

3 heights:



PURE

(Only available on 214 L1
and L2 FWD Euro 6d temp)



PROGRESSIVE



PREMIUM

3 trims:

Discover more about the other Mercedes-Benz Sprinter models in our range:

[▶ The Sprinter Chassis and Chassis Crewcab](#) [▶ Sprinter Ready to work conversions](#)

With Mercedes PRO connect as standard.

Mercedes PRO connect[†] is the most powerful integrated van monitoring system on the market – and it's included as standard, and free for the first 3 years, in every Sprinter.

It makes communication between drivers and colleagues easier than ever. Job and navigation details can be sent direct to the vehicle's touchscreen and you can monitor the van's performance, location and security status via an app on your phone, tablet and laptop.

› More safety

- **Accident recovery and roadside assistance** summons a MobiloVan technician if required*.
- **MB Emergency Call System automatically calls the emergency services** in the event of a severe accident.

› More security

- **Theft warning alerts and GPS tracking.** Receive alerts straight to your mobile, making it easier to recover lost or missing eVitos.
- **Set geo-fences to define a specific area for the van to operate in** and receive an alert to your mobile devices if it leaves the area.

› More efficiency

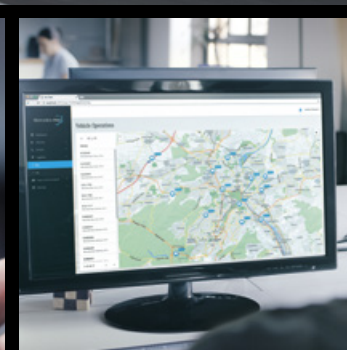
- **Real-time updates on critical parts** – sent to you and your preferred Dealer, encouraging proactive maintenance, repair and servicing.
- **Plan the quickest, most range-efficient journeys** – send route information and updates remotely to drivers, reducing admin time and increasing efficiency.
- **Record trips and see a journey log** to help with mileage claims.
- **Live traffic information** – automatically receive warnings about slippery roads or broken-down vehicles, helping you avoid traffic jams and lengthy tailbacks†.
- **Navigation** – find locations easily using the touchscreen with our geocoded map system and what3words voice navigation†.

› Arrange a demonstration at your nearest Dealership

› Download the Mercedes PRO connect brochure to view all the features



* For a full list of exclusions and all product terms please visit mbvans.co.uk/mobilovan
 † Optionally available with 7inch MBUX screen (E3M) and standard with 10.25inch MBUX screen (E4M).



- › More than 50 services available. All free of charge for 3 years
- › Simple to set up and use on multiple devices
- › Integrates easily with telematics systems.

Mercedes PRO connect packages.

Always Connected Package Free for 3 years

Available on Sprinter models 2018 onwards.

Simplified Fleet Communication	
Fleet Communication	<ul style="list-style-type: none"> Send text messages and navigation data between the driver and vehicle manager Enhance productivity with quick and direct connection to drivers
Internet in the Car	<ul style="list-style-type: none"> Enjoy a reliable internet service from the stable 4G LTE connection onboard Benefit from the vehicle's Wi-Fi hotspot when drivers encounter poor phone reception
Optimised Assistance	
Maintenance & Repair Management	<ul style="list-style-type: none"> Organise servicing and workshop bookings and more with this easy-to-use tool Fewer breakdowns and improved safety because you can take preventative measures Better budgeting of repair work because you know what needs fixing, and when
MB Emergency Call System	<ul style="list-style-type: none"> The vehicle automatically calls the emergency services in the event of severe accidents Increased driver safety and peace of mind if the worst should happen
Accident & Breakdown Management	<ul style="list-style-type: none"> A MobiloVan technician is called out, without you having to contact them, if there's an accident or breakdown Benefit from automatic assistance, meaning there's one less thing to think about
Software Updates	<ul style="list-style-type: none"> Keep your vehicle up-to-date and equipped with the very latest software Extra reassurance that your vehicle is running as it should, with the very best from Mercedes-Benz Vans
Digital Records	
Digital Trip Management	<ul style="list-style-type: none"> Records all of your journeys in digital format Save time creating detailed digitised records and registering all journeys Total visibility of all trips covered so you can optimise them in the future
Digital Driver's Log	<ul style="list-style-type: none"> Records each driver's individual journey and allows them to enter the trip's purpose Easy separation of business and private journeys More accurate reimbursement for business mileage

Efficient Fleet Management	
Vehicle Supervision	<ul style="list-style-type: none"> A real time overview of vehicles' locations and fuel levels Better organisation because you always know the status of your vehicles Quicker assignments and the ability to plan jobs at short notice
Theft Warning	<ul style="list-style-type: none"> Alerts via SMS, email and notifications through the management tool Keep an eye on your vehicles and act fast in the event of a suspected theft Includes geo-fencing to ensure a vehicle doesn't exceed a defined perimeter
Vehicle Operations	<ul style="list-style-type: none"> Remotely manage assignments efficiently and plan routes effectively Save time thanks to real-time updates and reduce admin time
Driving Style Analysis	
Drive Style Analysis	<ul style="list-style-type: none"> View and analyse a driver's performance to see how safe and efficient they are Increase awareness of better driving techniques, so your drivers can put them into practice and become safer on the road Helps improve vehicle reliability because your van's wearing parts ultimately last longer
Eco-Monitor	<ul style="list-style-type: none"> Monitor the fuel consumption of your fleet in real time Better for the environment thanks to lower emissions from more efficient driving Potential for initiating incentives for safer, more fuel-efficient driving
Mobile Vehicle Access	
Remote Control	<ul style="list-style-type: none"> Lock and unlock a van from anywhere using the app to save time and improve safety Easier access to vehicles by several employees without needing a key Better anti-theft protection by making sure all vehicles in a fleet are locked Less hassle to make sure everyone has the right key for the right vehicle Remotely turn on the auxiliary heater (if fitted) to pre-warm the van before you get in

Advanced Navigation Package Free for 3 years

Optionally available with 7inch MBUX screen (E1E) and standard with 10.25inch MBUX screen.

Improved Navigation	
Online Map Update	<ul style="list-style-type: none"> Automatically keeps your map up-to-date with the very latest information Get there faster with the best possible route guidance for the trip Find any point of interest with ease, from coffee shops to depots
Live Traffic Information including Van to X Communication	<ul style="list-style-type: none"> The new Sprinters communicate warnings intelligently wherever a hazard is detected, such as a slippery road or broken-down vehicle Increases the safety of your drivers and other road users Reduces stress for drivers who can avoid traffic jams and lengthy tailbacks
Multimedia Functions	<ul style="list-style-type: none"> A wide range of features from internet radio to weather information, petrol station prices and more Access multimedia functions hands-free with 'Hey Mercedes' Voice Command Operation Improve driver safety by enabling them to keep their hands on the wheel more
Navigation Functions	<ul style="list-style-type: none"> Find locations easily with our geocoded map system and what3words voice navigation Avoid wrong turns thanks to updated map navigation data and locate available parking spaces

The Sprinter PURE.

Panel and Crew Van options available. Features include:

Interior

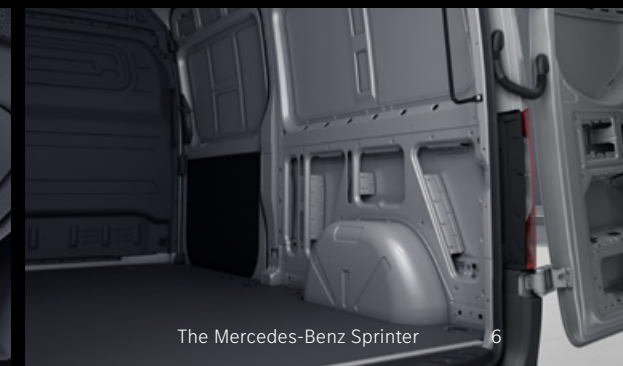
- Comfort overhead control panel
- Dual Passenger seat
- Eco Start/Stop
- Full-width partition
- Multifunction steering wheel
- Plastic floor covering

Exterior

- 270° Double-wing rear-end doors (not available on L1 models)
- Headlight assistant
- Heat-insulating glass

Safety, security and connectivity

- Active Brake ASSIST
- ADAPTIVE ESP*
- ATTENTION ASSIST
- Crosswind ASSIST
- Cruise control
- Double locks
- Integrated connected alarm system
- Keyless start
- MBUX multimedia system with 7-inch touch screen
- USB-C and Bluetooth® interface, WiFi hotspot, Apple CarPlay/Android Auto and a DAB radio



From £27,345*

* Based on a Sprinter 214 CDi Van L1 H1 FWD PURE - Euro 6

- PURE is only available on 214 L1 and L2 FWD Euro 6d temp models.

➤ [Arrange a test drive at your nearest Dealership](#)

The Mercedes-Benz Sprinter 6

Sprinter
PURE

Sprinter
PROGRESSIVE

Sprinter
PREMIUM

MBUX

Equipment

Engine and gearbox

Fuel consumption

Weights and
payloads

Dimensions

List prices

Approved Used
Sprinter

The Sprinter PROGRESSIVE.

Panel and Crew Van options available. Features include:

Interior

- Comfort overhead control panel
- Dual Passenger seat
- Eco Start/Stop
- Full-width partition
- Multifunction steering wheel

Exterior

- 270° Double-wing rear-end doors (not available on L1 models)
- Headlight assistant
- Heat-insulating glass

Safety, security and connectivity

- Active Brake ASSIST
- ADAPTIVE ESP*
- ATTENTION ASSIST
- Crosswind ASSIST
- Cruise control
- Double locks
- Integrated connected alarm system
- Keyless start
- MBUX multimedia system with 7-inch touch screen
- USB-C and Bluetooth® interface, WiFi hotspot, Apple CarPlay/Android Auto and a DAB radio

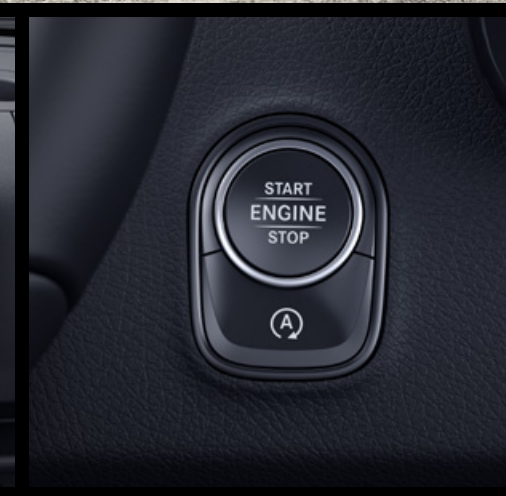


Image shows upgraded wood panelling (VA2)

Additional features included with the PROGRESSIVE:

- Additional USB-C
- Adjustable steering column
- Driver's armrest
- Height and rake steering wheel
- Hinged lid
- Wooden flooring

From £32,625*

* Based on a Sprinter 314 CDi Van L1 H1 FWD PROGRESSIVE – Euro 6

➤ [Arrange a test drive at your nearest Dealership](#)

Sprinter
PURE

Sprinter
PROGRESSIVE

Sprinter
PREMIUM

MBUX

Equipment

Engine and gearbox

Fuel consumption

Weights and
payloads

Dimensions

List prices

Approved Used
Sprinter

The Sprinter PREMIUM.

Panel and Crew Van options available. Features include:

Interior

- Adjustable steering column
- Comfort overhead control panel
- Driver's armrest
- Dual Passenger seat
- Eco Start/Stop
- Full-width partition
- Height and rake steering wheel
- Hinged lid
- Multifunction steering wheel
- Wooden flooring

Exterior

- 270° Double-wing rear-end doors (not available on L1 models)
- Headlight assistant
- Heat-insulating glass

Safety, security and connectivity

- Active Brake ASSIST
- ADAPTIVE ESP*
- Additional USB-C
- ATTENTION ASSIST
- Crosswind ASSIST
- Cruise control
- Double locks
- Integrated connected alarm system
- Keyless start
- MBUX multimedia system with 7-inch touch screen
- USB-C and Bluetooth® interface, WiFi hotspot, Apple CarPlay/Android Auto and a DAB radio



Image shows upgraded alloy wheels



Image shows upgraded MBUX multimedia system with 10.25-inch touch screen (E4M)



Additional features included with the PREMIUM:

- Air conditioning
- Caluma Seat Trim
- Driver's comfort seat
- Full wheel cover†
- Grill frame in body colour
- Parking Package

From £34,685*

* Based on a Sprinter 314 CDi Van L1 H1 FWD PREMIUM – Euro 6

➤ [Arrange a test drive at your nearest Dealership](#)

† Optional on AWD models.

Colours and upholstery.

Solid paints



Arctic White
(Standard for all trims)



Jupiter Red



Steel Blue



Blue Grey



Jet Black

Metallic paints



Cavansite Blue Metallic



Tenorite Grey Metallic



Selenite Grey Metallic

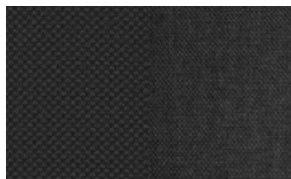


Obsidian Black Metallic

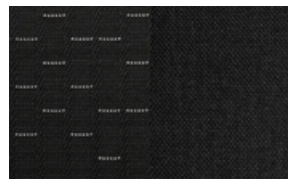


Iridium Silver Metallic

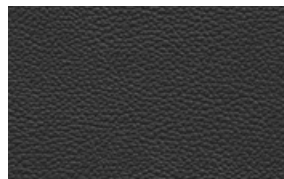
Interior upholstery



Maturin black fabric
(Standard on PURE and PROGRESSIVE)



Caluma black fabric
(Standard on PREMIUM)



Black ARTICO man-made
leather

➤ [For paint pricing, see page 12](#)

➤ [For upholstery pricing, see page 18](#)

MBUX – the Mercedes-Benz User Experience infotainment system.

The state-of-the-art MBUX technology comes with a high resolution 7-inch touchscreen fitted as standard, offering intuitive touch control and enables Mercedes PRO connect services. You can also upgrade to a 10.25-inch display with HD resolution for additional features.

7-inch (standard) features

- The state-of-the-art MBUX technology comes as standard in every Sprinter and offers a wealth of features:
- Works in conjunction with steering wheel touch pads, for quick and easy fingertip access
- Apple CarPlay/Android Auto, a DAB radio and Wi-Fi hotspot*
- Allows text messages and navigation data to be sent between the driver and vehicle manager when the van is stationary to increase productivity and efficiency
- Permanent internet connection to the vehicle, which enables Mercedes PRO connect services. More information about Mercedes PRO connect is [available here](#).

10.25-inch (optional upgrade) additional features

- 'Hey Mercedes', Voice Command Operation
- Fully-integrated navigation system with Live Traffic, Van-to-X Communication and 3D map display with the Mercedes PRO connect Advanced Navigation Package
- What3words – a geocoded map system offering more accurate location services – integrated into the in-van navigation systems. Drivers with compatible models can now say or type in a 3 word address to get directions to a precise 3m x 3m location, anywhere in the world.

► [For more information on optional features, see page 20](#)



* Wi-Fi hotspot requires a separate data contract with Vodafone, which can be purchased through the MBUX head unit.

Equipment (standard and optional overview).

Every Sprinter model comes with a host of standard features, plus a range of optional equipment and packages you can add to enhance your van.

Key: ● Standard ○ Optional — Not available

Equipment	Description	Option code	Front-wheel drive			Rear-wheel drive		All-wheel drive		Basic Price exc. VAT	Basic Price inc. VAT
			PURE	PROGRESSIVE	PREMIUM	PROGRESSIVE	PREMIUM	PROGRESSIVE	PREMIUM		
Exterior Features											
Axle	Front axle with increased load capacity	A50	●	●	●	○	○	○	○	£260.00	£312.00
	Rear axle springs made of glass-fibre-reinforced plastic	C83	○	○	○	○	○	—	—	£240.00	£288.00
Bulkhead	Full-width partition	D50	●	●	●	●	●	●	●	£0.00	£0.00
	Full-width partition wall with 1 window	D51	○	○	○	○	○	○	○	£85.00	£102.00
	Partition wall with sliding door Note: Not available in conjunction with Stowage compartment above roof panelling (FF4) or super-high roof (D05) or paint in vehicle colour (D06). Includes High roof (D03) and co-driver's seat (S91). Seat base for front passenger's seat not provided (S99).	D64	○	○	○	○	○	○	○	£2,125.00	£2,550.00
	Provision for retro-fitting partition	D62	○	○	○	○	○	○	○	£0.00	£0.00
	Omission of partition	D93	○	○	○	○	○	○	○	£0.00	£0.00
Crew Van Pack	Crew Van Pack with Full-width partition wall at C-pillar To update a Panel Van into a Crew Van and includes: - Crew cab floor assy (V40) - Half-height load compartment panelling (VA1) - Front left window, fixed, in sidewall/sliding door (W16) - Front right window fixed in sidewall/sliding door (W17) - Panelling under roof (V36) - Seats passenger compartment, 3-seater bench first row (U65).	N33Z/ D56	—	—	—	○	○	○	○	£2,965.00	£3,558.00
	Crew Van Pack without Full-width partition wall at C-pillar To update a Panel Van into a Crew Van and includes: - Crew cab floor assy (V40) - Half-height load compartment panelling (VA1) - Front left window, fixed, in sidewall/sliding door (W16) - Front right window fixed in side wall/sliding door (W17) - Panelling under roof (V36) - Seats passenger compartment, 3-seater bench first row (U65).	N33Z	—	—	—	○	○	○	○	£1,715.00	£2,058.00
Loading Doors	270° double-wing rear-end doors, opening to side wall Note: Not available for L1 vehicles.	W54	●	●	●	●	●	●	●	£0.00	£0.00
	Electrical operation of sliding door (left side) Includes: Multi-button key (FY7).	T56	—	—	—	○	○	○	○	£685.00	£822.00

Changes to individual option availability and combinations may occur depending on vehicle specification choices and the continuing evolution and adaptation of our product range. These changes may not be immediately reflected in this document as they occur, but will be introduced at the next revision opportunity.

Equipment (standard and optional overview).

Equipment	Description	Option code	Front-wheel drive			Rear-wheel drive		All-wheel drive		Basic Price exc. VAT	Basic Price inc. VAT
			PURE	PROGRESSIVE	PREMIUM	PROGRESSIVE	PREMIUM	PROGRESSIVE	PREMIUM		
Exterior Features (cont.)											
Loading Doors (cont.)	Electrical operation of sliding door (right side) Note: Only available for vehicles with rear-wheel drive. Includes: Sliding door right (T16) and Multi-button key (FY7).	T55	—	—	—	○	○	○	○	£1,250.00	£1,500.00
	Opening limiter for electrically operated sliding door	T60	—	—	—	○	○	○	○	£800.00	£960.00
	Power closing aid sliding door (left side)	T51	○	○	○	○	○	○	○	£250.00	£300.00
	Power closing aid sliding door (right side) Includes: Sliding door right side (T16).	T50	○	○	○	○	○	○	○	£815.00	£978.00
	Sliding door left	T19	●	●	●	●	●	●	●	£0.00	£0.00
	Sliding door right	T16	○	○	○	○	○	○	○	£565.00	£678.00
Exhaust	Exhaust straight to chassis rear	K60	○	○	○	○	○	○	○	£115.00	£138.00
	Exhaust ending laterally behind rear axle	K63	—	—	—	○	○	○	○	£105.00	£126.00
Fuel Tank	50L fuel tank	K11	○	○	○	—	—	—	—	£0.00	£0.00
	65L fuel tank	K12	●	●	●	—	—	—	—	£0.00	£0.00
	71L fuel tank	K13	—	—	—	●	●	—	—	£0.00	£0.00
	92L fuel tank	KB8	○	○	○	—	—	—	—	£265.00	£318.00
	93L fuel tank	KB7	—	—	—	○	○	●	●	£270.00	£324.00
	Diesel filler cap in red	K56	○	○	○	○	○	○	○	£20.00	£24.00
	Fuel filter with water separator	KL5	●	●	●	●	●	●	●	£0.00	£0.00
	Lockable AdBlue filler cap	K53	○	○	○	○	○	○	○	£20.00	£24.00
Mud flaps	Front mud flaps	P47	○	○	○	○	○	○	○	£55.00	£66.00
	Rear mud flaps Note: Standard on 5-Series van	P48	○	○	○	○	○	●	●	£55.00	£66.00
Paint	Chrome-plated radiator grille Includes: Radiator grille frame in vehicle colour (CN2).	FK3	○	○	○	○	○	○	○	£205.00	£246.00
	Painted bumper Only in conjunction with one of the paints: 7755/9197/9538/9775 And in conjunction with the following: Radiator grille frame in vehicle colour (CN2), Blind Spot ASSIST (JA7) and Parking Package with 360-degree camera (JB6)/Parking Package with reversing camera (JB7).	CM0	○	○	○	○	○	○	○	£2,870.00	£3,444.00

● Standard ○ Optional — Not available

Equipment (standard and optional overview).

Equipment	Description	Option code	Front-wheel drive			Rear-wheel drive		All-wheel drive		Basic Price exc. VAT	Basic Price inc. VAT
			PURE	PROGRESSIVE	PREMIUM	PROGRESSIVE	PREMIUM	PROGRESSIVE	PREMIUM		
Exterior Features (cont.)											
Paint (cont.)	Optional colours, solid or metallic finish. For Panel Van	—	○	○	○	○	○	○	○	£685.00	£822.00
	Radiator grille frame in vehicle colour	CN2	○	○	●	○	●	○	●	£95.00	£114.00
Power Take Off	Constant engine speed control Includes: Parameterizable special module (ED5).	M53	—	—	—	○	○	○	○	Currently Unavailable	Currently Unavailable
	Engine front power take-off with bracket for additional alternator	N62	—	—	—	○	○	○	○	£285.00	£342.00
	Engine power take-off at front with carrier for additional refrigerant compressor	N63	—	—	—	○	○	○	○	£285.00	£342.00
	Power take off counter shaft MB, (2c)	N05	—	—	—	○	○	○	○	£915.00	£1,098.00
	Power take off counter shaft MB, (2b)	N07	—	—	—	○	○	○	○	£1,035.00	£1,242.00
	Pre-installation for transmission oil cooler Includes: Power take off counter shaft MB, (2c) (N05) or power take off counter shaft MB, (2b) (N07).	GK4	—	—	—	○	○	○	○	£1,220.00	£1,464.00
	Transmission lock for power take-off Includes: Power take off counter shaft MB, (2c) (N05) or power take off counter shaft MB, (2b) (N07)	N80	—	—	—	○	○	○	○	£1,150.00	£1,380.00
	Variable electronic engine speed control Includes: Parameterizable special module (ED5).	MT4	○	○	○	○	○	○	○	Currently Unavailable	Currently Unavailable
Roof	Low Roof Note: Standard on L1 and L2 FWD and optional on L2 (RWD)	D030	●	●	●	○	○	○	○	-£1,220.00	£0.00
	High Roof Note: Standard on van L2, L3 and L4 RWD	D03	○	○	○	●	●	●	●	£1,220.00	£1,464.00
	Super High Roof L3/L4 Panel Van – painted in MB 9147 arctic white	D05	○	○	○	○	○	○	○	£1,550.00	£1,860.00
	Super High Roof L3/L4 Panel Van – painted in vehicle colour	D06	○	○	○	○	○	○	○	£2,110.00	£2,532.00
Suspension	Suspension packages are available on select models, depending on application and variant. Please consult your local Dealer.										
	Air suspension – run-on module 1 h Note: Only available in conjunction with comfort suspension air suspension (CB2).	C1N	—	—	—	○	○	○	○	£165.00	£198.00
	Air suspension for rescue vehicles Note: Only available in conjunction with comfort suspension air suspension (CB2).	C1R	—	—	—	○	○	○	○	£90.00	£108.00
	Air suspension – pre-installation for control switch in rear Note: Only available in conjunction with comfort suspension air suspension (CB2).	C1V	—	—	—	○	○	○	○	£75.00	£90.00

● Standard ○ Optional — Not available

Equipment (standard and optional overview).

Equipment	Description	Option code	Front-wheel drive			Rear-wheel drive		All-wheel drive		Basic Price exc. VAT	Basic Price inc. VAT
			PURE	PROGRESSIVE	PREMIUM	PROGRESSIVE	PREMIUM	PROGRESSIVE	PREMIUM		
Exterior Features (cont.)											
Suspension (cont.)	Air suspension – actuation, speed signal Note: Only available in conjunction with comfort suspension air suspension (CB2).	C2A	—	—	—	○	○	○	○	£90.00	£108.00
	Air suspension – control switch in rear Note: Only available in conjunction with comfort suspension air suspension (CB2).	C2H	—	—	—	○	○	○	○	£100.00	£120.00
	Air suspension – control switch in instrument panel Note: Only available in conjunction with comfort suspension air suspension (CB2).	C2I	—	—	—	○	○	○	○	£120.00	£144.00
	Air suspension – valve for emergency filling Note: Only available in conjunction with comfort suspension air suspension (CB2).	C2V	—	—	—	○	○	○	○	£115.00	£138.00
	Comfort air suspension	CB2	—	—	—	○	○	○	○	£2,280.00	£2,736.00
	Deletion, vehicle lowering Note: Only available for vehicles in the weight classes 3,000kg and 3,500kg with rear-wheel drive.	CW2	○	○	○	○	○	○	○	£0.00	£0.00
	Longitudinal member reinforcement	Q11	●	●	●	●	●	●	●	£0.00	£0.00
	Reinforced shock absorbers	C47	○	○	○	○	○	○	○	£105.00	£126.00
	Stabilisation level I Note: Not available for weight class 4,100kg with front-wheel drive. Replaces CF2 to CF3 from previous Sprinter.	CB7	●	●	●	●	●	—	—	£0.00	£0.00
	Stabilisation level II Note: replaces CF4 and CF5 from previous Sprinter.	CB8	○	○	○	○	○	—	—	£690.00	£828.00
	Stabilisation, level III Note: intended for motorhome conversions.	CB4	○	○	○	—	—	—	—	£595.00	£714.00
	Suspension for comfort and cargo protection	CB1	○	○	○	○	○	—	—	£320.00	£384.00
Vibration damper	CT1	—	—	—	○	○	○	○	£85.00	£102.00	
Tyres	All-season tyres	RM0	○	○	○	○	○	○	○	£100.00	£120.00
	Mud and slush tyres	RM1	○	○	○	○	○	●	●	£195.00	£234.00
	Resistance-optimised tyres	RR0	●	●	●	●	●	—	—	£0.00	£0.00
	Summer tyres	RM7	●	●	●	●	●	—	—	£0.00	£0.00
	Tyres without name of make	RD9	●	●	●	●	●	●	●	£0.00	£0.00
	Continental tyres	RF1	○	○	○	○	○	○	○	£0.00	£0.00
	Goodyear (90) tyres	RF9	○	○	○	○	○	○	○	£0.00	£0.00

● Standard ○ Optional — Not available

Equipment (standard and optional overview).

Equipment	Description	Option code	Front-wheel drive			Rear-wheel drive		All-wheel drive		Basic Price exc. VAT	Basic Price inc. VAT
			PURE	PROGRESSIVE	PREMIUM	PROGRESSIVE	PREMIUM	PROGRESSIVE	PREMIUM		
Exterior Features (cont.)											
Tyres (cont.)	Michelin (80) tyres	RF8	○	○	○	○	○	○	○	£0.00	£0.00
	Pirelli (50) tyres	RF5	○	○	○	○	○	○	○	£0.00	£0.00
	Tyres 225/65 R16 C	RN5	●	●	●	○	○	○	○	£0.00	£0.00
	Tyres 205/75 R16 C <small>Note: Standard AWD</small>	RG3	—	—	—	—	—	●	●	£0.00	£0.00
	Tyres 225/75 R16 C	RG8	—	—	—	—	—	●	●	£0.00	£0.00
	Tyres 235/65 R16 C	RH2	—	—	—	●	●	○	○	£0.00	£0.00
	Tyres 235/60 R17 C	RH3	—	—	—	○	○	○	○	£0.00	£0.00
	Tyre pressure monitoring systems	RY2	○	○	○	○	○	○	○	£245.00	£294.00
Wheels	Steel wheels in arctic white	RM2	○	○	○	○	○	○	○	£60.00	£72.00
	Steel wheels 6.5 J x 16	RS3	●	●	●	●	●	●	●	£0.00	£0.00
	Full wheel cover	RD8	○	○	●	○	●	○	○	£95.00	£114.00
	Hydraulic Jack	Y43	—	—	—	●	●	●	●	£0.00	£0.00
	Jack	Y36	●	●	●	—	—	—	—	£0.00	£0.00
	Light-alloy wheels 6.5 J x 16	RL5	○	○	○	○	○	○	○	£650.00	£780.00
	Light-alloy wheels, 6.5 J x 16 in black	RM3	○	○	○	—	—	—	—	£755.00	£906.00
	Light-alloy wheels 6.5 J x 17 <small>Includes: Tyres 235/60 R17 C (RH3).</small>	RL7	—	—	—	○	○	○	○	£715.00	£858.00
	Spare wheel	R87	●	●	●	●	●	●	●	£0.00	£0.00
	Omission of spare wheel	R020	○	○	○	—	—	—	—	£-55.00	£-66.00
	Spare wheel bracket below frame end	R65	●	●	●	●	●	●	●	£0.00	£0.00
	Interior Features										
Gearbox	6-speed manual transmission	GE9	●	●	●	—	—	—	—	£0.00	£0.00
	ECO Gear 360 6-speed manual transmission	GD8	—	—	—	●	●	—	—	£0.00	£0.00
	7G-TRONIC automatic gearbox (RWD Euro VI engines only)	G42	—	—	—	○	○	●	●	£1,930.00	£2,316.00
	9G-TRONIC automatic gearbox (RWD Euro 6 engines only)	G43	—	—	—	○	○	○	○	£1,970.00	£2,364.00
	9G-TRONIC automatic gearbox (FWD)	GK8	○	○	○	—	—	—	—	£1,930.00	£2,316.00

● Standard ○ Optional — Not available

Equipment (standard and optional overview).

Equipment	Description	Option code	Front-wheel drive			Rear-wheel drive		All-wheel drive		Basic Price exc. VAT	Basic Price inc. VAT
			PURE	PROGRESSIVE	PREMIUM	PROGRESSIVE	PREMIUM	PROGRESSIVE	PREMIUM		
Interior Features (cont.)											
Grab Handles	Entrance handle on left-hand rear corner pillar	T85	○	○	○	○	○	○	○	£40.00	£48.00
	Entrance handle on right-hand rear corner pillar	T86	●	●	●	●	●	●	●	£0.00	£0.00
	Grab handles for driver's and co-driver's doors	T75	○	○	○	○	○	●	●	£65.00	£78.00
	Grab handle, load compartment sliding door at partition	T77	●	●	●	●	●	●	●	£0.00	£0.00
	Grab handle for inner seat, two-seater	S78	○	○	○	○	○	○	○	£45.00	£54.00
	Handle for entrance	T74	○	○	○	○	○	○	○	£40.00	£48.00
Heating and Ventilation	Auxiliary heat exchanger at the rear Includes: Heater booster system (HZ9) and deletion of sliding door (T93).	H13	○	○	○	○	○	○	○	£1,040.00	£1,248.00
	Auxiliary hot-air heater	H11	—	—	—	○	○	○	○	£1,295.00	£1,554.00
	Electric hot-air auxiliary heater	HH2	○	○	○	○	○	○	○	£180.00	£216.00
	Electric roof fan, vents load compartment	H72	○	○	○	○	○	○	○	£450.00	£540.00
	Heater booster system	HZ9	○	○	○	○	○	○	○	£485.00	£582.00
	Heating duct to passenger compartment	H00	—	—	—	○	○	○	○	£55.00	£66.00
	Hot-water auxiliary heater	H12	○	○	○	○	○	○	○	£625.00	£750.00
	Pre-installation for additional heat exchanger Includes: Sliding door (T93) and Hot-water auxiliary heater (H12).	H88	○	○	○	○	○	○	○	£800.00	£960.00
	Radio remote control for hot-water auxiliary heater Includes: Hot-water auxiliary heater (H12).	HY1	○	○	○	○	○	○	○	£870.00	£1,044.00
	Roof-mounted air conditioning system, reinforced	H08	○	○	○	○	○	○	○	£3,620.00	£4,344.00
	Roof-mounted climate control system Note: Only available with climate control system and RWD. Includes: Omission partition (D93), Alternator 14 V/250 A (M60) and TEMPOMATIC semi-automatic climate control system (HH9).	HH7	○	○	○	○	○	○	○	£2,720.00	£3,264.00
	THERMOTRONIC automatic climate control system Includes: Rain sensor (JF1).	HH4	○	○	○	○	○	○	○	£2,105.00	£2,526.00
	TEMPOMATIC semi-automatic climate control system	HH9	—	—	—	○	●	○	●	£1,000.00	£1,200.00
	TEMPOMATIC semi-automatic climate control system Includes: FWD includes Alternator 14V/230A (M48).	HH9	○	○	●	—	—	—	—	£1,155.00	£1,386.00
	Thermally insulated load/passenger compartment	H01	○	○	○	○	○	○	○	£295.00	£354.00
Ventilation system with filter	H81	○	○	○	○	○	○	○	£75.00	£90.00	

● Standard ○ Optional — Not available

Equipment (standard and optional overview).

Equipment	Description	Option code	Front-wheel drive			Rear-wheel drive		All-wheel drive		Basic Price exc. VAT	Basic Price inc. VAT
			PURE	PROGRESSIVE	PREMIUM	PROGRESSIVE	PREMIUM	PROGRESSIVE	PREMIUM		
Interior Features (cont.)											
Seating	Armrest for driver's seat	S22	○	●	●	●	●	●	●	£50.00	£60.00
	Armrest for co-driver's seat	S25	○	○	○	○	○	○	○	£45.00	£54.00
	Armrest, driver's and co-driver's door	S28	○	○	○	○	○	○	○	£35.00	£42.00
	Adjustable co-driver's seat	S04	○	○	○	○	○	○	○	£0.00	£0.00
	Comfort driver's seat	SB1	○	○	●	○	●	○	●	£110.00	£132.00
	Comfort co-driver's seat	SB2	○	○	○	○	○	○	○	£110.00	£132.00
	Convenience head restraint, driver's seat	SK0	○	○	○	○	○	○	○	£60.00	£72.00
	Convenience head restraint, co-driver's seat	SK1	○	○	○	○	○	○	○	£60.00	£72.00
	Co-driver's double seat	S23	●	●	●	●	●	●	●	£0.00	£0.00
	Deletion of co-driver seat, seatbox and seatbelt system	S91, S99, SW1	○	○	○	○	○	○	○	£0.00	£0.00
	Deletion of passenger compartment seats, if crew cab	S92	—	—	—	—	—	—	—	-£90.00	-£108.00
	Driver's seat	S02	●	●	○	●	○	●	○	£0.00	£0.00
	Driver's seat plus	SB9	○	○	○	○	○	○	○	£25.00	£30.00
	Driver's seat electrically adjustable Includes: Lumbar support, driver's seat (SE5), Caluma black fabric (VF4) and Heated seat for driver (H16).	SF1	○	○	○	○	○	○	○	£1,155.00	£1,386.00
	Co-driver's seat electrically adjustable Includes: Seat heating for co-driver (H15) and Heated driver's seat electrically adjustable (SF1).	SF2	○	○	○	○	○	○	○	£2,250.00	£2,700.00
	Heated seat for driver	H16	○	○	○	○	○	○	○	£155.00	£186.00
	Seat heating for co-driver Includes: Heated seat for driver (H16).	H15	○	○	○	○	○	○	○	£310.00	£372.00
	Lumbar support, driver's seat Includes: Comfort driver's seat (SB1).	SE5	○	○	○	○	○	○	○	£65.00	£78.00
Lumbar support, co-driver's seat Includes: Comfort co-driver's seat (SB2).	SE4	○	○	○	○	○	○	○	£175.00	£210.00	
Re-enforced seat base	S86	—	—	—	—	—	—	—	£105.00	£126.00	
Seat belts orange, driver and co-driver	S62	○	○	○	○	○	○	○	£35.00	£42.00	

● Standard ○ Optional — Not available

Equipment (standard and optional overview).

Equipment	Description	Option code	Front-wheel drive			Rear-wheel drive		All-wheel drive		Basic Price exc. VAT	Basic Price inc. VAT
			PURE	PROGRESSIVE	PREMIUM	PROGRESSIVE	PREMIUM	PROGRESSIVE	PREMIUM		
Interior Features (cont.)											
Seating (cont.)	Suspension seat, comfort version, driver's seat Note: Only available in conjunction with Driver's seat frame, low (S87).	SB3	○	○	○	○	○	○	○	£385.00	£462.00
	Suspension seat, comfort version, co-driver's seat Note: Only available in conjunction with Driver's seat frame, low (S87).	SB4	○	○	○	○	○	○	○	£385.00	£462.00
Trim	Seat trim upholstery - ARTICO man-made leather, black	VF6	○	○	○	○	○	○	○	From £55.00 depending on variant	
	Seat trim upholstery - Maturin black fabric	VF7	●	●	○	●	○	●	○	£0.00	£0.00
	Seat trim upholstery - Caluma black fabric	VF4	○	○	●	○	●	○	●	From £55.00 depending on variant	
Panelling	Luxury interior panelling Includes: Stowage compartment with net in rear doors (VA7) and Windows in liftgate/hinged rear-end doors (W61).	V21	—	—	—	○	○	○	○	£750.00	£900.00
	Window pillar panelling Includes: - Back pane heatable (H22) - Roof-mounted air conditioning system, basic (HH7) - Air conditioning, semi-automatically controlled, TEMPOMATIC (HH9) - Alternator 14 V/250 A (M60) - Range of parts, roof lining for bodybuilders (V08) - Panelling in load compartment up to belt rail standard (VA1) - Stowage compartment with net in rear doors (VA7) - Window front left, fixed, in sidewall/sliding door (W16) - Front right window fixed in side wall/sliding door (W17) - Fixed window at rear right (W28) - Fixed window, rear left (W27) - Window in tailgate/rear door with wipe/wash system (W78).	V31	—	—	—	○	○	○	○	From £4,980.00	
Steering wheel	Leather steering wheel and leather gearshift lever	CL2	○	○	○	○	○	○	○	£200.00	£240.00
	Leather steering wheel Note: For automatics only Includes: 7G-TRONIC PLUS (G42) and HOLD function (BH1).	CL3	○	○	○	○	○	○	○	£1,675.00	£2,010.00
	Multifunction steering wheel	C6L	●	●	●	●	●	●	●	£0.00	£0.00
	Steering wheel adjustable for height and tilt	CL1	○	●	●	●	●	●	●	£0.00	£0.00

● Standard ○ Optional — Not available

Equipment (standard and optional overview).

Equipment	Description	Option code	Front-wheel drive			Rear-wheel drive		All-wheel drive		Basic Price exc. VAT	Basic Price inc. VAT
			PURE	PROGRESSIVE	PREMIUM	PROGRESSIVE	PREMIUM	PROGRESSIVE	PREMIUM		
Interior Features (cont.)											
Storage	Coat hook in cab	F1K	○	○	○	○	○	○	○	£20.00	£24.00
	Cup holders front - x4	FG8	○	○	○	○	○	○	○	£0.00	£0.00
	Cup holder in passenger compartment	FF3	—	—	—	○	○	○	○	£75.00	£90.00
	Hinged lid for centre stowage compartment	FJ1	○	●	●	●	●	●	●	£0.00	£0.00
	Hinged lid for stowage compartments left and right	FJ5	○	○	○	○	○	○	○	£95.00	£114.00
	Mounting rails for roof rack	D13	○	○	○	○	○	○	○	£170.00	£204.00
	Omission of shelf above windscreen	FW6	—	—	—	○	○	○	○	£0.00	£0.00
	Omission of stowage compartment under cockpit	F3W	—	—	—	○	○	○	○	£0.00	£0.00
	Pre-installation for switch panel	E3J	●	●	●	●	●	●	●	£0.00	£0.00
	Shelf above windscreen	FF5	●	●	●	●	●	●	●	£0.00	£0.00
	Single-size slot at front under roof liner	FF8	○	○	○	○	○	○	○	£65.00	£78.00
	Stowage compartment above roof panelling <small>Note: Only available for the Sprinter panel van with high roof (D03) or super-high roof (D05) and paint in vehicle colour (D06).</small>	FF4	○	○	○	○	○	○	○	£150.00	£180.00
	Stowage compartment underneath cockpit	FJ4	●	●	●	●	●	●	●	£0.00	£0.00
Stowage net on driver's seat backrest	SZ7	○	○	○	○	○	○	○	£45.00	£54.00	
Stowage net on co-driver's seat backrest	SZ8	○	○	○	○	○	○	○	£45.00	£54.00	
Technology Software and Electrics											
Alternators	Alternator 14 V/175 A	—	●	●	—	—	—	—	—	£0.00	£0.00
	Alternator 14 V/180 A	M49	—	—	—	●	●	●	●	£0.00	£0.00
	Alternator 14 V/200 A	M40	—	—	—	○	○	○	○	£0.00	£0.00
	Alternator 14 V/230 A	M48	○	○	●	—	—	—	—	£460.00	£552.00
	Alternator 14 V/250 A	M60	—	—	—	○	○	○	○	£460.00	£552.00
Audio Entertainment	Communication module (LTE) for digital services <small>Transfers data particularly rapidly and reliably with its permanently installed SIM card, creating the technical conditions for using the Mercedes PRO connect services.</small>	JH3	●	●	●	●	●	●	●	£0.00	£0.00
	Digital Radio (DAB)	E1D	●	●	●	●	●	●	●	£0.00	£0.00

● Standard ○ Optional — Not available

Equipment (standard and optional overview).

Equipment	Description	Option code	Front-wheel drive			Rear-wheel drive		All-wheel drive		Basic Price exc. VAT	Basic Price inc. VAT
			PURE	PROGRESSIVE	PREMIUM	PROGRESSIVE	PREMIUM	PROGRESSIVE	PREMIUM		
Technology Software and Electrics (cont.)											
Audio Entertainment (cont.)	MBUX multimedia system with 7-inch touch screen The MBUX multimedia system with 17.8 cm (7-inch) touchscreen boasts intuitive touchscreen operation, a high-resolution touchscreen and a wealth of communication and infotainment features.	E3M	●	●	●	●	●	●	●	£0.00	£0.00
	MBUX multimedia system with 10.25-inch touch screen Features of the MBUX multimedia system with high-resolution 26 cm (10.25-inch) touchscreen include fast hard-disc navigation with 3-D map display and smartphone integration.	E4M	○	○	○	○	○	○	○	£1,810.00	£2,172.00
	Navigation Includes: 3 years of free map updates (EX9), Digital Owner's Manual (X05) and Live Traffic capability (E1G).	E1E	○	○	○	○	○	○	○	£690.00	£828.00
Battery	AGM battery, 12 V 70 Ah	ED1	○	○	○	○	○	○	○	£0.00	£0.00
	Auxiliary battery retrofit consumers vehicle interior Includes: Cut-off relay for auxiliary battery (E36).	E2I	○	○	○	○	○	○	○	£330.00	£396.00
	Auxiliary battery for retrofit consumer's engine compartment	E2M	—	—	—	○	○	○	○	£235.00	£282.00
	Battery master switch, single-pin	E30	○	○	○	○	○	○	○	£105.00	£126.00
	Cut-off relay for auxiliary battery	E36	○	○	○	○	○	○	○	£95.00	£114.00
	Engine run-on system (Note exemption may be required).	MW1	○	○	○	○	○	○	○	£810.00	£972.00
	Heavy-duty battery (12v 92 aH)	ED4	●	●	●	●	●	●	●	£0.00	£0.00
	Jump start contact	ES0	●	●	●	●	●	●	●	£0.00	£0.00
Electronics	12 V socket in the boot/load compartment	ES2	○	○	○	○	○	○	○	£50.00	£60.00
	Charging package, dashboard (Two 5v USB-C sockets and 12v socket)	ES5	○	○	○	○	○	○	○	£65.00	£78.00
	Extension of Programmable System Module (PSM) standard contact (Additional connection options for body manufacturers).	E5M	○	○	○	○	○	○	○	£60.00	£72.00
	Parameterizable special module	ED5	○	○	○	○	○	●	●	£285.00	£342.00
	Plug socket in cab	E46	○	○	○	○	○	○	○	£45.00	£54.00
	Pre-installation for 3-way tipper	P57	—	—	—	—	—	—	—	£950.00	£1,140.00
	Pre-wiring for parameterizable special module (PSM)	ED8	●	●	●	●	●	●	●	£0.00	£0.00
	Smartphone cradle	E1I	○	○	○	○	○	○	○	£70.00	£84.00
Terminal strip for electrical connection	EK1	●	●	●	●	●	●	●	£0.00	£0.00	

● Standard ○ Optional — Not available

The Mercedes-Benz Sprinter

20

Sprinter
PURE

Sprinter
PROGRESSIVE

Sprinter
PREMIUM

MBUX

Equipment

Engine and gearbox

Fuel consumption

Weights and
payloads

Dimensions

List prices

Approved Used
Sprinter

Equipment (standard and optional overview).

Equipment	Description	Option code	Front-wheel drive			Rear-wheel drive		All-wheel drive		Basic Price exc. VAT	Basic Price inc. VAT
			PURE	PROGRESSIVE	PREMIUM	PROGRESSIVE	PREMIUM	PROGRESSIVE	PREMIUM		
Technology Software and Electrics (cont.)											
Electronics (cont.)	Tray for smartphones Includes: Wireless charging.	E1B	○	○	○	○	○	○	○	£1,140.00	£1,368.00
	USB-C socket, 5 V	E1U	○	●	●	●	●	●	●	£0.00	£0.00
Keys	2 additional master keys	FZ9	○	○	○	○	○	○	○	£110.00	£132.00
	Multi-button key	FY7	○	○	○	○	○	○	○	£30.00	£36.00
Tachograph	Controls for tachograph at front under roof liner standard over 3.5T Note: Only in conjunction with Tachograph pre-installation kit (JV6).	H1B	●	●	●	●	●	●	●	£275.00	£330.00
	EU Intelligent tachograph pre-installation kit	JV6	○	○	○	○	○	○	○	£275.00	£330.00
	EU Intelligent tachograph Std over 3.5T	JD6	○	○	○	○	○	○	○	£735.00	£882.00
	Omission tachograph Includes: Linear speed limiter 90 km/h EG (MD4), Qualification N2 (Z2N), Weight variant 3,550 kg (XG4) and Lane Keeping ASSIST (JW5).	J92	○	○	○	○	○	○	○	£0.00	£0.00
	Tachograph 1 day/2 drivers, automatic (EC)	J19	○	○	○	○	○	○	○	£690.00	£828.00
	Tachograph control under dashboard, co-driver side	J2B	○	○	○	○	○	○	○	£0.00	£0.00
Driver's Assistance and Safety Equipment											
Airbags	Airbag driver's seat	SA5	●	●	●	●	●	●	●	£0.00	£0.00
	Airbag co-driver's seat Includes: Seatbelt reminder for co-driver's seat.	SA6	○	○	○	○	○	○	○	£415.00	£498.00
	Thorax/pelvis/side airbag for driver Includes: Front airbag co-driver (SA6) and Seat belt reminder (J55).	SH1	○	○	○	○	○	○	○	£755.00	£906.00
	Thorax/pelvis/side airbag for co-driver Includes: Thorax/pelvis/side airbag for driver (SH1), Front airbag co-driver (SA6) and Seat belt reminder (J55).	SH2	○	○	○	○	○	○	○	£990.00	£1,188.00
	Window airbags for driver and co-driver	SH9	○	○	○	○	○	○	○	£575.00	£690.00
Brake	Active Brake ASSIST Active Brake ASSIST can help to prevent accidents with vehicles ahead and crossing pedestrians or to mitigate their consequences.	BA3	●	●	●	●	●	●	●	£0.00	£0.00
	Adaptive brake light	LE1	●	●	●	●	●	●	●	£0.00	£0.00
	Electrical parking brake	B25	○	○	○	○	○	○	○	£270.00	£324.00
	Folding handbrake lever	BE2	○	○	○	○	○	○	○	£55.00	£66.00

● Standard ○ Optional — Not available

Equipment (standard and optional overview).

Equipment	Description	Option code	Front-wheel drive			Rear-wheel drive		All-wheel drive		Basic Price exc. VAT	Basic Price inc. VAT
			PURE	PROGRESSIVE	PREMIUM	PROGRESSIVE	PREMIUM	PROGRESSIVE	PREMIUM		
Driver's Assistance and Safety Equipment (cont.)											
Brake (cont.)	Hill-Start ASSIST Hill-Start ASSIST works by sensing the van is on an incline and holding the brakes for a few seconds – even after the handbrake has been released – until the clutch's biting point has been found and the van begins to move forwards.	E07	●	●	●	●	●	●	●	£0.00	£0.00
	HOLD function (Braking assistance on downhill stretches and at a traffic light stop) Only in conjunction with: 7G-TRONIC automatic gearbox (G42) or 9G-TRONIC automatic gearbox (GK8).	BH1	○	○	○	○	○	○	○	£0.00	£0.00
	Wheel chock Note: Standard on over 3.5T.	Y26	○	○	○	○	○	○	○	£45.00	£54.00
Driver's Assistance	Active Distance ASSIST DISTRONIC Includes: Leather steering wheel (CL3), Instrument cluster with colour display (JK5), 7G-TRONIC (G42) and HOLD function (BH1).	ET4	○	○	○	○	○	○	○	£2,610.00	£3,132.00
	Active Lane Keeping ASSIST Active Lane Keeping ASSIST can help to detect when the vehicle is unintentionally departing its lane, warn the driver and, if necessary, actively help to return the vehicle to its lane by means of braking interventions.	JB4	○	○	○	○	○	○	○	£410.00	£492.00
	ATTENTION ASSIST The ATTENTION ASSIST drowsiness detection system can recognise early signs of fatigue on long routes and night-time drives, and prompt the driver to take a break from driving.	JW8	●	●	●	●	●	●	●	£0.00	£0.00
	Blind Spot ASSIST Blind Spot ASSIST can help prevent accidents when changing lanes, for example on the motorway. Includes: Electrically foldable exterior mirrors (F64) and Exterior mirror heated and electrically adjustable (F68)	JA7	○	○	○	○	○	○	○	£640.00	£768.00
	Comfort overhead control panel LED interior lighting including cab downlighting and co-/driver reading lamps; also includes a convenient spectacles compartment.	LC4	●	●	●	●	●	●	●	£0.00	£0.00
	Crosswind ASSIST Crosswind ASSIST detects track offset caused by strong crosswind gusts in due time and helps the driver to stay in lane.	JA8	●	●	●	●	●	●	●	£0.00	£0.00
	Cruise control Includes speed limiter function. Operated via a lever ergonomically positioned on the left of the steering column.	MS1	●	●	●	●	●	●	●	£0.00	£0.00
	Fire extinguisher	Y16	○	○	○	○	○	○	○	£105.00	£126.00
First aid kit	Y10	○	○	○	○	○	○	○	£25.00	£30.00	

● Standard ○ Optional – Not available

Equipment (standard and optional overview).

Equipment	Description	Option code	Front-wheel drive			Rear-wheel drive		All-wheel drive		Basic Price exc. VAT	Basic Price inc. VAT
			PURE	PROGRESSIVE	PREMIUM	PROGRESSIVE	PREMIUM	PROGRESSIVE	PREMIUM		
Driver's Assistance and Safety Equipment (cont.)											
Driver's Assistance (cont.)	Lane Keeping ASSIST Lane Keeping ASSIST can help prevent accidents caused by unintentional lane departures with visual, audible and tactile signals.	JW5	○	○	○	○	○	○	○	£340.00	£408.00
	Rain sensor The rain sensor automatically regulates the wiping frequency of the windscreen wipers with activated intermittent wiping, which makes things easier for the driver.	JF1	○	○	○	○	○	○	○	£105.00	£126.00
	Traffic Sign ASSIST Includes: 3 years of free map updates (EX9), Digital Owner's Manual (XO5), Instrument cluster with colour display (JK5), Navigation (E1E) and Live Traffic capability (E1G).	JA9	○	○	○	○	○	○	○	£1,105.00	£1,326.00
	Warning triangle	Y44	○	○	○	○	○	○	○	£25.00	£30.00
	WET WIPER system. The WET WIPER SYSTEM windscreen wiper system offers the driver an improved view already during the wiping process. Includes: Rain sensor (JF1).	FM3	○	○	○	○	○	○	○	£105.00	£126.00
Parking	Parking package with reversing camera The Parking Package with reversing camera (FR8) and integral Parking ASSIST comprehensively relieves the driver with a better overview to the rear when parking and manoeuvring.	JB7	○	○	●	○	●	○	●	£905.00	£1,086.00
	Parking package with 360° camera Provides comprehensive support when parking and manoeuvring, thereby enhancing safety and comfort. Includes: Electrically foldable exterior mirrors (F64) and Exterior mirror heated and electrically adjustable (F68).	JB6	○	○	○	○	○	○	○	£1,445.00	£1,734.00
	Reversing camera	FR8	○	○	○	○	○	○	○	£455.00	£546.00
	Reversing warning device Includes: Switch-off (JW3)	JW0	○	○	○	○	○	○	○	£210.00	£252.00
Road speed limiters	Linear speed limiter 90 km/h Note: Standard on vehicles over 3.5t	MD4	○	○	○	○	○	○	○	£70.00	£84.00
	Linear speed limiter 100 km/h	MD5	○	○	○	○	○	○	○	£70.00	£84.00
	Linear speed limiter 120 km/h	MD3	○	○	○	○	○	○	○	£70.00	£84.00
	Speed limiter 110 km/h	MK0	○	○	○	○	○	○	○	£130.00	£156.00
	Speed limiter 130 km/h	MK2	○	○	○	○	○	○	○	£130.00	£156.00
Safety	Breakdown management	EY6	●	●	●	●	●	●	●	£0.00	£0.00
	Deactivation of bulb failure indicator	JW2	○	○	○	○	○	○	○	£0.00	£0.00

● Standard ○ Optional — Not available

Equipment (standard and optional overview).

Equipment	Description	Option code	Front-wheel drive			Rear-wheel drive		All-wheel drive		Basic Price exc. VAT	Basic Price inc. VAT
			PURE	PROGRESSIVE	PREMIUM	PROGRESSIVE	PREMIUM	PROGRESSIVE	PREMIUM		
Driver's Assistance and Safety Equipment (cont.)											
Safety (cont.)	ECO start/stop function Note: Not available in conjunction with AWD or 314 RWD Chassis Includes: Alternator 14 V/200 A (M40) on RWD.	MJ8	●	●	●	●	●	—	—	£0.00	£0.00
	Incorrect fuelling protection system	K51	○	○	○	○	○	○	○	£50.00	£60.00
	Live Traffic capability Note: Only available in conjunction with navigation.	E1G	○	○	○	○	○	○	○	£0.00	£0.00
	Mercedes-Benz Emergency Call System	EY5	●	●	●	●	●	●	●	£0.00	£0.00
	Outside temperature indicator	J65	●	●	●	●	●	●	●	£0.00	£0.00
	Seat belt reminder for co-driver seat	J55	○	○	○	○	○	○	○	£95.00	£114.00
	Seat belt warning for driver's seat	J58	●	●	●	●	●	●	●	£0.00	£0.00
Security	Anti-theft Alarm Alarm protection for vehicle and cargo.	FY1	●	●	●	●	●	●	●	£0.00	£0.00
	Double locks	FY2	●	●	●	●	●	●	●	£0.00	£0.00
	VIN visible from outside	XC8	●	●	●	●	●	●	●	£0.00	£0.00
Lighting											
Lighting	3rd brake light	LB5	●	●	●	●	●	●	●	£0.00	£0.00
	Courtesy lights The exit lights at the front doors and sliding doors improve comfort and safety when getting in and out – both for driver and co-driver as well as for the passengers in the passenger compartment.	LB9	○	○	○	○	○	○	○	£70.00	£84.00
	Direction indicators on the front wings Includes: Exterior mirrors without indicators (FU5).	L44	○	○	○	○	○	●	●	£95.00	£114.00
	Extra indicator lamps, flat, on the roof at the rear	LB3	○	○	○	○	○	○	○	£115.00	£138.00
	Fog lamps with cornering light function	L13	○	○	○	○	○	○	○	£200.00	£240.00
	Headlight assistant The automatic headlamps automatically switch the headlights on and off depending on the current light conditions.	LA2	●	●	●	●	●	●	●	£0.00	£0.00
	Highbeam ASSIST Highbeam ASSIST automatically switches the main beams on and off in line with the traffic situation and thereby relieves the driver of manually switching back and forth between main beams and dipped beams.	LA1	○	○	○	○	○	○	○	£265.00	£318.00

● Standard ○ Optional — Not available

Equipment (standard and optional overview).

Equipment	Description	Option code	Front-wheel drive			Rear-wheel drive		All-wheel drive		Basic Price exc. VAT	Basic Price inc. VAT
			PURE	PROGRESSIVE	PREMIUM	PROGRESSIVE	PREMIUM	PROGRESSIVE	PREMIUM		
Lighting (cont.)											
Lighting (cont.)	Interior courtesy light door operated	L65	●	●	●	●	●	●	●	£0.00	£0.00
	LED high performance headlamps Includes: Tail lamps with partial LED technology (L22).	LG7	○	○	○	○	○	—	—	£1,470.00	£1,764.00
	LED light strip in load compartment	LC2	○	○	○	○	○	○	○	£250.00	£300.00
	Lights for left hand traffic	L10	●	●	●	●	●	●	●	£0.00	£0.00
	Load compartment lighting with motion sensor	L71	○	○	○	○	○	○	○	£85.00	£102.00
	Preparation for side marker lights	LB2	—	—	—	—	—	—	—	£0.00	£0.00
	Omission parking lamp	L94	○	○	○	○	○	○	○	£0.00	£0.00
	Side marker lights Note: Standard on L2 upwards.	LB1	—	—	—	●	●	●	●	£0.00	£0.00
	Tail lamps with partial LED technology Note: Only available as part of the LED High Performance headlamps (LG7).	L22	○	○	○	○	○	—	—	£1,470.00	£1,764.00
Tail light wiring harness, extended	L76	—	—	—	—	—	—	—	£75.00	£90.00	
Loading and Towing											
Gross Vehicle Weight (GVW)	Weight variant 2,800kg XG6 is available as a downrated payload variant for vehicles of the weight classes 3,000kg and 3,500kg.	XG6	○	○	○	—	—	—	—	£0.00	£0.00
	Weight variant 3,500kg Weight variant X16 is available as a downrated payload variant for vehicles of the weight class 5,000kg.	X16	—	—	—	○	○	○	○	£0.00	£0.00
	Weight variant 3,550kg XG4 is available as a uprated payload variant for vehicles of the weight class 3,500kg.	XG4	○	○	○	○	○	○	○	£0.00	£0.00
	Higher weight 3,880kg XL8 is available as a downrated payload variant for vehicles of the weight class 4,100kg.	XL8	○	○	○	○	○	○	○	£0.00	£0.00
	Weight variant 4,100kg Note: Standard on 4 series.	XL2	○	○	○	○	○	○	○	£0.00	£0.00
	Weight variant 4,250kg Weight variant XG5 is available as a downrated payload variant for vehicles of the weight class 5,000kg.	XG5	—	—	—	○	○	○	○	£0.00	£0.00

● Standard ○ Optional — Not available

Equipment (standard and optional overview).

Equipment	Description	Option code	Front-wheel drive			Rear-wheel drive		All-wheel drive		Basic Price exc. VAT	Basic Price inc. VAT
			PURE	PROGRESSIVE	PREMIUM	PROGRESSIVE	PREMIUM	PROGRESSIVE	PREMIUM		
Loading and Towing (cont.)											
Gross Vehicle Weight (GVW) (cont.)	Weight variant 5,030kg XL6 is available as a uprated payload variant for vehicles of the weight class 5,000kg.	XL6	—	—	—	○	○	○	○	£0.00	£0.00
	Weight variant 5,500kg The speed is limited to 90km/h, trailer operations are only possible in conjunction with the optional retarder. Includes: Make of tyres – Continental (RF1), Tyres 205/75 R16 C (RG3), Make of tyres as optional extra (RM9) and Front axle with upgraded axle load (A50).	XL4	—	—	—	○	○	○	○	£1,630.00	£1,956.00
Load Area	Aluminium protective entrance strip for floor covering	VC5	○	○	○	○	○	○	○	£640.00	£768.00
	Cable duct on side wall	V94	○	○	○	○	○	○	○	£30.00	£36.00
	Cable duct on rear portal	V95	○	○	○	○	○	○	○	£30.00	£36.00
	Half height load compartment panelling	V25	○	○	○	○	○	○	○	£165.00	£198.00
	Half-height load compartment panelling Includes: Stowage compartment with net in rear doors (VA7) and Windows in liftgate/hinged rear-end doors (W61).	VA1	—	—	—	○	○	○	○	£750.00	£900.00
	Load space interior trim up to roof (plastic)	VA3	○	○	○	○	○	○	○	£295.00	£354.00
	Load space interior trim up to roof (wood)	VA2	○	○	○	○	○	○	○	£295.00	£354.00
	Omission wooden floor	V010	○	○	○	○	○	○	○	£0.00	£0.00
	Plastic floor covering	VK8	●	○	○	○	○	○	○	£0.00	£0.00
	Wood floor	V43	○	●	●	●	●	●	●	£0.00	£0.00
Load Securing	Load securing rails (2) fitted to floor L3 length of vehicle. Note: compatible cargo straps available from the Mercedes-Benz Accessory range										
	For L1 Panel Van	VV2	○	○	○	○	○	○	○	£180.00	£216.00
	For L2 Panel Van	VV2	○	○	○	○	○	○	○	£200.00	£240.00
	For L3 Panel Van	VV2	—	—	—	○	○	○	○	£230.00	£276.00
	For L4 Panel Van	VV2	—	—	—	○	○	○	○	£270.00	£324.00
	Load-securing rails fitted at roof height inside load space. Note: compatible cargo straps available from the Mercedes-Benz Accessory range										
	For L1 Panel Van	VC4	○	○	○	○	○	○	○	£180.00	£216.00
	For L2 Panel Van	VC4	○	○	○	○	○	○	○	£200.00	£240.00

● Standard ○ Optional — Not available

Equipment (standard and optional overview).

Equipment	Description	Option code	Front-wheel drive			Rear-wheel drive		All-wheel drive		Basic Price exc. VAT	Basic Price inc. VAT
			PURE	PROGRESSIVE	PREMIUM	PROGRESSIVE	PREMIUM	PROGRESSIVE	PREMIUM		
Loading and Towing (cont.)											
Load Securing (cont.)	For L3 Panel Van	VC4	—	—	—	○	○	○	○	£230.00	£276.00
	For L4 Panel Van	VC4	—	—	—	○	○	○	○	£270.00	£324.00
	Load-securing rails fitted at waist height inside load space.										
	Note: compatible cargo straps available from the Mercedes-Benz Accessory range. Rail not fitted to side load door										
	For L1 Panel Van	V42	○	○	○	○	○	○	○	£180.00	£216.00
	For L2 Panel Van	V42	○	○	○	○	○	○	○	£200.00	£240.00
	For L3 Panel Van	V42	—	—	—	○	○	○	○	£240.00	£288.00
	For L4 Panel Van	V42	—	—	—	○	○	○	○	£270.00	£324.00
	Anchoring rail on either side wall, below the roof frame	VC4	○	○	○	○	○	○	○	£470.00	£564.00
	Load securing rail system	VV2	○	○	○	○	○	○	○	£200.00	£240.00
Pallet support in sliding door step	V24	—	—	—	○	○	○	○	£95.00	£114.00	
Weight supporting wheel arch	V52	○	○	○	○	○	○	○	£355.00	£426.00	
Load steps	Cross member with integrated step	QA9	—	—	—	○	○	○	○	£335.00	£402.00
	Rear door step	W73	○	○	○	○	○	○	○	£120.00	£144.00
	Rear step sprung	W76	○	○	○	○	○	○	○	£500.00	£600.00
	Step, wide, at rear end	W75	○	○	○	○	○	○	○	£295.00	£354.00
Towing Equipment	Crossmember for trailer coupling	Q10	○	○	○	○	○	○	○	£230.00	£276.00
	Electrical components for trailer socket	E57	○	○	○	○	○	○	○	£105.00	£126.00
	Gross Combination Weight up to max. 8.0T Note: Only available in conjunction with OM642 DE 30 LA V6 engine for vehicles with 5,000kg or 5,500kg gross vehicle weight rating.	XP6	—	—	—	○	○	○	○	£0.00	£0.00
	Gross Combination Weight up to max. 8.75T	XP7	○	○	○	○	○	○	○	£0.00	£0.00
	Pre-installation for vehicle towing capacity up to 2,800kg Includes: Electrical components for trailer socket (E57). Axle ratio i = 4,182 (AR3).	QA5	—	—	—	○	○	○	○	£155.00	£186.00
	Pre-installation for vehicle towing capacity up to 3,500kg Includes: Electrical components for trailer socket (E57). Axle ratio i = 4,727 (AR5).	QA3	—	—	—	○	○	○	○	£300.00	£360.00
	Removable tow ball trailer coupling	Q50	○	○	○	○	○	○	○	£380.00	£456.00
	Towing eye rear	Q67	○	○	○	○	○	○	○	£15.00	£18.00

● Standard ○ Optional — Not available

Equipment (standard and optional overview).

Equipment	Description	Option code	Front-wheel drive			Rear-wheel drive		All-wheel drive		Basic Price exc. VAT	Basic Price inc. VAT
			PURE	PROGRESSIVE	PREMIUM	PROGRESSIVE	PREMIUM	PROGRESSIVE	PREMIUM		
Loading and Towing (cont.)											
Towing Equipment (cont.)	Trailer coupling, 2.8T trailer load, bolted	QA0	—	—	—	○	○	○	○	£1,015.00	£1,218.00
	Trailer coupling for increased towing capacity 2.8T/3.0T Includes: Electrical components for trailer socket (E57). Axle ratio i = 4,182 (AR3).	QA8	—	—	—	○	○	○	○	£565.00	£678.00
	Trailer coupling for increased towing capacity of 3.5T Includes: Electrical components for trailer socket (E57). Axle ratio i = 4,727 (AR5) and 7G-TRONIC (G42).	QA7	—	—	—	○	○	○	○	£635.00	£762.00
	Trailer coupling with fixed tow ball	Q22	○	○	○	○	○	○	○	£335.00	£402.00
	Trailer coupling with mouth 243/U 115	Q20	—	—	—	○	○	○	○	£490.00	£588.00
	Trailer socket, 13-pin	E43	○	○	○	○	○	○	○	£140.00	£168.00
Mirrors and Windows											
Mirrors	Electrically foldable exterior mirrors Includes: Side mirrors, heated and power-adjustable (F68).	F64	○	○	○	○	○	○	○	£220.00	£264.00
	Exerior mirrors without indicators Includes: Direction indicators on the side at the front (L44).	FU5	○	○	○	○	○	●	●	£95.00	£114.00
	Heated and power-adjustable side mirrors	F68	○	○	○	○	○	○	○	£170.00	£204.00
	Rear-view mirror	F61	○	○	○	○	○	○	○	£0.00	£0.00
Windows	Back pane heatable Includes: Windows in liftgate/hinged rear-end doors (W61) and Stowage compartment with net in rear doors (VA7).	H22	○	○	○	○	○	○	○	£495.00	£594.00
	Front right window fixed in side wall/sliding door	W17	○	○	○	○	○	○	○	£120.00	£144.00
	Fixed window, centre left Note: Only available for Tourer and Panel Van with L3 and L4. Includes: Fixed window, rear left (W27).	W22	○	○	○	○	○	○	○	£120.00	£144.00
	Fixed window, centre right Note: Only available for the Sprinter Tourer and Panel Van with L3 and L4 Includes: Fixed window at rear right (W28).	W23	—	—	—	○	○	○	○	£120.00	£144.00
	Fixed window, rear left Includes: Fixed window at centre left (W22).	W27	○	○	○	○	○	○	○	£120.00	£144.00
	Fixed window, rear right	W28	○	○	○	○	○	○	○	£120.00	£144.00
	Heat-insulating glass with filter band on windscreen	H21	●	●	●	●	●	●	●	£0.00	£0.00

● Standard ○ Optional — Not available

Equipment (standard and optional overview).

Equipment	Description	Option code	Front-wheel drive			Rear-wheel drive		All-wheel drive		Basic Price exc. VAT	Basic Price inc. VAT
			PURE	PROGRESSIVE	PREMIUM	PROGRESSIVE	PREMIUM	PROGRESSIVE	PREMIUM		
Mirrors and Windows (cont.)											
Windows (cont.)	Sliding window centre left Note: Only available for Tourer and Panel Van with L3 wheelbase (4,325mm).	W24	○	○	○	○	○	○	○	£215.00	£258.00
	Sliding window centre right Note: Only available for Panel Van with L3 and L4.	W25	—	—	—	—	—	—	—	£215.00	£258.00
	Sliding window in front left side wall/sliding door	W18	○	○	○	○	○	○	○	£240.00	£288.00
	Sliding window in front right side wall/sliding door	W19	○	○	○	○	○	○	○	£240.00	£288.00
	Window front left, fixed, in sidewall/sliding door	W16	○	○	○	○	○	○	○	£120.00	£144.00
	Window fixed rear on the roof	D22	○	○	○	○	○	○	○	£470.00	£564.00
	Windscreen, heated Includes: TEMPMATIC semi-automatic climate control system (HH9).	F49	○	○	○	○	○	○	○	£1,330.00	£1,596.00
	Windows in liftgate/hinged rear-end doors Includes: Stowage compartment with net in rear doors (VA7).	W61	○	○	○	○	○	○	○	£365.00	£438.00
	Window in liftgate/rear-end door with wiper/washer Includes: Stowage compartment with net in rear doors (VA7), Cable duct on rear portal (V95), Back pane heatable (H22) and Cable duct on side wall (V94).	W78	○	○	○	○	○	○	○	£650.00	£780.00
	Privacy glass tint in all windows fitted from B pillar backwards. Not available for L1 models.										
	For L2 variants only Includes: Front right window fixed in side wall/sliding door (W17).	W70	○	○	○	○	○	○	○	£120.00	£144.00
	For L3/L4 Van and L2/L3 crewcab Includes: Front right window fixed in side wall/sliding door (W17).	W70	○	○	○	○	○	○	○	£120.00	£144.00
	Van with all-round panorama glazing	W02	—	—	—	○	○	○	○	£1,180.00	£1,416.00

● Standard ○ Optional — Not available

Engine and gearbox.

	Euro 6d-TEMP			Euro VI		
	x14CDi	x15CDi	x17CDi	x14CDi	x16CDi	x19CDi
Fuel	Diesel			Diesel		
Mixture preparation/injection method	Common-rail direct injection with twin stage turbocharging			Common-rail direct injection with twin stage turbocharging		
Cylinder arrangement	4 cyl 16v			4cyl 16v	6cyl 24v	
Cubic capacity	2,143cc	1,950cc		2,143cc	2,987cc	
EU exhaust emission standard	Euro 6d-TEMP			Euro VI		
Output, max. at 3,800rpm	143hp	150hp	170hp	143hp	163hp	190hp
	105kW	110kW	125kW	100kW	120kW	140kW
Torque, max.	330 Nm at 1,200-2,400rpm	340 Nm at 1,500-2,400rpm	380 Nm at 1,600-2,400rpm	330 Nm at 1,200-2,400rpm	360 Nm at 1,400-2,400rpm	440 Nm at 1,400-2,400rpm
Fuel tank capacity FWD	65 Litres	—	—	—		
Fuel tank capacity RWD	—	71 litres		71 litres		
AbBlue® capacity	22 litres			22 litres		
6-speed manual transmission	●	●	●	●	●	●
7G-TRONIC	—	—	—	○	○	○
9G-TRONIC	○	○	○	—	—	—
Front-wheel drive	●	—	—	—	—	—
Rear-wheel drive	—	●	●	●	●	●
Alternator	14 V/175 A	14 V/180 A		14 V/180 A		
Battery	Heavy-duty battery (12v 92 aH)			Heavy-duty battery (12v 92 aH)		

● Standard ○ Optional — Not available

Fuel consumption, performance and CO₂ emissions.

Euro 6d-TEMP					
Model	Fuel Consumption (MPG)				
	Combined	Low-Speed	Medium-Speed	High-Speed	Extra High-Speed
Panel Van – PURE					
214 CDi Van L1 H1 FWD	32.1	28.8	35.8	37.7	28.5
214 CDi Van L2 H1 FWD	31.7	28.5	34.9	37.2	28.2
Panel Van – PROGRESSIVE					
314 CDi Van L1 H1 FWD	31.4	28.0	34.4	36.7	28.0
314 CDi Van L2 H1 FWD	31.0	27.7	34.0	36.2	27.7
315 CDi Van L1 H1 RWD	32.1	31.7	36.2	37.2	27.2
315 CDi Van L2 H2 RWD	30.4	30.7	34.9	35.3	25.4
315 CDi Van L3 H2 RWD	29.7	29.7	33.6	34.4	24.8
315 CDi Van L4 H2 RWD	29.4	29.4	33.2	34.0	24.8
317 CDi Van L2 H2 RWD	30.4	30.7	34.4	34.9	25.4
317 CDi Van L3 H2 RWD	29.4	29.4	33.2	34.0	25.0
317 CDi Van L4 H2 RWD	29.1	29.1	32.8	33.6	24.8
Panel Van – PREMIUM					
314 CDi Van L1 H1 FWD	31.4	28.0	34.4	36.7	28.0
314 CDi Van L2 H1 FWD	31.0	27.4	33.6	35.8	27.7
315 CDi Van L1 H1 RWD*	32.1	31.4	35.8	37.2	27.2
315 CDi Van L2 H2 RWD	30.4	30.7	34.4	35.3	25.2
315 CDi Van L3 H2 RWD	29.4	29.7	33.2	34.0	24.8
315 CDi Van L4 H2 RWD	29.1	29.1	32.8	34.0	24.6
317 CDi Van L2 H2 RWD	30.1	30.4	34.4	34.9	25.4
317 CDi Van L3 H2 RWD	29.4	29.4	32.8	33.6	25.0
317 CDi Van L4 H2 RWD	29.1	29.1	32.5	33.6	24.8

* This is a special order Sprinter model. If adding the Crew Van Pack Upgrade it increases the kerb weight by approx 77kg and decreases payload by approx 77kg.

All figures are based on a standard specification. The choice of wheels and transmission may affect CO₂ emissions and corresponding Road Fund Licence. The indicated values were determined according to the prescribed measurement method – Worldwide Harmonised Light Vehicle Test Procedure (WLTP). Figures shown may include options which are not available in the UK. Figures shown are for comparability purposes; only compare with other vans tested to the same technical procedures. Figures may not reflect real life driving results, which will depend upon a number of factors including factory-fitted options, accessories fitted (post registration), variations in weather, driving styles and vehicle load. Further information about the test used to establish fuel consumption and CO₂ figures can be found at <https://www.mercedes-benz.co.uk/vans/en/WLTP>

Euro VI					
Model	Fuel Consumption (MPG)				
	Combined	Low-Speed	Medium-Speed	High-Speed	Extra High-Speed
Panel Van – PROGRESSIVE					
314 CDi Van L2 H2 RWD					
314 CDi Van L3 H2 RWD					
314 CDi Van L4 H2 RWD					
316 CDi Van L2 H2 RWD					
316 CDi Van L3 H2 RWD					
316 CDi Van L4 H2 RWD					
319 CDi Van L2 H2 RWD					
319 CDi Van L3 H2 RWD					
319 CDi Van L4 H2 RWD					
514 CDi Van L2 H2 RWD					
514 CDi Van L3 H2 RWD					
514 CDi Van L4 H2 RWD					
516 CDi Van L2 H2 RWD					
516 CDi Van L3 H2 RWD					
516 CDi Van L4 H2 RWD					
519 CDi Van L2 H2 RWD					
519 CDi Van L3 H2 RWD					
519 CDi Van L4 H2 RWD					
Panel Van – PREMIUM					
314 CDi Van L2 H2 RWD*					
314 CDi Van L3 H2 RWD					
314 CDi Van L4 H2 RWD					
316 CDi Van L2 H2 RWD*					
316 CDi Van L3 H2 RWD					
316 CDi Van L4 H2 RWD					
319 CDi Van L2 H2 RWD*					
319 CDi Van L3 H2 RWD					
319 CDi Van L4 H2 RWD					
514 CDi Van L2 H2 RWD					
514 CDi Van L3 H2 RWD					
514 CDi Van L4 H2 RWD					
516 CDi Van L2 H2 RWD					
516 CDi Van L3 H2 RWD					
516 CDi Van L4 H2 RWD					
519 CDi Van L2 H2 RWD					
519 CDi Van L3 H2 RWD					
519 CDi Van L4 H2 RWD					

Coming soon.

Coming soon.

Fuel consumption, performance and CO₂ emissions.

Euro 6d-TEMP					
Model	CO ₂ emissions (g/km)				
	Combined	Low-Speed	Medium-Speed	High-Speed	Extra High-Speed
Panel Van – PURE					
214 CDi Van L1 H1 FWD	230	257	208	197	260
214 CDi Van L2 H1 FWD	233	261	211	200	263
Panel Van – PROGRESSIVE					
314 CDi Van L1 H1 FWD	235	265	215	202	264
314 CDi Van L2 H1 FWD	239	269	219	205	268
315 CDi Van L1 H1 RWD	230	233	205	198	272
315 CDi Van L2 H2 RWD	243	240	213	209	292
315 CDi Van L3 H2 RWD	250	249	221	216	298
315 CDi Van L4 H2 RWD	252	252	224	218	300
317 CDi Van L2 H2 RWD	244	242	215	212	290
317 CDi Van L3 H2 RWD	251	251	223	218	296
317 CDi Van L4 H2 RWD	254	254	226	220	298
Panel Van – PREMIUM					
314 CDi Van L1 H1 FWD	236	266	216	203	265
314 CDi Van L2 H1 FWD	240	270	220	206	268
315 CDi Van L1 H1 RWD*	231	235	206	199	273
315 CDi Van L2 H2 RWD	244	242	215	210	293
315 CDi Van L3 H2 RWD	251	250	223	217	299
315 CDi Van L4 H2 RWD	254	253	225	219	301
317 CDi Van L2 H2 RWD	245	244	216	213	291
317 CDi Van L3 H2 RWD	252	253	224	219	297
317 CDi Van L4 H2 RWD	255	255	227	221	299

* This is a special order Sprinter model. If adding the Crew Van Pack Upgrade it increases the kerb weight by approx 77kg and decreases payload by approx 77kg.

All figures are based on a standard specification. The choice of wheels and transmission may affect CO₂ emissions and corresponding Road Fund Licence. The indicated values were determined according to the prescribed measurement method – Worldwide Harmonised Light Vehicle Test Procedure (WLTP). Figures shown may include options which are not available in the UK. Figures shown are for comparability purposes; only compare with other vans tested to the same technical procedures. Figures may not reflect real life driving results, which will depend upon a number of factors including factory-fitted options, accessories fitted (post registration), variations in weather, driving styles and vehicle load. Further information about the test used to establish fuel consumption and CO₂ figures can be found at <https://www.mercedes-benz.co.uk/vans/en/WLTP>

Euro VI					
Model	CO ₂ emissions (g/km)				
	Combined	Low-Speed	Medium-Speed	High-Speed	Extra High-Speed
Panel Van – PROGRESSIVE					
314 CDi Van L2 H2 RWD					
314 CDi Van L3 H2 RWD					
314 CDi Van L4 H2 RWD					
316 CDi Van L2 H2 RWD					
316 CDi Van L3 H2 RWD					
316 CDi Van L4 H2 RWD					
319 CDi Van L2 H2 RWD					
319 CDi Van L3 H2 RWD					
319 CDi Van L4 H2 RWD					
514 CDi Van L2 H2 RWD					
514 CDi Van L3 H2 RWD					
514 CDi Van L4 H2 RWD					
516 CDi Van L2 H2 RWD					
516 CDi Van L3 H2 RWD					
516 CDi Van L4 H2 RWD					
519 CDi Van L2 H2 RWD					
519 CDi Van L3 H2 RWD					
519 CDi Van L4 H2 RWD					
Panel Van – PREMIUM					
314 CDi Van L2 H2 RWD*					
314 CDi Van L3 H2 RWD					
314 CDi Van L4 H2 RWD					
316 CDi Van L2 H2 RWD*					
316 CDi Van L3 H2 RWD					
316 CDi Van L4 H2 RWD					
319 CDi Van L2 H2 RWD*					
319 CDi Van L3 H2 RWD					
319 CDi Van L4 H2 RWD					
514 CDi Van L2 H2 RWD					
514 CDi Van L3 H2 RWD					
514 CDi Van L4 H2 RWD					
516 CDi Van L2 H2 RWD					
516 CDi Van L3 H2 RWD					
516 CDi Van L4 H2 RWD					
519 CDi Van L2 H2 RWD					
519 CDi Van L3 H2 RWD					
519 CDi Van L4 H2 RWD					

Coming soon.

Coming soon.

Weights and payloads.

Euro 6d-TEMP				
Model	Kerb weight (kg)	Gross Vehicle Weight (kg)	Payload (kg)	Gross Train Weight (kg)
Panel Van – PURE				
214 CDi Van L1 H1 FWD	2,085	3,000	915	5,000
214 CDi Van L2 H1 FWD	2,158	3,000	842	5,000
Panel Van – PROGRESSIVE				
314 CDi Van L1 H1 FWD	2,096	3,500	1,404	5,500
314 CDi Van L2 H1 FWD	2,180	3,500	1,320	5,500
315 CDi Van L1 H1 RWD	2,163	3,500	1,337	5,500
315 CDi Van L2 H2 RWD	2,265	3,500	1,235	5,500
315 CDi Van L3 H2 RWD	2,416	3,500	1,084	5,500
315 CDi Van L4 H2 RWD	2,463	3,500	1,037	5,500
317 CDi Van L2 H2 RWD	2,291	3,500	1,209	5,500
317 CDi Van L3 H2 RWD	2,442	3,500	1,058	5,500
317 CDi Van L4 H2 RWD	2,489	3,500	1,011	5,500
Panel Van – PREMIUM				
314 CDi Van L1 H1 FWD	2,122	3,500	1,378	5,500
314 CDi Van L2 H1 FWD	2,206	3,500	1,294	5,500
315 CDi Van L1 H1 RWD*	2,186	3,500	1,314	5,500
315 CDi Van L2 H2 RWD	2,288	3,500	1,212	5,500
315 CDi Van L3 H2 RWD	2,439	3,500	1,061	5,500
315 CDi Van L4 H2 RWD	2,486	3,500	1,014	5,500
317 CDi Van L2 H2 RWD	2,314	3,500	1,186	5,500
317 CDi Van L3 H2 RWD	2,465	3,500	1,035	5,500
317 CDi Van L4 H2 RWD	2,512	3,500	988	5,500

* This is a special order Sprinter model. If adding the Crew Van Pack Upgrade it increases the kerb weight by approx 77kg and decreases payload by approx 77kg.

Euro VI				
Model	Kerb weight (kg)	Gross Vehicle Weight (kg)	Payload (kg)	Gross Train Weight (kg)
Panel Van – PROGRESSIVE				
314 CDi Van L2 H2 RWD	2,263	3,500	1,237	5,500
314 CDi Van L3 H2 RWD	2,414	3,500	1,086	5,500
314 CDi Van L4 H2 RWD	2,461	3,500	1,039	5,500
316 CDi Van L2 H2 RWD	2,263	3,500	1,237	5,500
316 CDi Van L3 H2 RWD	2,414	3,500	1,086	5,500
316 CDi Van L4 H2 RWD	2,461	3,500	1,039	5,500
319 CDi Van L2 H2 RWD	2,317	3,500	1,183	5,500
319 CDi Van L3 H2 RWD	2,468	3,500	1,032	5,500
319 CDi Van L4 H2 RWD	2,515	3,500	985	5,500
514 CDi Van L2 H2 RWD	2,471	5,000	2,529	7,000
514 CDi Van L3 H2 RWD	2,635	5,000	2,365	7,000
514 CDi Van L4 H2 RWD	2,681	5,000	2,319	7,000
516 CDi Van L2 H2 RWD	2,471	5,000	2,529	7,000
516 CDi Van L3 H2 RWD	2,635	5,000	2,365	7,000
516 CDi Van L4 H2 RWD	2,681	5,000	2,319	7,000
519 CDi Van L2 H2 RWD	2,504	5,000	2,496	7,000
519 CDi Van L3 H2 RWD	2,668	5,000	2,332	7,000
519 CDi Van L4 H2 RWD	2,714	5,000	2,286	7,000
316 CDi Van L2 H2 AWD	2,479	3,500	1,021	5,500
319 CDi Van L2 H2 AWD	2,503	3,500	997	5,500
316 CDi Van L3 H2 AWD	2,630	3,500	870	5,500
319 CDi Van L3 H2 AWD	2,654	3,500	846	5,500
516 CDi Van L2 H2 AWD	2,667	5,000	2,333	7,000
519 CDi Van L2 H2 AWD	2,691	5,000	2,309	7,000
516 CDi Van L3 H2 AWD	2,831	5,000	2,169	7,000
519 CDi Van L3 H2 AWD	2,855	5,000	2,145	7,000
Panel Van – PREMIUM				
314 CDi Van L2 H2 RWD*	2,287	3,500	1,213	5,500
314 CDi Van L3 H2 RWD	2,438	3,500	1,062	5,500

For the information on a Sprinter Crew Van, please speak to your local Dealer:

➤ [Find your nearest Dealership](#)

Weights and payloads.

Euro VI

Model	Kerb weight (kg)	Gross Vehicle Weight (kg)	Payload (kg)	Gross Train Weight (kg)
314 CDi Van L4 H2 RWD	2,485	3,500	1,015	5,500
316 CDi Van L2 H2 RWD*	2,287	3,500	1,213	5,500
316 CDi Van L3 H2 RWD	2,438	3,500	1,062	5,500
316 CDi Van L4 H2 RWD	2,485	3,500	1,015	5,500
319 CDi Van L2 H2 RWD*	2,341	3,500	1,159	5,500
319 CDi Van L3 H2 RWD	2,492	3,500	1,008	5,500
319 CDi Van L4 H2 RWD	2,539	5,000	961	7,000
514 CDi Van L2 H2 RWD	2,492	5,000	2,508	7,000
514 CDi Van L3 H2 RWD	2,656	5,000	2,344	7,000
514 CDi Van L4 H2 RWD	2,702	5,000	2,298	7,000
516 CDi Van L2 H2 RWD	2,492	5,000	2,508	7,000
516 CDi Van L3 H2 RWD	2,656	5,000	2,344	7,000
516 CDi Van L4 H2 RWD	2,702	5,000	2,298	7,000
519 CDi Van L2 H2 RWD	2,525	5,000	2,475	7,000
519 CDi Van L3 H2 RWD	2,689	5,000	2,311	7,000
519 CDi Van L4 H2 RWD	2,735	5,000	2,265	7,000

Panel Van – PREMIUM

316 CDi Van L2 H2 AWD	2,500	3,500	1,000	5,500
319 CDi Van L2 H2 AWD	2,524	3,500	976	5,500
316 CDi Van L3 H2 AWD	2,651	3,500	849	5,500
319 CDi Van L3 H2 AWD	2,675	3,500	825	5,500

* This is a special order Sprinter model. If adding the Crew Van Pack Upgrade it increases the kerb weight by approx 77kg and decreases payload by approx 77kg.

Euro VI

Model	Kerb weight (kg)	Gross Vehicle Weight (kg)	Payload (kg)	Gross Train Weight (kg)
516 CDi Van L2 H2 AWD	2,688	5,000	2,312	7,000
519 CDi Van L2 H2 AWD	2,712	5,000	2,288	7,000
516 CDi Van L3 H2 AWD	2,852	5,000	2,148	7,000
519 CDi Van L3 H2 AWD	2,876	5,000	2,124	7,000

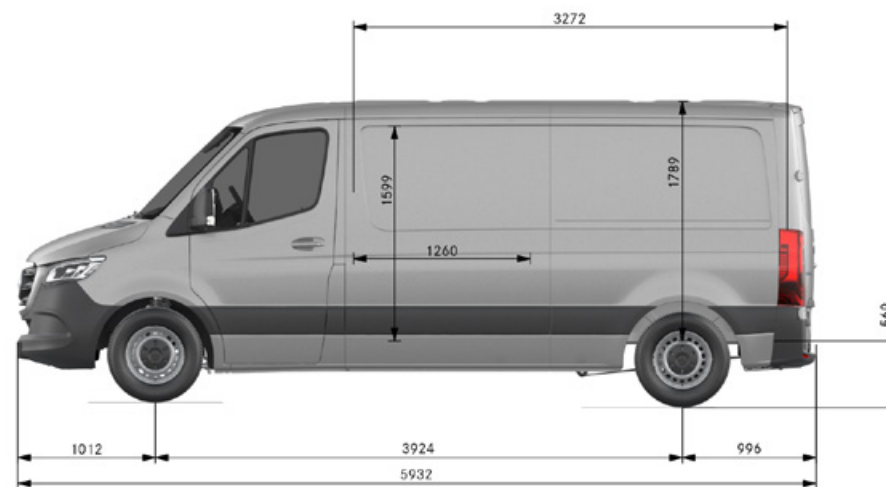
For the information on a Sprinter Crew Van, please speak to your local Dealer:

➤ [Find your nearest Dealership](#)

Dimensions.

FRONT-WHEEL DRIVE - PANEL VAN L2 H1

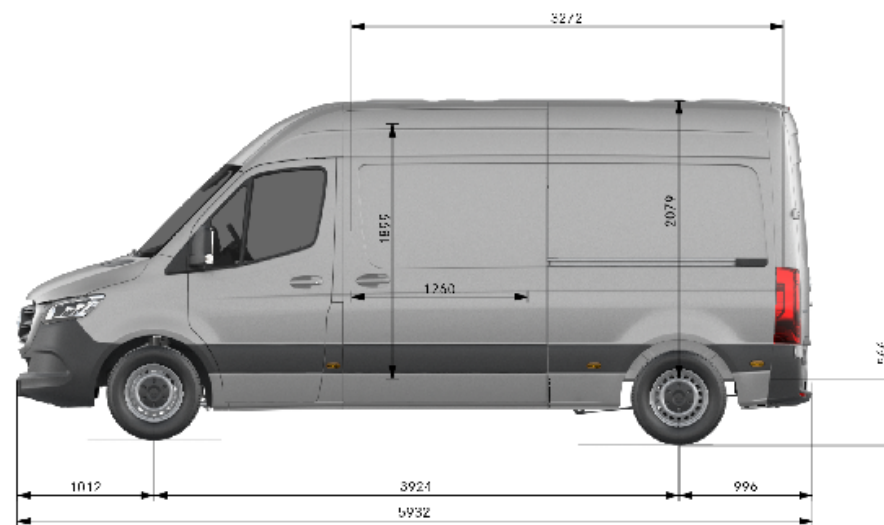
Wheelbase	Wheelbase length	3,924mm
	Turning circle	15.2m
	Track circle	14.4m
	Front track width	1,759mm
	Rear track width	1,770mm
Vehicle	Length	5,932mm
	Height (unladen)	2,351mm
	Width (inc. wing mirrors)	2,345mm
	Ground clearance	143mm
Load compartment	Load floor length	3,397mm
	Load volume	9.5m ³
	Max. width	1,787mm
	Width between wheel arches	1,412mm
	Height	1,789mm
	Rear loading height (step height from ground to load floor)	569mm



Dimensions.

FRONT-WHEEL DRIVE - PANEL VAN L1 H2

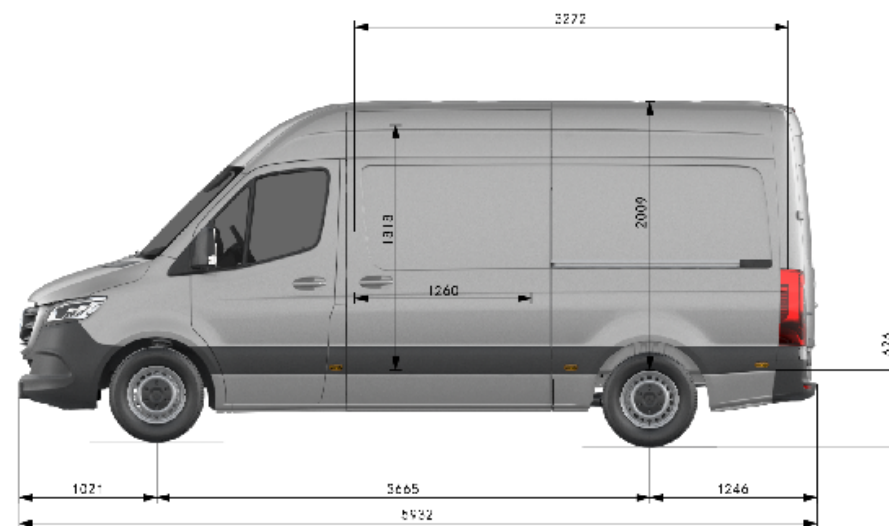
Wheelbase	Wheelbase length	3,924mm
	Turning circle	15.2m
	Track circle	14.4m
	Front track width	1,759mm
	Rear track width	1,770mm
Vehicle	Length	5,932mm
	Height (unladen)	2,638mm
	Width (inc. wing mirrors)	2,345mm
	Ground clearance	143mm
Load compartment	Load floor length	3,397mm
	Load volume	11m ³
	Max. width	1,787mm
	Width between wheel arches	1,412mm
	Height	2,079mm
	Rear loading height (step height from ground to load floor)	566mm



Dimensions.

REAR-WHEEL DRIVE - PANEL VAN L2 H2

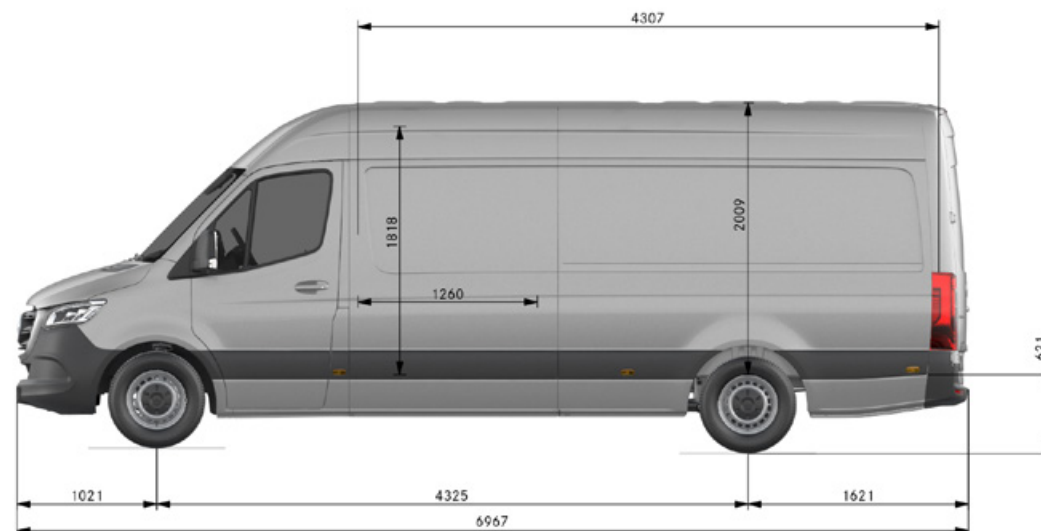
Wheelbase	Wheelbase length	3,665mm
	Turning circle	13.3m
	Track circle	12.4m
	Front track width	1,726mm
	Rear track width	1,732mm
Vehicle	Length	5,932mm
	Height (unladen)	2,620mm
	Width (inc. wing mirrors)	2,345mm
	Ground clearance	162mm
Load compartment	Load floor length	3,272mm
	Load volume	10.5m ³
	Max. width	1,787mm
	Width between wheel arches	1,350mm
	Height	2,009mm
	Rear loading height (step height from ground to load floor)	626mm



Dimensions.

REAR-WHEEL DRIVE - PANEL VAN L3 H2

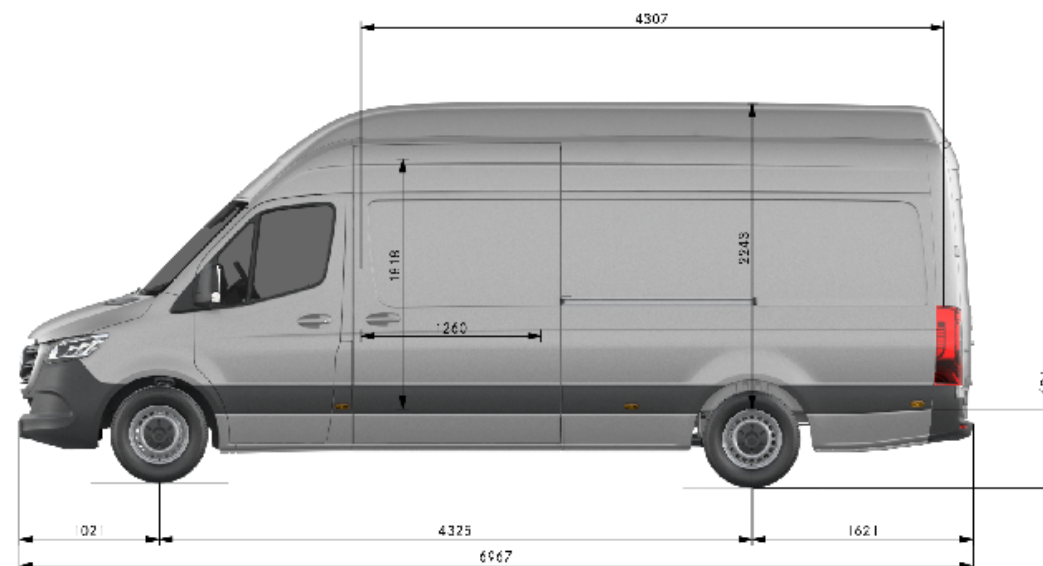
Wheelbase	Wheelbase length	4,325mm
	Turning circle	15.3m
	Track circle	14.4m
	Front track width	1,726mm
	Rear track width	1,732mm
Vehicle	Length	6,967mm
	Height (unladen)	2,616mm
	Width (inc. wing mirrors)	2,345mm
	Ground clearance	162mm
Load compartment	Load floor length	4,410mm
	Load volume	14m ³
	Max. width	1,787mm
	Width between wheel arches	1,350mm
	Height	2,009mm
	Rear loading height (step height from ground to load floor)	621mm



Dimensions.

REAR-WHEEL DRIVE - PANEL VAN L3 H3

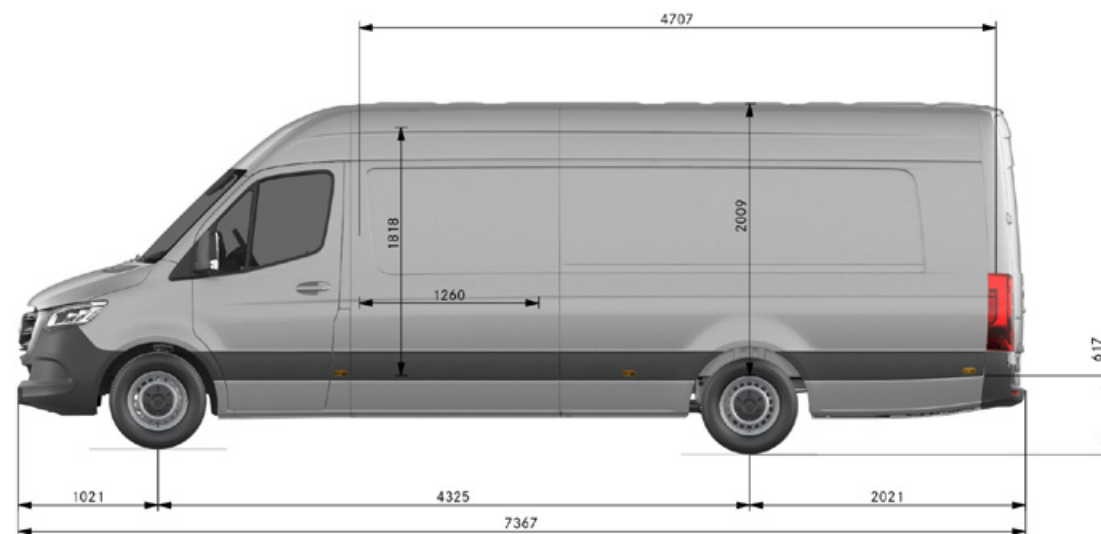
Wheelbase	Wheelbase length	4,325mm
	Turning circle	15.3m
	Track circle	14.4m
	Front track width	1,726mm
	Rear track width	1,732mm
Vehicle	Length	6,967mm
	Height (unladen)	2,831mm
	Width (inc. wing mirrors)	2,345mm
	Ground clearance	162mm
Load compartment	Load floor length	4,410mm
	Load volume	15.5m ³
	Max. width	1,787mm
	Width between wheel arches	1,350mm
	Height	2,243mm
	Rear loading height (step height from ground to load floor)	621mm



Dimensions.

REAR-WHEEL DRIVE - PANEL VAN L4 H2

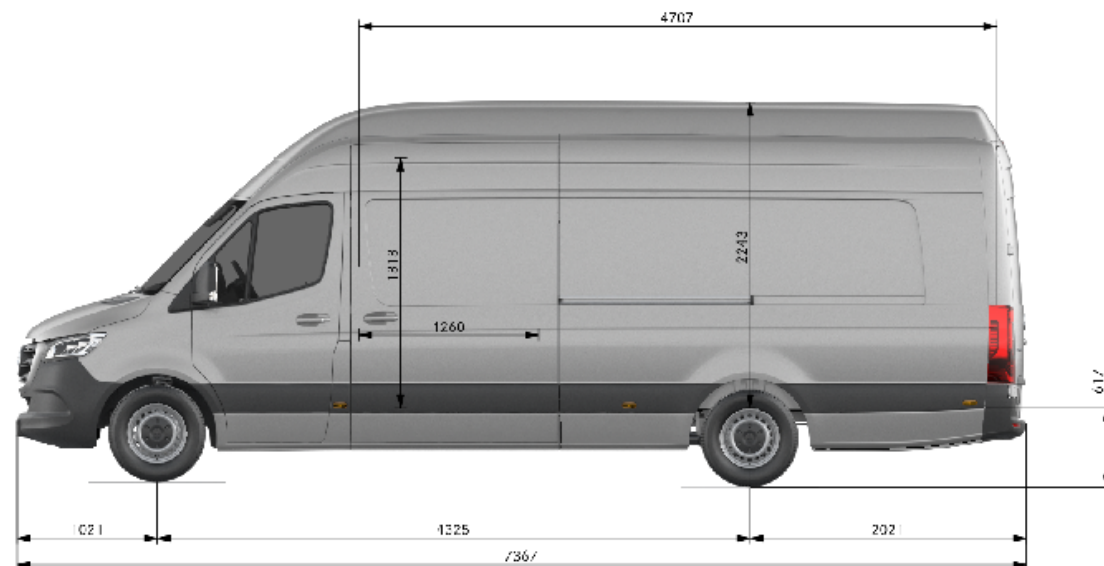
Wheelbase	Wheelbase length	4,325mm
	Turning circle	15.3m
	Track circle	14.4m
	Front track width	1,726mm
	Rear track width	1,732mm
Vehicle	Length	7,367mm
	Height (unladen)	2,613mm
	Width (inc. wing mirrors)	2,345mm
	Ground clearance	162mm
Load compartment	Load floor length	4,810mm
	Load volume	15.5m ³
	Max. width	1,787mm
	Width between wheel arches	1,350mm
	Height	2,009mm
	Rear loading height (step height from ground to load floor)	617mm



Dimensions.

REAR-WHEEL DRIVE - PANEL VAN L4 H3

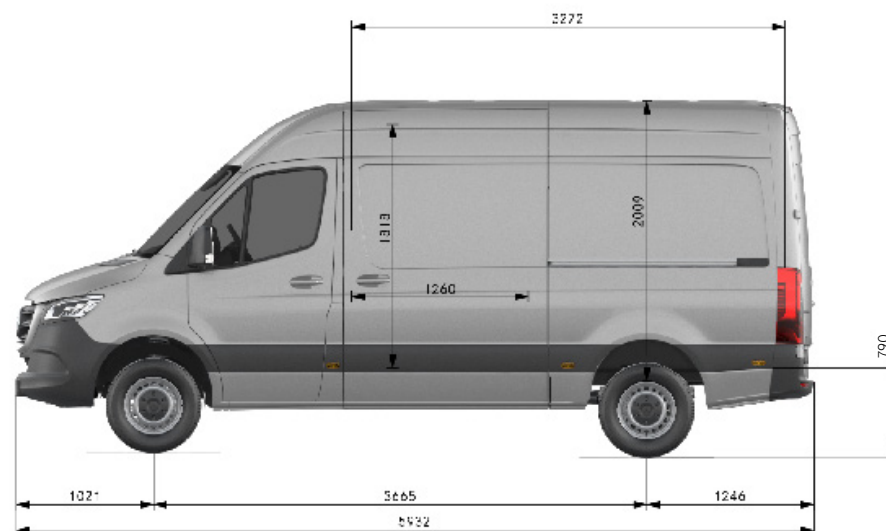
Wheelbase	Wheelbase length	4,325mm
	Turning circle	15.3m
	Track circle	14.4m
	Front track width	1,726mm
	Rear track width	1,732mm
Vehicle	Length	7,367mm
	Height (unladen)	2,825mm
	Width (inc. wing mirrors)	2,345mm
	Ground clearance	162mm
Load compartment	Load floor length	4,810mm
	Load volume	17m ³
	Max. width	1,787mm
	Width between wheel arches	1,350mm
	Height	2,243mm
	Rear loading height (step height from ground to load floor)	617mm



Dimensions.

ALL-WHEEL DRIVE - PANEL VAN L2 H2

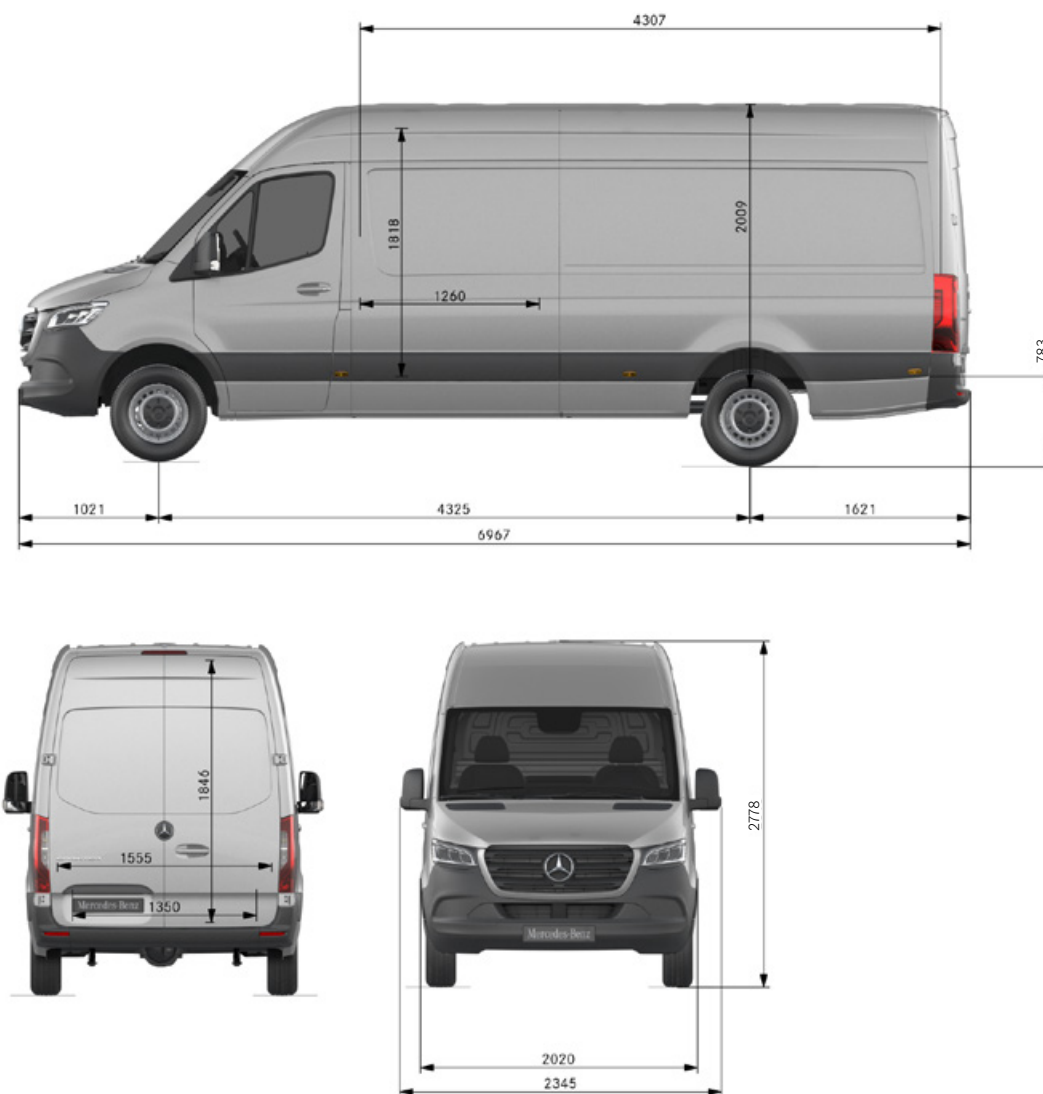
Wheelbase	Wheelbase length	3,665mm
	Turning circle	14m
	Track circle	13.1m
	Front track width	1,726mm
	Rear track width	1,732mm
Vehicle	Length	5,932mm
	Height (unladen)	2,785mm
	Width (inc. wing mirrors)	2,345mm
	Ground clearance	219mm
Load compartment	Load floor length	3,272mm
	Load volume	10.5m ³
	Max. width	1,787mm
	Width between wheel arches	1,350mm
	Height	2,009mm
	Rear loading height (step height from ground to load floor)	790mm



Dimensions.

ALL-WHEEL DRIVE - PANEL VAN L3 H2

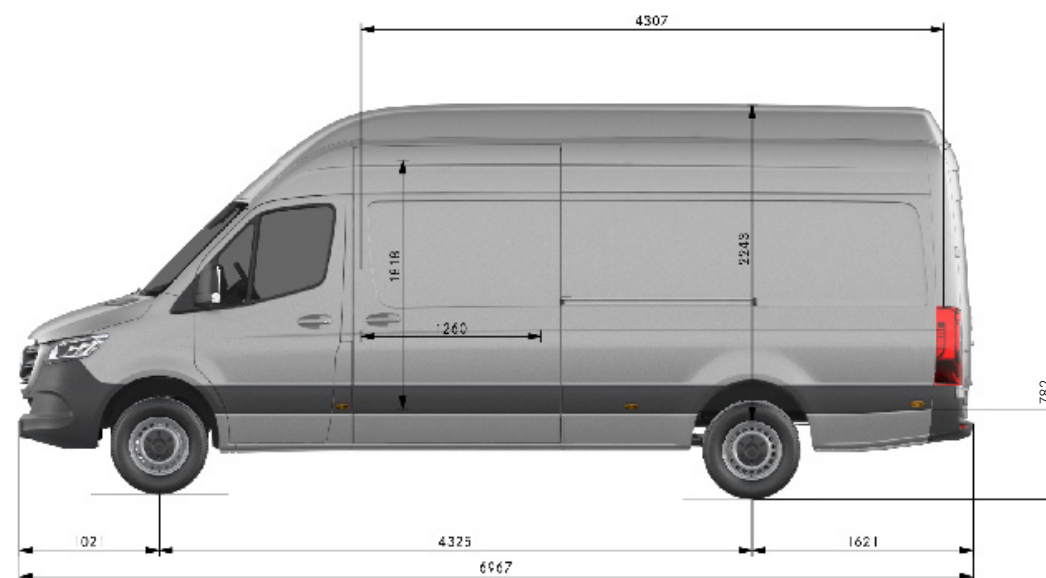
Wheelbase	Wheelbase length	4,325mm
	Turning circle	16.1m
	Track circle	15.2m
	Front track width	1,726mm
	Rear track width	1,732mm
Vehicle	Length	6,967mm
	Height (unladen)	2,778mm
	Width (inc. wing mirrors)	2,345mm
	Ground clearance	219mm
Load compartment	Load floor length	4,410mm
	Load volume	14m ³
	Max. width	1,787mm
	Width between wheel arches	1,350mm
	Height	2,009mm
	Rear loading height (step height from ground to load floor)	783mm



Dimensions.

ALL-WHEEL DRIVE - PANEL VAN L3 H3

Wheelbase	Wheelbase length	4,325mm
	Turning circle	16.1m
	Track circle	15.2m
	Front track width	1,726mm
	Rear track width	1,732mm
Vehicle	Length	6,967mm
	Height (unladen)	2,995mm
	Width (inc. wing mirrors)	2,345mm
	Ground clearance	219mm
Load compartment	Load floor length	4,410mm
	Load volume	15.5m ³
	Max. width	1,787mm
	Width between wheel arches	1,350mm
	Height	2,243mm
	Rear loading height (step height from ground to load floor)	782mm



List prices.

Euro 6d-TEMP		
Model	Basic Recommended Retail Price (Ex. VAT)	Basic Recommended Retail Price (Inc. VAT)
Panel Van – PURE		
214 CDi Van L1 H1 FWD	£27,345	£32,814
214 CDi Van L2 H1 FWD	£28,980	£34,776
Panel Van – PROGRESSIVE		
314 CDi Van L1 H1 FWD	£32,625	£39,150
314 CDi Van L2 H1 FWD	£34,205	£41,046
315 CDi Van L1 H1 RWD	£35,040	£42,048
315 CDi Van L2 H2 RWD	£37,880	£45,456
315 CDi Van L3 H2 RWD	£38,640	£46,368
315 CDi Van L4 H2 RWD	£39,390	£47,268
317 CDi Van L2 H2 RWD	£38,560	£46,272
317 CDi Van L3 H2 RWD	£39,330	£47,196
317 CDi Van L4 H2 RWD	£40,080	£48,096
Panel Van – PREMIUM		
314 CDi Van L1 H1 FWD	£34,685	£41,622
314 CDi Van L2 H1 FWD	£36,265	£43,518
315 CDi Van L1 H1 RWD*	£37,100	£44,520
315 CDi Van L2 H2 RWD	£39,940	£47,928
315 CDi Van L3 H2 RWD	£40,700	£48,840
315 CDi Van L4 H2 RWD	£41,450	£49,740
317 CDi Van L2 H2 RWD	£40,620	£48,744
317 CDi Van L3 H2 RWD	£41,390	£49,668
317 CDi Van L4 H2 RWD	£42,140	£50,568

- For Crew Van pricing, please combine your preferred RWD Panel Van price from above with the price of your preferred Crew Van Pack Upgrade – full details on [page 11](#).
- All prices based on manual transmission. Automatic transmissions available as an option – see [page 15](#)
- * This is a special order Sprinter model. Please consult your local Dealer – [find your nearest Dealership](#)

This document is for guidance only and must be used in conjunction with a configuration tool prior to final specification decisions and vehicle quotations being prepared and accepted. List prices are quoted ex-factory unless otherwise stated. Delivery charges excluding VAT will be added to model prices quoted in this document. Prices based on standard finish paint choice. Mercedes-Benz Vans UK and authorised Dealers reserve the right to alter specification and vary prices without notice. The availability of options may depend on the chosen base vehicle and other optional equipment specified, and should be confirmed with your Mercedes-Benz Vans Dealer prior to order placement. VAT is calculated at the standard rate of 20%. Mercedes-Benz Vans UK Ltd, Tongwell, Milton Keynes MK15 8BA.

Euro VI		
Model	Basic Recommended Retail Price (Ex. VAT)	Basic Recommended Retail Price (Inc. VAT)
Panel Van – PROGRESSIVE		
314 CDi Van L2 H2 RWD	£36,840	£44,208
314 CDi Van L3 H2 RWD	£37,600	£45,120
314 CDi Van L4 H2 RWD	£38,350	£46,020
316 CDi Van L2 H2 RWD	£37,520	£45,024
316 CDi Van L3 H2 RWD	£38,290	£45,948
316 CDi Van L4 H2 RWD	£39,040	£46,848
319 CDi Van L2 H2 RWD	£41,050	£49,260
319 CDi Van L3 H2 RWD	£41,815	£50,178
319 CDi Van L4 H2 RWD	£42,575	£51,090
514 CDi Van L2 H2 RWD*	£43,960	£52,752
514 CDi Van L3 H2 RWD	£44,725	£53,670
514 CDi Van L4 H2 RWD	£45,475	£54,570
516 CDi Van L2 H2 RWD*	£44,645	£53,574
516 CDi Van L3 H2 RWD	£45,415	£54,498
516 CDi Van L4 H2 RWD	£46,165	£55,398
519 CDi Van L2 H2 RWD*	£48,185	£57,822
519 CDi Van L3 H2 RWD	£48,940	£58,728
519 CDi Van L4 H2 RWD	£49,690	£59,628
316 CDi Van L2 H2 AWD	£44,960	£53,952
319 CDi Van L2 H2 AWD	£48,435	£58,122
316 CDi Van L3 H2 AWD	£45,650	£54,780
319 CDi Van L3 H2 AWD	£49,120	£58,944
516 CDi Van L2 H2 AWD	£51,740	£62,088
519 CDi Van L2 H2 AWD	£55,215	£66,258
516 CDi Van L3 H2 AWD	£52,430	£62,916
519 CDi Van L3 H2 AWD	£55,905	£67,086

List prices.

Euro VI		
Model	Basic Recommended Retail Price (Ex. VAT)	Basic Recommended Retail Price (Inc. VAT)
Panel Van - PREMIUM		
314 CDi Van L2 H2 RWD*	£38,900	£46,680
314 CDi Van L3 H2 RWD	£39,660	£47,592
314 CDi Van L4 H2 RWD	£40,410	£48,492
316 CDi Van L2 H2 RWD*	£39,580	£47,496
316 CDi Van L3 H2 RWD	£40,350	£48,420
316 CDi Van L4 H2 RWD	£41,100	£49,320
319 CDi Van L2 H2 RWD	£43,110	£51,732
319 CDi Van L3 H2 RWD	£43,875	£52,650
319 CDi Van L4 H2 RWD	£44,635	£53,562
514 CDi Van L2 H2 RWD*	£46,020	£55,224
514 CDi Van L3 H2 RWD	£46,785	£56,142
514 CDi Van L4 H2 RWD	£47,535	£57,042
516 CDi Van L2 H2 RWD*	£46,705	£56,046
516 CDi Van L3 H2 RWD	£47,475	£56,970
516 CDi Van L4 H2 RWD	£48,225	£57,870
519 CDi Van L2 H2 RWD*	£50,245	£60,294
519 CDi Van L3 H2 RWD	£51,000	£61,200
519 CDi Van L4 H2 RWD	£51,750	£62,100

Euro VI		
Model	Basic Recommended Retail Price (Ex. VAT)	Basic Recommended Retail Price (Inc. VAT)
Panel Van - PREMIUM		
316 CDi Van L2 H2 AWD	£47,020	£56,424
319 CDi Van L2 H2 AWD	£50,495	£60,594
316 CDi Van L3 H2 AWD	£47,710	£57,252
319 CDi Van L3 H2 AWD	£51,180	£61,416
516 CDi Van L2 H2 AWD	£53,800	£64,560
519 CDi Van L2 H2 AWD	£57,275	£68,730
516 CDi Van L3 H2 AWD	£54,490	£65,388
519 CDi Van L3 H2 AWD	£57,965	£69,558

- › For Crew Van pricing, please combine your preferred RWD Panel Van price from above with the price of your preferred Crew Van Pack Upgrade – full details on [page 11](#).
- › All prices based on manual transmission. Automatic transmissions available as an option – [see page 15](#)
- › * This is a special order Sprinter model. Please consult your local Dealer – [find your nearest Dealership](#)

This document is for guidance only and must be used in conjunction with a configuration tool prior to final specification decisions and vehicle quotations being prepared and accepted. List prices are quoted ex-factory unless otherwise stated. Delivery charges excluding VAT will be added to model prices quoted in this document. Prices based on standard finish paint choice. Mercedes-Benz Vans UK and authorised Dealers reserve the right to alter specification and vary prices without notice. The availability of options may depend on the chosen base vehicle and other optional equipment specified, and should be confirmed with your Mercedes-Benz Vans Dealer prior to order placement. VAT is calculated at the standard rate of 20%. Mercedes-Benz Vans UK Ltd, Tongwell, Milton Keynes MK15 8BA.

Introducing Mercedes-Benz Approved Used Vans.

Know exactly what you're getting into.

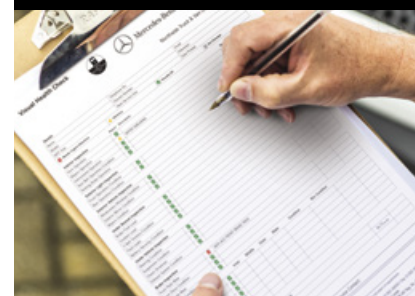
If you're looking for a used Sprinter van that offers the same commitment to quality and workmanship as new, look no further than a Mercedes-Benz Approved Used Sprinter van. Each van has been rigorously inspected by Mercedes-Benz technicians and comes with the following assurances as standard:

- > Will be no older than 6 years
- > Less than 150,000 miles on the clock
- > Full service history
- > Minimum of 24-months' warranty
- > Minimum of 3mm tyre tread depth on all tyres
- > 12-month MOT
- > Mercedes-Benz Approved Used Vans Mechanical Breakdown Insurance
- > Free 24/7 MobiloVan roadside assistance*
- > Corrosion warranty renewal
- > 10 day exchange period
- > Complimentary 7-day insurance coverage.

Find your Approved Used Sprinter:

> www.usedvans.mercedes-benz.co.uk/used-van-search/

* Terms and conditions apply



The Mercedes-Benz Sprinter 48

Sprinter PURE

Sprinter PROGRESSIVE

Sprinter PREMIUM

MBUX

Equipment

Engine and gearbox

Fuel consumption

Weights and payloads

Dimensions

List prices

Approved Used Sprinter

Finance options.

Get an agreement that suits you with Mercedes-Benz Finance.

At Mercedes-Benz Finance we have a number of finance options you can choose from to suit your business needs, because we understand the complexities of running a modern-day business...

Agility

A flexible method of financing a vehicle over a fixed term. The agreement defers your decision of whether you purchase, hand back or part-exchange your vehicle until the end of your agreement.

- Fixed regular payments mean you can easily budget
- Payments are based only on a proportion of the van's value, keeping your monthly payments lower
- Our Optional Purchase Payment avoids the risk of unplanned depreciation of your vehicle.

Hire Purchase

A straightforward route to ownership. This is the perfect way to buy a Mercedes-Benz if you want to work your way up to full ownership, spreading the overall cost over a fixed term.

- On completion of the agreement you will own the vehicle
- A flexible deposit and repayment term means you can tailor the financial agreement to suit you
- Monthly payments are not based on annual mileage.

Operating Lease

A solution for those who want to drive one of our vehicles over a fixed term, with lower monthly rentals and without the worries or commitment of ownership.

- Pay an advance rental upfront
- Rentals are based on your annual mileage agreed at the start of your agreement and only on a proportion of the vehicle's value, keeping your monthly payments lower
- Rentals are allowable against taxable profits (proportionally).

Contract Hire

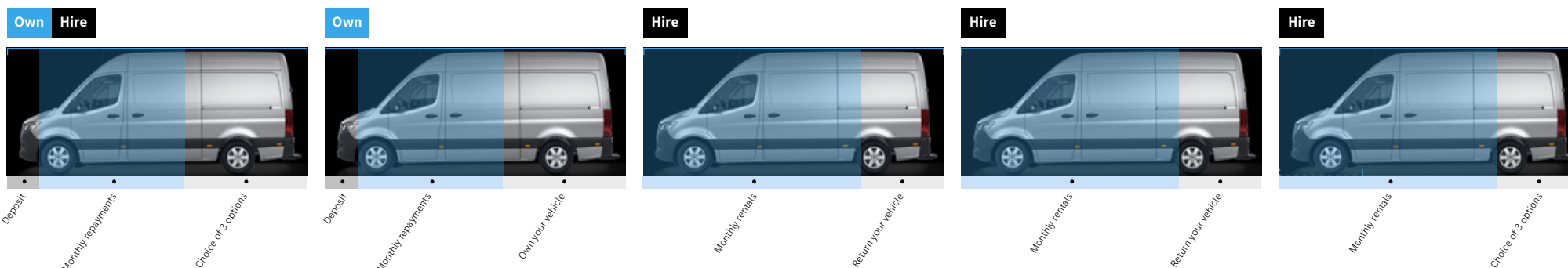
Gives you the ability to enjoy driving a Mercedes-Benz without having to take on full ownership. With Contract Hire, you lease your vehicle for a fixed period and for a fixed monthly rental.

- No need for a large initial deposit
- Repair and Maintenance options are also available
- VAT is reclaimable depending on usage (proportionally).

Finance Lease

Allows your vehicle to appear as an asset on your balance sheet, without the option of ownership as you hire a vehicle for a fixed period.

- Fixed regular payments enable you to easily budget
- The vehicle is an asset on the balance sheet, therefore tax allowances may be deducted from taxable profits
- Payments are not based on annual mileage.



► [For more information about our finance options](#)

After care.

Keeping Businesses Moving.

Once you've driven away in your new Sprinter, the support we provide doesn't stop there. Did you know we offer a number of ways to keep your business moving long into the future? It's perhaps one of our best kept secrets...

› ServiceCare

Because you don't stop, we don't either. We offer a range of servicing options to suit every business and to keep your vehicles on the road and running at their peak performance.

• ServiceCare Maintenance

Spread the cost of up to 6 services and save, without entering into a credit agreement. Pay one upfront sum or by monthly Direct Debit.

• ServiceCare Flex

Fix and reduce servicing costs for your van fleet by buying them in bulk. Specifically designed for fleets operating 25+ vehicles.

• ServiceCare Complete

Tailor a package that covers all your service and maintenance requirements and maintenance costs.

[Find out more about service and repairs](#)

› MobiloVan

All Mercedes-Benz Vans come with MobiloVan, our free roadside assistance 24/7, across Europe*. If you breakdown, have a collision or can't start your van, call MobiloVan and a technician with an average response time of under 60 minutes will arrive in a van stocked with Mercedes-Benz GenuineParts. With an average roadside repair rate of 80%, you'll be moving again in no time.

[Find out more about MobiloVan](#)

› 3 year warranty

Because we want to help keep businesses moving today and in the future, all our new vans come with a free 3 year unlimited mileage warranty.

[Find out more about warranties](#)

› 24/7 Dealer network

Our nationwide network of approved Dealers is here to help your business maintain momentum. Most Dealers work until midnight and over a third are open 24/7.

[Find out more about our Dealer network](#)

* For a full list of exclusions and all product terms please visit mbvans.co.uk/mobilovan.

