



# The Mercedes-Benz Vito.

Tourer.

Prices effective from 01 January 2023.

Mercedes-Benz





RETURN TO START

## Contents

> <b>Model overview</b>	<b>3</b>
> <b>Trims</b>	
Vito Tourer PRO	<b>4</b>
Vito Tourer SELECT	<b>5</b>
> <b>Colours and Upholstery</b>	<b>6</b>
> <b>Wheels</b>	<b>7</b>
> <b>Equipment</b>	<b>8</b>
> <b>Engine and gearbox</b>	<b>18</b>
> <b>Fuel consumption</b>	<b>19</b>
> <b>Weights and payloads</b>	<b>20</b>
> <b>Dimensions</b>	<b>21</b>
> <b>List prices</b>	<b>24</b>
> <b>Approved Used</b>	<b>25</b>
> <b>Finance options</b>	<b>26</b>
> <b>After care</b>	<b>27</b>

### Please note

This document provides information about the model range line-up and specifications of the Vito Tourer. It also contains key details about options, economy and performance of all variants. Details are correct at time of publication and are subject to revision. Any images used in this document may not reflect UK specification and are for illustrative purposes only. Images may show optional equipment which does not form part of UK standard specification.

# The Mercedes-Benz Vito Tourer.



RETURN TO START



1 model:

**Tourer:** 9 seats as standard



**L1:** 4,895mm



**L2:** 5,140mm



**L3:** 5,370mm

**Height:** 1,910mm

3 lengths:

3 trims:



**Tourer PRO**



**Tourer SELECT**

Discover more about the other Mercedes-Benz Vito models in our range:

▶ [The Vito Panel and Crew Van](#)

▶ [The eVito](#)



# The Vito Tourer PRO.

Features include:

## Interior

- Double co-driver seat
- Six-way adjustable drivers seat
- Driver and co-driver airbag
- Leather, multifunctional steering wheel
- Locking glovebox

## Exterior

- 17" steel wheels
- Door tailgate
- Heated, electrically adjustable mirrors
- Tinted window glass
- Twin sliding doors

## Safety, security and connectivity

- Active Brake ASSIST
- ATTENTION ASSIST
- Audio 30 with DAB radio, Apple/Android Car Play
- Crosswind Assist
- Cruise control with speed limiter
- Headlight assistant
- Rain sensor

From £37,025\*

\* Based on a Vito Tourer 114 PRO L1.

### • 3 lengths available

- L1: 4,895mm
- L2: 5,140mm
- L3: 5,370mm

### • 1 transmission option available

- 9G-TRONIC PLUS (automatic)

➤ [Arrange a test drive at your nearest Dealership](#)



The Mercedes-Benz Vito Tourer 4

# The Vito Tourer SELECT.

Features include:

## Interior

- Double co-driver seat
- Six-way adjustable drivers seat
- Driver and co-driver airbag
- Leather, multifunctional steering wheel
- Locking glovebox

## Exterior

- Door tailgate
- Heated, electrically adjustable mirrors
- Tinted window glass
- Twin sliding doors

## Safety, security and connectivity

- Active Brake ASSIST
- ATTENTION ASSIST
- Audio 30 with DAB radio, Apple/Android Car Play
- Crosswind Assist
- Cruise control with speed limiter
- Headlight assistant
- Rain sensor

### Additional features included with the SELECT:

- 17" Light alloy wheels 20-spoke (subject to engine variant)
- Armrests for passengers
- Chrome grille
- Chrome interior package
- Comfort bench seat 1st and 2nd passenger row
- Comfort (eight-way adjustable) driver's seat
- Front and rear coloured bumpers
- Seat rail system
- TEMPMATIC air conditioning

From £40,545\*

\* Based on a Vito Tourer 114 SELECT L1.

### • 3 lengths available

- L1: 4,895mm
- L2: 5,140mm
- L3: 5,370mm

### • 1 transmission available

- 9G-TRONIC PLUS (automatic)

➤ [Arrange a test drive at your nearest Dealership](#)



Image shows the upgraded Light-alloy wheels - 7,5J x 18 ET 52 (Code R10).



The Mercedes-Benz Vito Tourer 5



# Colours and upholstery.



RETURN TO START

## Solid paints



Arctic white  
(Standard on the Vito Tourer)



Pebble grey



Jupiter red



Navy blue



Granite green

## Metallic paints



Hyacinth red



Brilliant silver



Obsidian black



Cavansite blue

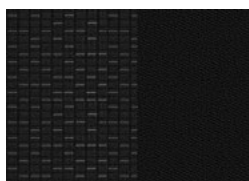


Dark Graphite grey

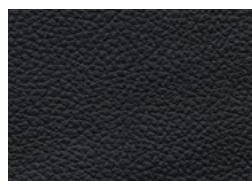


Selenite grey

## Interior upholstery



Black Caluma seat upholstery  
(Standard on the Vito Tourer)



Black leatherette seat upholstery

➤ [For paint pricing, see page 9](#)

➤ [For upholstery pricing, see page 13](#)

# Wheels.



RETURN TO START

Our upgraded wheel options include:

1. **16" Light alloy wheels 10-spoke** (RL5)
2. **17" Full wheel cover** (RD8)
3. **17" Light alloy wheels 20-spoke** (RK8)
4. **17" Light alloy wheels 5-spoke** (RL8)
5. **17" Light alloy wheels 5-twin spoke** (R1N)
6. **18" Light alloy wheels 5-twin spoke** (R10)
7. **18" Light alloy wheels 5-spoke** (R1P)
8. **19" Light alloy wheels 16-spoke** (RK3)
9. **19" Light alloy wheels 10-twin spoke** (R1Q)

Please note, more wheel options are available – see page 10 for more information. Consult your local Dealer for the full range of wheels available.

[Find your nearest Dealership](#)



# Equipment (standard and optional overview).



RETURN TO START



Every Vito Tourer model comes with a host of standard features, plus a range of optional equipment and packages you can add to enhance your van.

Over the next few pages, you'll see an overview of all the equipment and packages using the following key to highlight if they are standard, optional, equipment dependant or unfortunately, not available.

Key: ● Standard ○ Optional ◇ Equipment dependant option available — Not available

Equipment	Description	Option code	PRO	SELECT	Basic Price exc. VAT	Basic Price inc. VAT
<b>Upgrade packages</b>						
<b>Comfort</b>	<p><b>Bunk package</b> The Bunk package includes a folding 3-seater bench in the rear, which can be folded into an occasional bed with integrated drawers. The bed measures approx. 2.03 x 1.35m for compact models and 1.93 x 1.35m in the long version. The 3-seater bench has integrated three-point seat belts, and ISOFIX attachments Top Tether for all 3 seats. The following options will also be added: Comfort seats, front (SB1+SB2), Seat rail system with quick-locking (UR1), Santiago black fabric (VY4), Comfort overhead control panel (LC4) and Privacy glass, rear (W70); only available for L1 and L2 models.</p>	V9B	○	○	Please speak to your local Dealer for more information	
	<p><b>Table package</b> A folding table is installed in the first rear seat row. The table can be raised on its stem, and provides two additional stowage compartments when raised, includes two integrated cupholders. The table is mounted on two additional rails which are only installed if the table is ordered. Table package (V9A) must always be in conjunction with Bunk Package (V9B). The following options will also be added: Folding table (YE2), 12V plug socket in rear (ES2), 2 detachable cup holders in armrests (FG9), Stowage nets on seat backrests (SZ7/SZ8), 3-seater bench as luxury bunk, 2nd rear seat row (US3), Santiago black fabric (VY4), Black shaded glass in rear (W70). Only available on L2 models.</p>	V9A	○	○	£625.00	£750.00
<b>Mirrors</b>	<p><b>Mirror package</b> The Vito Mirror package uses automatically dimming mirrors and electrically folding outside mirrors to increase the driving comfort and driving safety.</p>	FP2	○	○	£370.00	£444.00
<b>Parking</b>	<p><b>Parking package</b> Includes PARKTRONIC and reversing camera (FR8). During parking manoeuvres PARKTRONIC informs the driver of the distance to detected obstacles with visual and acoustic signals. If reverse gear is engaged, the reversing camera also shows you the area immediately behind the vehicle on the multimedia system display.</p>	EZ5	○	○	£1,090.00	£1,308.00
<b>Security</b>	<p><b>Anti-theft protection package</b> Thatcham category 1 approved. Includes cab interior and load-space monitoring with double locks, battery back-up siren and tow-away protection as standard on all Vito models.</p>	FY1	○	○	£345.00	£414.00
<b>Trim and Upholstery</b>	<p><b>Chrome interior appointments package</b> The chrome interior package further enhances the look of the driver's and front-passenger's area with its trim elements on the dashboard and in the front doors.</p>	FP4	○	●	£140.00	£168.00

Changes to individual option availability and combinations may occur depending on vehicle specification choices and the continuing evolution and adaptation of our product range. These changes may not be immediately reflected in this document as they occur, but will be introduced at the next revision opportunity.



# Equipment (standard and optional overview).



RETURN TO START

Equipment	Description	Option code	PRO	SELECT	Basic Price exc. VAT	Basic Price inc. VAT
<b>Exterior Features</b>						
<b>Bodywork</b>	<b>Carrier bars</b>	D15	○	○	£165.00	£198.00
	<b>Chrome radiator grille</b> Only available in conjunction with painted bumpers (CM2).	FK2	○	●	£120.00	£144.00
	<b>Roof rails</b> Maximum load of 150kg, when supported by three carrier bars.	D12	○	○	£415.00	£498.00
<b>Doors</b>	<b>Electrically operated side loading doors</b> Not available in conjunction with sliding windows (W18+W19).	T55 + T56	○	○	£1,060.00	£1,272.00
	<b>Twin rear doors</b> Open up to 180°.	W50	○	○	£240.00	£288.00
	<b>Tailgate</b>	W65	●	●	£0.00	£0.00
<b>Fuel Tanks</b>	<b>57L capacity fuel tank</b>	KB6	●	●	£0.00	£0.00
	<b>70L capacity fuel tank</b>	KB5	○	○	£90.00	£108.00
	<b>Red diesel filler cap</b>	K56	○	○	£30.00	£36.00
	<b>Fuel filter with water separator</b> The fuel filter with water separator is able to remove the elevated water content from poor-quality diesel fuel and thereby increase the reliability of the engine.	KL5	○	○	£115.00	£138.00
<b>Paint</b>	<b>Pre-treated bumpers</b> The pre-treated surfaces facilitate the painting of the bumpers in the desired colour at a later date.	CM3	○	–	£125.00	£150.00
			–	○	£0.00	£0.00
	<b>Colour-coded front and rear bumpers</b>	CM2	○	●	£340.00	£408.00
	<b>Metallic or non-metallic optional paint colour</b> See page 8 for the range of colours available, or speak to your local Mercedes-Benz Van Dealer.	/	○	○	£610.00	£732.00
<b>Roof</b>	<b>Panoramic glass sunroof</b> Only available for L2 models with electric rear windows (W32).	D34	○	○	£2,510.00	£3,012.00
<b>Tyres</b>	<b>All-season tyres</b> Compared to summer tyres, all-season tyres excel with better traction in wintry road conditions.	RM0	○	○	£170.00	£204.00
	<b>Comfort tyres</b> Available for 17" + wheels	RM4	○	○	£0.00	£0.00
	<b>Mud and Slush (winter) tyres</b> Available for selected wheels. Please check with your Dealer for availability.	RM1	○	○	£160.00	£192.00

● Standard ○ Optional ◇ Equipment dependant option available – Not available

# Equipment (standard and optional overview).



RETURN TO START

Equipment	Description	Option code	PRO	SELECT	Basic Price exc. VAT	Basic Price inc. VAT
<b>Exterior Features (cont.)</b>						
Tyres (cont.)	<b>Summer tyres</b>	RM7	●	●	£0.00	£0.00
	<b>Tyres 205/65 R16</b>	RG1	○	●	£125.00	£150.00
	<b>Tyres 225/60 R16</b>	RG2	○	–	£285.00	£342.00
–			○	£170.00	£204.00	
Wheels	<b>16" Steel wheels</b> Wheel: 6.5 J x 16 ET 52 Tyres: 195/65 R 16 tyres (RG6) on 114 engines or 205/65 R 16 tyres (RG1) on 116 engines. Standard when S23 Double Co-Driver seat is removed	RS3	○	–	£0.00	£0.00
			○	–	£0.00	£0.00
	<b>17" Steel wheels</b> Wheel: 6.5 J x 17 ET 52 Tyres: 205/65 R 16 tyres (RG1)	RS7	●	–	£0.00	£0.00
	<b>16" Full wheel cover</b> Compatible with (RS3)	RD8	○	–	£90.00	£108.00
	<b>17" Full wheel cover</b> Compatible with (RS7)	RD8	○	–	£90.00	£108.00
	<b>16" Alloy wheels (10-spoke)</b> Wheel: 6.5 J x 16 ET 52 Tyres: 205/65 R16 tyres (RG1) Standard on SELECT 114 and 116 engines.	RL5	○	○	£630.00	£756.00
	<b>17" Alloy wheels (5-spoke)</b> Wheel: 7 J x 17 ET 51 Tyres: 225/55 R17 tyres (RG7)	RL8	○	○	£1,020.00	£1,224.00
	<b>17" Alloy wheels (5-twin spoke)</b> Wheel: 7.0 J x 17 ET 51 Tyres: 225/55 R17 (RG1)	R1N	○	○	£1,320.00	£1,584.00
	<b>17" Alloy wheels (20-spoke)</b> Wheel: 7 J x 17 ET 51 Tyres: 225/55 R17 tyres (RG7) Standard on SELECT 119 engine.	RK8	○	●	£1,020.00	£1,224.00
<b>18" Alloy wheels (5-spoke)</b> Wheel: 7.5 J x 17 ET 52 Tyres: 225/55 R18 tyres (RH4)	R1P	○	○	£1,810.00	£2,172.00	

● Standard ○ Optional ◇ Equipment dependant option available – Not available

# Equipment (standard and optional overview).



RETURN TO START

Equipment	Description	Option code	PRO	SELECT	Basic Price exc. VAT	Basic Price inc. VAT
<b>Exterior Features (cont.)</b>						
Wheels (cont.)	<b>18" Alloy wheels (5-twin spoke)</b> Wheel: 7.5 J x 18 ET 52 Tyres: 245/45 R18 tyres (RH4)	R10	○	○	£1,810.00	£2,172.00
	<b>19" Alloy wheels (5-twin spoke)</b> Bi-colour Wheel: 8 J x 19 ET 52 Tyres: 245/45 R19 tyres (RK1)	RL3	○	○	£1,385.00	£1,662.00
	<b>19" Alloy wheels (10-twin spoke)</b> Wheel: 8 J x 19 ET 52 Tyres: 245/45 R19 tyres (RK1)	R1Q	○	○	£2,295.00	£2,754.00
	<b>19" Alloy wheels (16-spoke)</b> Wheel: 8 J x 19 ET 52 Tyres: 245/45 R19 tyres (RK1)	RK3	○	○	£2,145.00	£2,574.00
<b>Interior Features</b>						
Flooring	<b>Front carpets</b>	V44	○	●	£55.00	£66.00
	<b>Rear carpets</b>	V33	○	●	£90.00	£108.00
	<b>Velour floor mats</b> The black velour floor mats visually enhance the cockpit and underscore the elegant, sporty wellness ambience in the vehicle.	VL2	○	○	£55.00	£66.00
Heating and ventilation	<b>Auxiliary hot water heater with timer</b> The hot-water auxiliary heater indulges driver and passengers right from the start of the journey with cosy warmth.	H12	○	○	£585.00	£702.00
	<b>Auxiliary heat exchanger in rear passenger compartment</b> Only available in conjunction with TEMPMATIC air-conditioning (HH9).	H13	○	○	£380.00	£456.00
	<b>Electrical auxiliary demister heating elements</b> The electric heater booster ensures a stronger and faster heating output for the vehicle interior in low outside temperatures when the engine is cold.	HZ0	●	●	£0.00	£0.00
	<b>Pollen filter</b> The pollen filter keeps even the smallest of particles out of the interior and can therefore protect against allergic reactions.	HF2	○	—	£50.00	£60.00
	<b>Remote control for auxiliary hot water heater with timer</b> The radio remote control allows the hot-water auxiliary heater to be switched on and off from a distance, ensuring pleasant temperatures in the interior already when getting in.	HY1	○	○	£270.00	£324.00

● Standard ○ Optional ◇ Equipment dependant option available — Not available



# Equipment (standard and optional overview).



RETURN TO START

Equipment	Description	Option code	PRO	SELECT	Basic Price exc. VAT	Basic Price inc. VAT
<b>Interior Features (cont.)</b>						
Heating and ventilation (cont.)	<b>TEMPMATIC air-conditioning</b> Semi-automatic temperature control including outside air temperature display.	HH9	○	●	£1,020.00	£1,224.00
	<b>Rear TEMPMATIC air-conditioning</b> Only available in conjunction with TEMPMATIC air-conditioning (HH9) or THERMOTRONIC climate control (HH4).	HZ7	○	○	£795.00	£954.00
	<b>THERMOTRONIC climate control</b> Automatic climate control including air-conditioning and outside air temperature display for Tourer PRO models.	HH4	○	—	£1,740.00	£2,088.00
	—		○	£725.00	£870.00	
Seating	<b>Comfort driver's seat</b> Comfort driver seat with inboard armrest and 4-way adjustable headrest.	SB1	○	●	£120.00	£144.00
	<b>Comfort co-driver's seat</b> Comfort driver and co-driver seat with inboard armrests and 4-way adjustable headrests. This deletes the double co-driver seat and therefore limits the cab area to two occupants.	SB2	○	○	£95.00	£114.00
	<b>Comfort bench seat 1st passenger row</b> Removable comfort bench seat with tilting/removable outer seat and outer armrests. Backrests are individually adjustable for recline angle. The bench has a two section seat cushion and a three section backrest and can also be folded into the package position to create additional cargo space. Not available in conjunction with Dual co-driver seat (S23) for crew models.	US4	○	●	£370.00	£444.00
	<b>Comfort bench seat 2nd passenger row</b> Removable comfort bench seat with tilting/removable outer seat and outer armrests. Backrests are individually adjustable for recline angle. The bench has a two section seat cushion and a three section backrest and can also be folded into the package position to create additional cargo space. Only available in combination with Comfort bench seat first passenger row (US4).	US5	○	●	£370.00	£444.00
	<b>Comfort bench seat 2nd passenger row as luxury bunk</b>	US3	○	○	£370.00	£444.00
	<b>High-comfort swivelling driver's seat</b> Comfort co-driver's seat with inboard armrests and 4-way adjustable headrests.	SB5	○	○	£305.00	£366.00
	<b>High-comfort swivelling co-driver's seat</b> Comfort co-driver seat with inboard armrests and 4-way adjustable headrests.	SB6	○	○	£305.00	£366.00
	<b>Single co-driver's seat</b> Includes automatic seat belt recognition and airbag deactivation function.	S09	○	—	£0.00	£0.00
	<b>Dual co-driver's seat</b>	S23	●	●	£270.00	£324.00
	<b>Electrically adjustable driver's seat</b>		SF1	○	—	£1,145.00
—				○	£1,050.00	£1,260.00
<b>Electrically adjustable co-driver's seat</b>		SF2	○	—	£1,145.00	£1,374.00
			—	○	£1,050.00	£1,260.00

● Standard ○ Optional ◇ Equipment dependant option available — Not available

# Equipment (standard and optional overview).



RETURN TO START

Equipment	Description	Option code	PRO	SELECT	Basic Price exc. VAT	Basic Price inc. VAT
<b>Interior Features (cont.)</b>						
Seating (cont.)	<b>Heated driver's seat</b>	H16	○	○	£160.00	£192.00
	<b>Heated dual co-driver's seat</b>	H15	○	○	£220.00	£264.00
	<b>Heated driver's and co-driver's seats (combined)</b> Not available in conjunction with dual co-driver seat (S23).	H16 H15	○	○	£375.00	£450.00
	<b>Lumbar support, driver's seat</b> Only available in conjunction with comfort seat (SB1/SB2) or comfort seats, electronically adjustable (SF1/SF2). Not available with leatherette trim (VU9).	SE5	○	○	£115.00	£138.00
	<b>Lumbar support, co-driver's seat</b> Only available in conjunction with comfort seat (SB1/SB2) or comfort seats, electronically adjustable (SF1/SF2). Not available with leatherette trim (VU9).	SE4	○	○	£115.00	£138.00
	<b>Seat rail system</b> Allows adjustable seating bench positions. Only available in conjunction with comfort bench seats (US4 and US5).	UR1	○	●	£570.00	£684.00
<b>Steering Wheel</b>	<b>Multifunctional leather steering wheel</b> Height and rake adjustable.	CL3	●	●	£0.00	£0.00
<b>Storage</b>	<b>2 detachable cup holders, in rear armrests</b>	FG9	○	○	£55.00	£66.00
	<b>Armrests for crew/passenger compartment</b> Fitted to the outer side of the crew/passenger compartment bench seat.	U73	○	●	£75.00	£90.00
	<b>Footwell centre console with stowage compartment</b> Not available in conjunction with dual co-driver seat (S23).	FF1	○	○	£75.00	£90.00
	<b>Footwell centre console with 1-DIN slot</b> Not available in conjunction with dual co-driver seat (S23). Note blanking plate for 1-DIN slot not included.	FF2	○	○	£75.00	£90.00
	<b>Parcel shelf</b> The load compartment shelf creates a second stowage space that makes the load compartment flexible and enables convenient loading and unloading.	YG4	○	○	£580.00	£696.00
	<b>Stowage net on driver's seat backrest</b>	SZ7	○	○	£35.00	£42.00
	<b>Stowage net on co-driver's seat backrest</b>	SZ8	○	○	£35.00	£42.00
<b>Table</b>	<b>Folding table</b> The practical, flexibly adjustable folding table offers passengers a flat table surface for working, eating or playing. Only available on L2.	YE2	○	○	£580.00	£696.00
<b>Trim and upholstery</b>	<b>Black Caluma seat upholstery</b> Breathable and hardwearing.	VY2	●	●	£0.00	£0.00
	<b>Black leatherette seat upholstery</b> Not available with swivelling Comfort Seats (SB5 and SB6).	VU9	○	○	£165.00	£198.00

● Standard ○ Optional ◇ Equipment dependant option available — Not available

# Equipment (standard and optional overview).


[RETURN TO START](#)

Equipment	Description	Option code	PRO	SELECT	Basic Price exc. VAT	Basic Price inc. VAT
<b>Technology, Software &amp; Electrics</b>						
<b>Alternator</b>	<b>Alternator 14V / 250A</b>	M60	○	○	£660.00	£792.00
<b>Audio</b>	<b>Audio 30</b> 7.8 cm (7 inch) touchscreen DAB+ radio includes Smartphone Integration via Apple® CarPlay and Android Auto and also the Bluetooth® interface with audio streaming and hands-free function for making phone calls while driving with minimal distraction. Includes 2 USB ports.	E3C	●	●	£0.00	£0.00
	<b>Audio 40</b> 7.8 cm (7 inch) touchscreen DAB+ radio with integrated Navigation. Includes Smartphone Integration via Apple® CarPlay and Android Auto and Bluetooth® interface with audio streaming and hands-free function for making phone calls while driving with minimal distraction. Includes 2 USB ports.	EA4	○	○	£420.00	£504.00
<b>Battery</b>	<b>Heavy duty battery</b> Up rated with 95Ah. Standard for 114CDI, 116CDI and 119CDI models.	ED4	●	●	£0.00	£0.00
	<b>Additional battery, for auxiliary power supply</b> Capacity will be the same as the selected vehicle battery.	E28	○	○	£250.00	£300.00
<b>Electrical</b>	<b>Parameterisable special module (PSM)</b> Facilitates programming of special vehicle functions. Please speak to your Mercedes-Benz Vans Dealer for more information.	ED5	○	○	£310.00	£372.00
	<b>12V Plug socket in trunk / load compartment</b>	ES2	○	○	£60.00	£72.00
<b>Keys</b>	<b>Additional vehicle keys with remote function</b> Four keys are supplied with the vehicle in total.	FZ9	○	○	£115.00	£138.00
<b>Tachograph</b>	<b>Tachograph (digital)</b> Not available in conjunction with Dual co-driver seat (S23). Tachograph manufacturer Continental VDO.	JD1	○	○	£800.00	£960.00
<b>Driver's Assistance &amp; Safety</b>						
<b>Airbags</b>	<b>Driver's thorax airbag</b>	SH1	●	●	£0.00	£0.00
	<b>Co-driver's thorax airbag</b> Becomes standard with removal of S23 Double Co-driver seat.	SH2	○	○	£0.00	£0.00
	<b>Window airbags</b> Fitted for driver and co-driver, from A-pillar to B-pillar.	SH9	●	●	£0.00	£0.00
	<b>Window airbags, A-D-pillar</b> Available for Tourer in L2 vehicle length.	SH8	○	○	£445.00	£534.00
<b>Driver's Assistance</b>	<b>Active Brake ASSIST</b> Can detect the danger of a collision with the vehicle ahead, stationary traffic and pedestrians by reacting with a visual and audible warning-braking automatically if there is no driver reaction.	BA3	●	●	£0.00	£0.00

● Standard ○ Optional ◇ Equipment dependant option available — Not available



# Equipment (standard and optional overview).



RETURN TO START

Equipment	Description	Option code	PRO	SELECT	Basic Price exc. VAT	Basic Price inc. VAT
<b>Driver's Assistance &amp; Safety (cont.)</b>						
	<b>Active Distance ASSIST DISTRONIC</b> Automatically maintains the distance to vehicles in front. The system accelerates the vehicle by itself and brakes it with a maximum of half the vehicle's braking power in order to maintain a safe distance.	ET4	○	○	£865.00	£1,038.00
	<b>Attention ASSIST</b> ATTENTION ASSIST function can detect typical signs of drowsiness and warn the driver.	JW8	●	●	£0.00	£0.00
	<b>Comfort overhead control panel</b> LED interior lighting including cab downlighting and co-/driver reading lamps; also includes a convenient spectacles compartment.	LC4	●	●	£0.00	£0.00
	<b>Crosswind ASSIST</b> Crosswind ASSIST detects track offset caused by strong crosswind gusts in due time and helps the driver to stay in lane.	JA8S	●	●	£0.00	£0.00
	<b>Cruise Control</b> Includes speed limiter function. Operated via a lever ergonomically positioned on the left of the steering column.	MS1	●	●	£0.00	£0.00
	<b>Headlight assistant</b> Automatically switches the vehicle lighting between daytime-running lights and low beam headlights. Standard for 119CDI models includes Heat insulating glass (H20) in all factory fitted glazing.	LA2	●	●	£0.00	£0.00
	<b>Lane Keeping ASSIST</b> Warns the driver if lane markings are crossed unintentionally.	JW5	○	○	£475.00	£570.00
	<b>Rain sensor</b> The rain sensor automatically regulates the wiping frequency of the windscreen wipers with activated intermittent wiping, which makes things easier for the driver. Includes headlight assistant (LA2) and heat insulating glass (H20).	JF1	●	●	£0.00	£0.00
<b>Parking</b>	<b>Reversing camera</b>	FR8	○	○	£515.00	£618.00
	<b>Reversing warning device</b> The reverse warning alarm warns pedestrians and other road users audibly of the reversing vehicle and thereby enhances their safety.	JW0	○	○	£100.00	£120.00
<b>Safety Equipment</b>	<b>First aid kit</b>	Y10	○	○	£0.00	£0.00
	<b>Fire extinguisher 1kg</b>	YF7	○	○	£130.00	£156.00
	<b>PRE-SAFE</b> The PRE-SAFE® anticipatory occupant protection system can detect critical driving situations at an early stage and initiate preventive protection measures.	JP1	○	○	£350.00	£420.00
	<b>Warning triangle</b>	Y44	○	○	£45.00	£54.00

● Standard ○ Optional ◇ Equipment dependant option available — Not available

# Equipment (standard and optional overview).



RETURN TO START

Equipment	Description	Option code	PRO	SELECT	Basic Price exc. VAT	Basic Price inc. VAT
<b>Driver's Assistance &amp; Safety (cont.)</b>						
<b>Lighting</b>	<b>Blinker lights on rear of roof</b> The additional turn signal lamps on rear of roof improve the visibility of the vehicle, thus enhancing perceptual safety.	L84	○	○	£150.00	£180.00
	<b>Halogen front fog lights</b> Not available for vehicles fitted with LED Intelligent Light System (LG2).	L16	○	○	£215.00	£258.00
	<b>Illuminated vanity mirror in sun visors</b>	FS5	●	●	£0.00	£0.00
	<b>Interior and ambient lighting</b>	LP2	○	●	£240.00	£288.00
	<b>LED Intelligent Light System</b> Automatically adapts light intensity appropriately to weather, lighting and speed. Integrated High Beam Assist automatically adjusts the high and low beam to the traffic situation. The cornering function automatically pivots headlamps and illuminates static LED cornering lights into upcoming bends to ensure maximum visibility. Includes Rain sensor (JF1), Headlight assistant (LA2), Heat insulating glass (H20).	LG2	○	○	£1,630.00	£1,956.00
	<b>Lights in grab handle in rear</b>	LC3	○	—	£65.00	£78.00
<b>Loading &amp; Towing</b>						
<b>Towing</b>	<b>Pre-installation for trailer towing electrics</b> A separate trailer control module, trailer socket connector and workshop activity to parameterise the vehicle instrument cluster will be required to activate trailer electrics, costs for which are not included in this option price. Please check with the relevant authority. Does not include towbar. Please note: does not include Tachograph. For commercial use a tachograph may be legally required when towing equipment is fitted. Please check with the relevant authority.	E57	○	○	£225.00	£270.00
	<b>Fixed towbar head</b> Towing cross member with single 13-pin trailer electrical socket and fixed towball. Maximum towing capacity depends on vehicle specification, please check with your retailer for final capacity and gross combination weight. Does not include tachograph – for commercial use a tachograph may be legally required when towing equipment is fitted. Please check with the relevant authority.	Q22	○	○	£370.00	£444.00
	<b>Removable towbar</b> Towing cross member with single 13-pin trailer electrical socket and removable towball. Maximum towing capacity depends on vehicle specification, please check with your retailer for final capacity and gross combination weight. Does not include tachograph – for commercial use a tachograph may be legally required when towing equipment is fitted. Please check with the relevant authority.	Q50	○	○	£715.00	£858.00
	<b>Up-rated towing capacity to 2.5T</b> Includes 13-pin electrical interface. Please check maximum permissible gross train weight with your local Mercedes-Benz Vans Dealer.	QA4	○	○	£75.00	£90.00

● Standard ○ Optional ◇ Equipment dependant option available — Not available

# Equipment (standard and optional overview).



RETURN TO START

Equipment	Description	Option code	PRO	SELECT	Basic Price exc. VAT	Basic Price inc. VAT
<b>Mirrors &amp; Windows</b>						
<b>Mirrors</b>	<b>Electrically folding door mirrors</b> Only available in conjunction with Electrically heated and adjustable door mirrors (F68).	F64	○	○	£210.00	£252.00
	<b>Heated, electrically adjustable wing mirrors</b> Mirror heating reduces condensation in cold weather and prevents icing-up of the mirrors. The exterior mirrors are heated automatically upon vehicle start when the outside temperature is low or when the rear defrost function is activated.	F68	●	●	£0.00	£0.00
<b>Windows</b>	<b>Black-tinted windows in rear</b> 90% window tint offers attractive thermal and privacy protection. Applies to all windows after the B-pillar.	W70	○	○	£515.00	£618.00
	<b>Convenience opening and closing</b> Convenience opening and closing of the front windows via remote central locking.	FZ8	○	○	£45.00	£54.00
	<b>C-D pillar windows</b> Includes tinted glass—lightly tinted, green (H20).	W29	●	●	£0.00	£0.00
	<b>C-D pillar windows, electrically opening</b>	W32	○	○	£345.00	£414.00
	<b>Heat-insulating glass</b> Windscreen (laminated glass), side windows and rear window (single-pane safety glass) are tinted green, reducing the sunlight's heating effect on the interior.	H20	●	●	£0.00	£0.00
	<b>Heated windscreen washer system</b>	F48	○	○	£200.00	£240.00

● Standard ○ Optional ◇ Equipment dependant option available — Not available



# Engine and gearbox.



RETURN TO START

Engine specifications	PRO/SELECT		
	114CDI	116CDI	119CDI
Fuel	Diesel		
Engine designation	OM654		
Mixture preparation/ injection method	Common-rail direct injection, 1,600bar max. injection pressure		
Cylinder arrangement	4, in-line		
Cubic capacity	1,950cc		
EU exhaust emission standard	Euro 6		
Output, max.	134hp	160hp	187hp
	100kW	120kW	140kW
	136PS	163PS	190PS
	@ 3,800rpm		
Torque, max.	330Nm @ 1,200-2,400rpm	380Nm @ 1,400-2,400rpm	440Nm @ 1,400-2,600rpm
	57L (70L with option KB5 - fuel tank, large)		
Fuel tank capacity	57L (70L with option KB5 - fuel tank, large)		
AdBlue® capacity	24L		
Diesel Particulate Filter [DPF]	●	●	●
9G-TRONIC automatic gearbox	●	●	●
Driven Axle	Rear		
Alternator	14V / 200A with Alternator Management (battery charged during braking and overrun)		
Battery - DGS	12V / 95Ah (AGM)		

● Standard ○ Optional — Not available

# Fuel consumption, performance and CO<sub>2</sub> emissions.



RETURN TO START

Model	WLTP CO <sub>2</sub> emissions (g/km)					WLTP Fuel Consumption (l/100km/MPG)				
	Combined	Low-speed	Medium-speed	High-speed	Extra high-speed	Combined	Low-speed	Medium-speed	High-speed	Extra high-speed
<b>Tourer - PRO</b>										
114 RWD Tourer L1	184	234	181	158	188	7.0/ <b>40.3</b>	8.9/ <b>31.7</b>	6.9/ <b>40.9</b>	6.0/ <b>47.0</b>	7.2/ <b>39.2</b>
114 RWD Tourer L2	184	235	182	159	189	7.0/ <b>40.3</b>	9.0/ <b>31.3</b>	7.0/ <b>40.3</b>	6.1/ <b>46.3</b>	7.2/ <b>39.2</b>
114 RWD Tourer L3	185	236	184	160	189	7.1/ <b>39.7</b>	9.0/ <b>31.3</b>	7.0/ <b>40.3</b>	6.1/ <b>46.3</b>	7.2/ <b>39.2</b>
<b>Tourer - SELECT</b>										
114 RWD Tourer L1	188	240	187	162	191	7.2/ <b>39.2</b>	9.2/ <b>30.7</b>	7.1/ <b>39.7</b>	6.2/ <b>45.5</b>	7.3/ <b>38.7</b>
116 RWD Tourer L1	184	234	181	158	188	7.0/ <b>40.3</b>	8.9/ <b>31.7</b>	6.9/ <b>40.9</b>	6.0/ <b>47.0</b>	7.2/ <b>39.2</b>
119 RWD Tourer L1	194	250	192	165	198	7.4/ <b>38.1</b>	9.5/ <b>29.7</b>	7.3/ <b>38.7</b>	6.3/ <b>44.8</b>	7.6/ <b>37.1</b>
114 RWD Tourer L2	189	241	188	163	192	7.2/ <b>39.2</b>	9.2/ <b>30.7</b>	7.2/ <b>39.2</b>	6.2/ <b>45.5</b>	7.3/ <b>38.7</b>
116 RWD Tourer L2	184	235	182	159	189	7.0/ <b>40.3</b>	9.0/ <b>31.3</b>	7.0/ <b>40.3</b>	6.1/ <b>46.3</b>	7.2/ <b>39.2</b>
119 RWD Tourer L2	196	253	195	167	200	7.5/ <b>37.6</b>	9.7/ <b>29.1</b>	7.4/ <b>38.1</b>	6.4/ <b>44.1</b>	7.6/ <b>37.1</b>
114 RWD Tourer L3	189	243	189	164	193	7.2/ <b>39.2</b>	9.3/ <b>30.3</b>	7.2/ <b>39.2</b>	6.2/ <b>45.5</b>	7.3/ <b>38.7</b>
116 RWD Tourer L3	185	236	184	160	189	7.1/ <b>39.7</b>	9.0/ <b>31.3</b>	7.0/ <b>40.3</b>	6.1/ <b>46.3</b>	7.2/ <b>39.2</b>
119 RWD Tourer L3	195	253	195	167	199	7.5/ <b>37.6</b>	9.7/ <b>29.1</b>	7.4/ <b>38.1</b>	6.4/ <b>44.1</b>	7.6/ <b>37.1</b>

All figures are based on a standard specification. The choice of wheels and transmission may affect CO<sub>2</sub> emissions and corresponding Road Fund Licence. The indicated values were determined according to the prescribed measurement method – Worldwide Harmonised Light Vehicle Test Procedure (WLTP). Figures shown may include options which are not available in the UK. Figures shown are for comparability purposes; only compare with other vans tested to the same technical procedures. Figures may not reflect real life driving results, which will depend upon a number of factors including factory-fitted options, accessories fitted (post registration), variations in weather, driving styles and vehicle load. Further information about the test used to establish fuel consumption and CO<sub>2</sub> figures can be found at <https://www.mercedes-benz.co.uk/vans/en/WLTP>

# Weights and payloads.



RETURN TO START

Model	Gross Vehicle Weight (kg)	Unladen weight (kg)	Payload (kg)*	Gross Train Weight (kg)
<b>Tourer - PRO</b>				
114 RWD Tourer L1	3,200	2,182	1,018	5,200
114 RWD Tourer L2	3,200	2,207	993	5,200
114 RWD Tourer L3	3,200	2,232	968	5,200
<b>Tourer - SELECT</b>				
114 RWD Tourer L1	3,200	2,299	901	5,200
116 RWD Tourer L1	3,200	2,299	901	5,200
119 RWD Tourer L1	3,200	2,299	901	5,200
114 RWD Tourer L2	3,200	2,324	876	5,200
116 RWD Tourer L2	3,200	2,324	876	5,200
119 RWD Tourer L2	3,200	2,356	844	5,200
114 RWD Tourer L3	3,200	2,349	851	5,200
116 RWD Tourer L3	3,200	2,349	851	5,200
119 RWD Tourer L3	3,200	2,349	851	5,200

All figures are based on a standard specification. The choice of wheels and transmission may affect CO<sub>2</sub> emissions and corresponding Road Fund Licence. The indicated values were determined according to the prescribed measurement method – Worldwide Harmonised Light Vehicle Test Procedure (WLTP). Figures shown may include options which are not available in the UK. Figures shown are for comparability purposes; only compare with other vans tested to the same technical procedures. Figures may not reflect real life driving results, which will depend upon a number of factors including factory-fitted options, accessories fitted (post registration), variations in weather, driving styles and vehicle load. Further information about the test used to establish fuel consumption and CO<sub>2</sub> figures can be found at <https://www.mercedes-benz.co.uk/vans/en/WLTP>

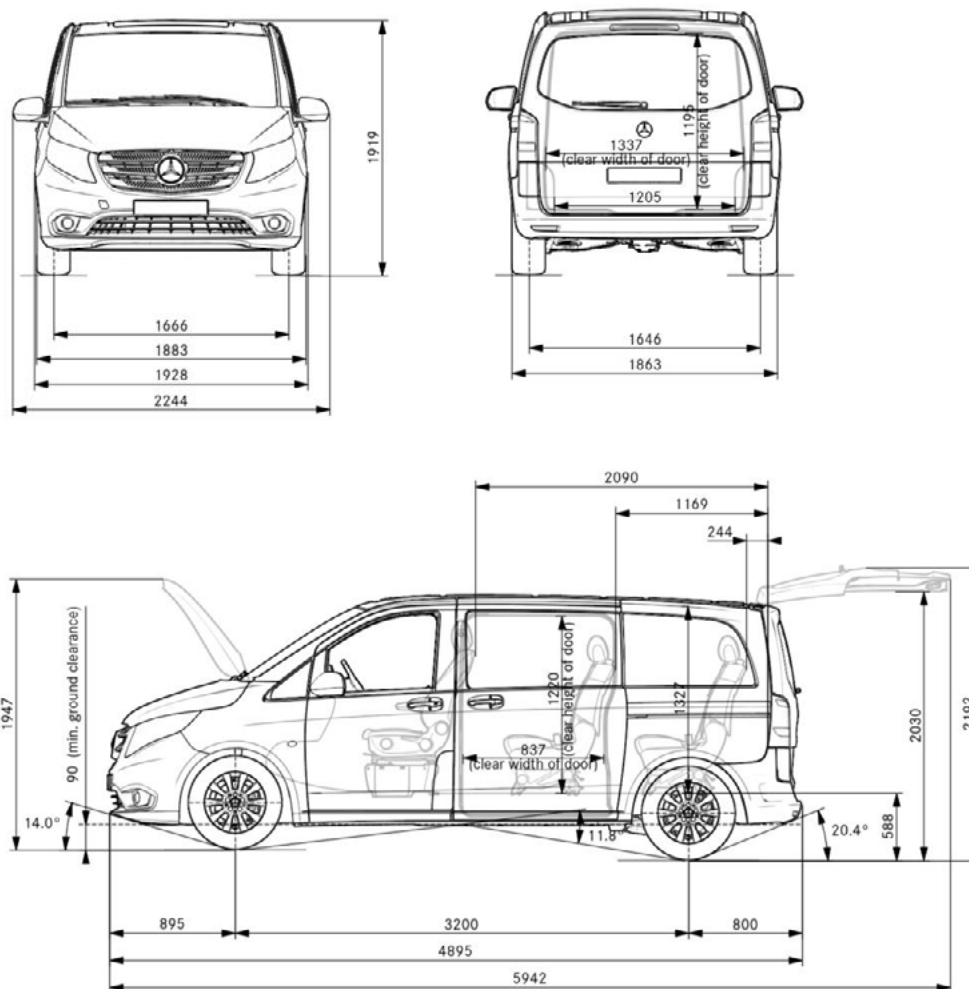
# Dimensions.



RETURN TO START

## Vito Tourer L1

<b>Wheelbase</b>	Wheelbase length	3,200mm
	Turning circle	11.8m
	Track circle	11m
	Front track width	1,666mm
	Rear track width	1,646mm
<b>Vehicle</b>	Length	4,895mm
	Height (unladen)	1,910mm
	Width (inc. wing mirrors)	2,249mm
	Ground clearance	90-116mm
<b>Load compartment</b>	Length	2,408mm
	Max. width	1,552mm
	Width between wheel arches	1,205mm
	Height	1,297mm



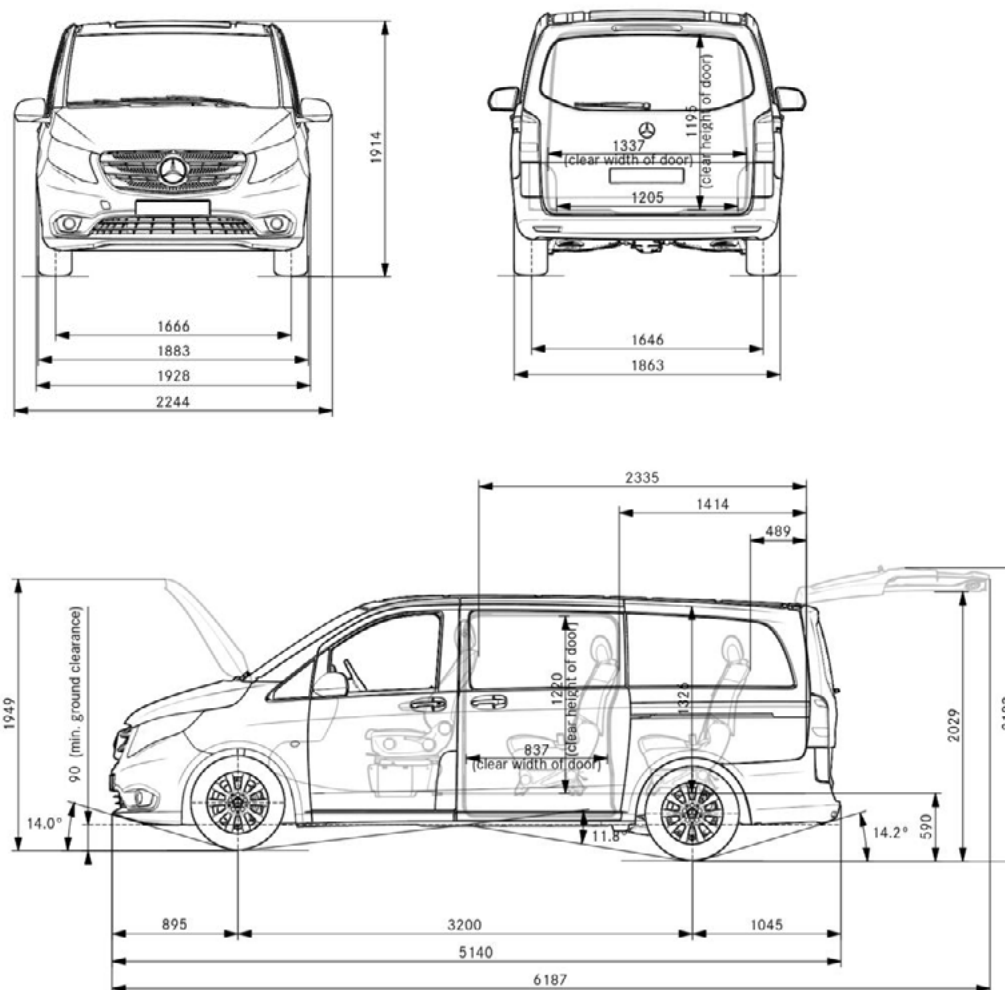
# Dimensions.



RETURN TO START

## Vito Tourer L2

<b>Wheelbase</b>	Wheelbase length	3,200mm
	Turning circle	11.8m
	Track circle	11m
	Front track width	1,666mm
	Rear track width	1,646mm
<b>Vehicle</b>	Length	5,140mm
	Height (unladen)	1,910mm
	Width (inc. wing mirrors)	2,249mm
	Ground clearance	90-116mm
<b>Load compartment</b>	Length	2,653mm
	Max. width	1,552mm
	Width between wheel arches	1,205mm
	Height	1,297mm





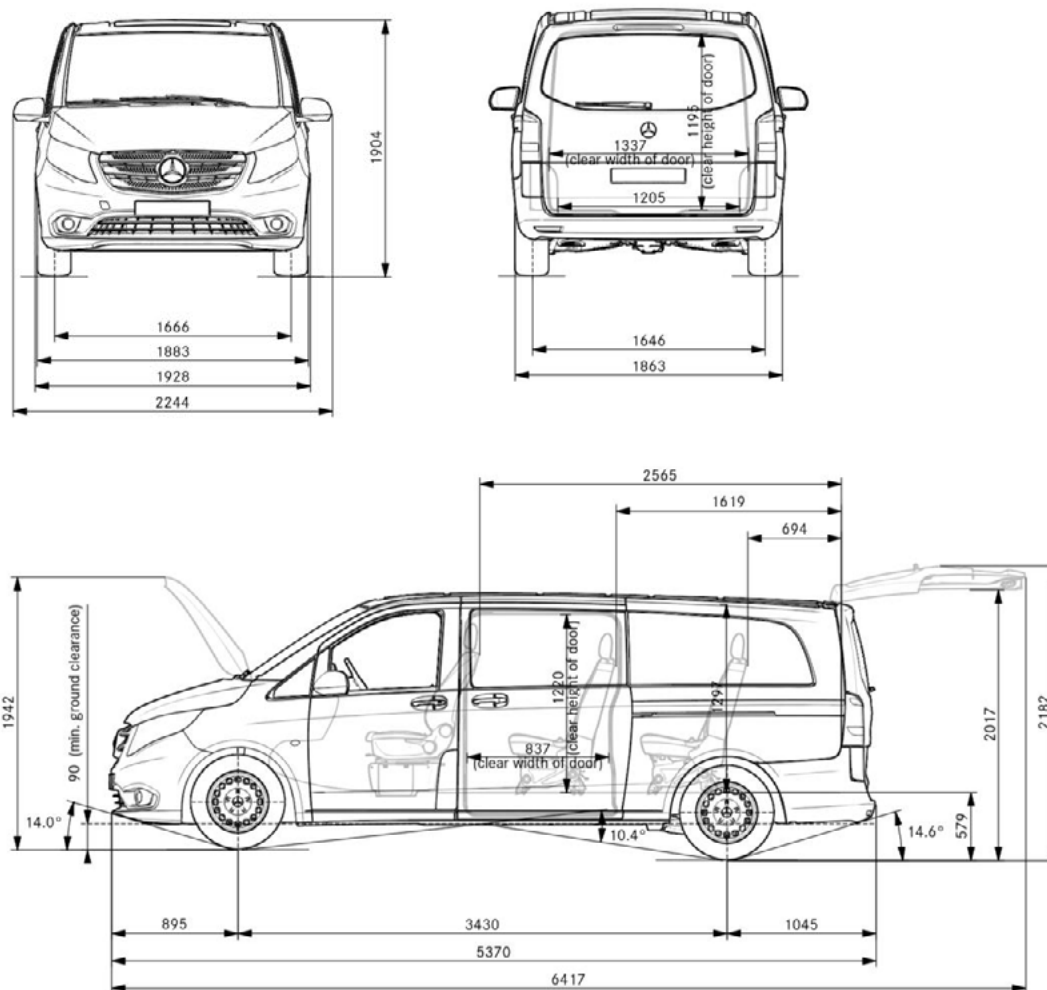
# Dimensions.



RETURN TO START

## Vito Tourer L3

<b>Wheelbase</b>	Wheelbase length	3,430mm
	Turning circle	11.8m
	Track circle	11m
	Front track width	1,666mm
	Rear track width	1,646mm
<b>Vehicle</b>	Length	5,370mm
	Height (unladen)	1,910mm
	Width (inc. wing mirrors)	2,249mm
	Ground clearance	90-116mm
<b>Load compartment</b>	Length	2,883mm
	Max. width	1,552mm
	Width between wheel arches	1,205mm
	Height	1,297mm



# List prices.



RETURN TO START

Model	Transmission	Basic Recommended Retail Price (Ex. VAT)	Basic Recommended Retail Price (Inc. VAT)
<b>Tourer – PRO</b>			
114 RWD Tourer L1	9G-TRONIC (auto)	£37,025	£44,430
119 RWD Tourer L1	9G-TRONIC (auto)	£41,075	£49,290
114 RWD Tourer L2	9G-TRONIC (auto)	£37,510	£45,012
114 RWD Tourer L3	9G-TRONIC (auto)	£38,140	£45,768
<b>Tourer – SELECT</b>			
114 RWD Tourer L1	9G-TRONIC (auto)	£40,545	£80,654
116 RWD Tourer L1	9G-TRONIC (auto)	£41,965	£50,358
119 RWD Tourer L1	9G-TRONIC (auto)	£44,580	£53,496
114 RWD Tourer L2	9G-TRONIC (auto)	£41,020	£49,224
116 RWD Tourer L2	9G-TRONIC (auto)	£42,445	£50,934
119 RWD Tourer L2	9G-TRONIC (auto)	£45,060	£54,072
114 RWD Tourer L3	9G-TRONIC (auto)	£41,660	£49,992
116 RWD Tourer L3	9G-TRONIC (auto)	£43,075	£51,690
119 RWD Tourer L3	9G-TRONIC (auto)	£45,695	£54,834

This document is for guidance only and must be used in conjunction with a configuration tool prior to final specification decisions and vehicle quotations being prepared and accepted. List prices are quoted ex-factory unless otherwise stated. Delivery charges excluding VAT will be added to model prices quoted in this document. Prices based on standard finish paint choice. Mercedes-Benz Vans UK and authorised Dealers reserve the right to alter specification and vary prices without notice. The availability of options may depend on the chosen base vehicle and other optional equipment specified, and should be confirmed with your Mercedes-Benz Vans Dealer prior to order placement. VAT is calculated at the standard rate of 20%. Mercedes-Benz Vans UK Ltd, Tongwell, Milton Keynes MK15 8BA.

# Mercedes-Benz Approved Used vans.

## Get used to more...



### More choice. More confidence. More quality – and more added extras.

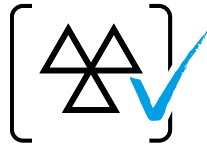
As a Mercedes-Benz Approved Used customer, you'll have complete peace of mind as every van offers the same commitment to quality and workmanship as new and comes with:



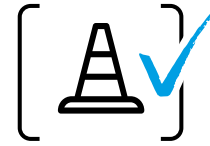
Minimum 12-month warranty\*  
PLUS the option of monthly top-ups, up to 24 months\*



Free MOT test failure cover\*\*  
covering you for £1,500



Minimum 3 months MOT



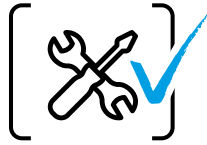
Free 24/7 breakdown cover  
and roadside assistance^



Free 7-day driveaway  
van insurance^^



Comprehensive  
multi-point vehicle check



Discounted  
service plans

### ▶ [View our Dealer Networks Approved Used van stock](#)

\* Warranty eligible up to 200,000 miles on approved used Mercedes-Benz Vans with less than 150,000 miles at point of sale. Top ups are to a maximum of 24 months. For full T&Cs, please speak to your preferred sales representative. \*\* MOT cover redeemable per 12-months warranty. £1,500 claims limit. For more information, please speak to your preferred sales representative. ^ Free for 12 months initially and renewed at each service, if serviced by Mercedes-Benz according to service intervals for up to 30 years from when the vehicle was first registered. For a full list of exclusions and all product terms please visit [mbvans.co.uk/mobilovan](http://mbvans.co.uk/mobilovan) ^^ Available on single vehicle policies only and applicable on Vehicles up to 3.5t only. For full terms and conditions, please consult your local Dealer. Mercedes-Benz Van Insurance is a trading name of Mercedes-Benz Insurance Services UK Limited. Prices are correct at time of going to press 07/2021. All prices are subject to any fiscal or legislative changes.



Approved  
Used



## What is an Approved Used van?

- Is no older than 6 years old
- Has less than 150,000 miles on the clock
- Is eligible for one of our flexible finance plans

▶ [Find more information and our latest Approved Used offers](#)

## Ready to go electric?

▶ [Find our latest Approved Used Electric offers](#)

The Mercedes-Benz Vito Tourer

25



RETURN TO START

# Finance options.

## Get an agreement that suits you with Mercedes-Benz Finance.

At Mercedes-Benz Finance we understand what it takes to run a modern-day business. Because of this, we have a number of finance options ready to suit your business needs.

### Agility

A flexible way of financing a vehicle over a fixed term. At the start of your agreement, decide on your deposit amount, expected annual mileage and how long you want the agreement to last.

- You'll have fixed regular payments meaning you can easily budget
- Payments are only based on a part of the vehicle's value, keeping your payments lower
- You're in control: At the end of the agreement you can decide to purchase your vehicle, return it, or part-exchange it for a new one.

### Hire Purchase

A great choice if you want to own the vehicle outright. At the start of your agreement, decide on your deposit amount and how long you want the agreement to last, and we'll work out your monthly payments.

- The monthly payments are not based on annual mileage
- You have the option to have a balloon payment at the end of the agreement, which will lower your monthly payments
- When you've paid all the monthly repayments and Purchase Activation Fee, the vehicle is yours to keep.

### Operating Lease

For those who want to drive a Mercedes-Benz over a fixed term, without the commitment of taking full ownership. Decide on your advance rental amount, expected annual mileage, and how long you want the agreement to last.

- Once all rentals are paid, you simply hand your vehicle back
- You only repay part of the vehicle's value, keeping your monthly rentals lower
- For business customers, rentals are allowable against taxable profits (proportionally).

### Contract Hire

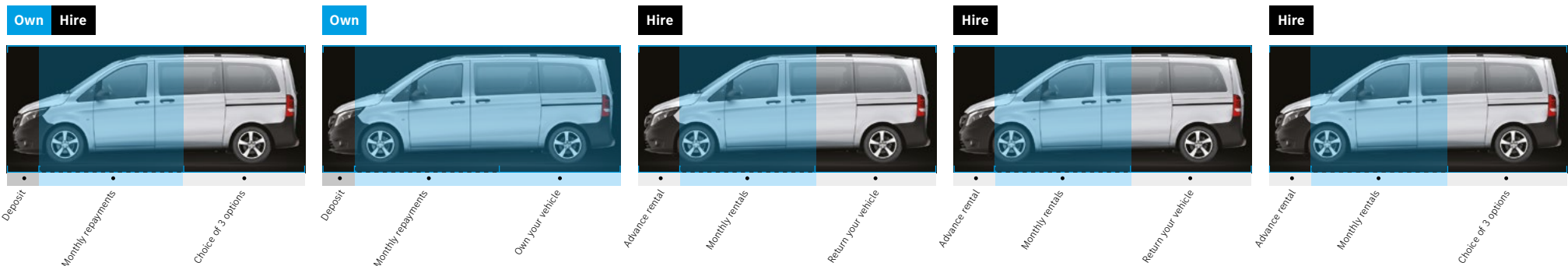
Gives you the ability to enjoy driving a Mercedes-Benz without taking on full ownership. Decide on your advance rental amount, expected annual mileage how long you want the agreement to last, and any servicing options.

- The monthly rentals include the cost of the Vehicle Excise Duty
- You only repay part of the vehicle's value, keeping your monthly rentals lower
- For business users, VAT is reclaimable depending on your usage (proportionally).

### Finance Lease

Hire the vehicle for a fixed period without the option of ownership. Pay an agreed amount upfront, and decide if you wish to include a balloon payment at the end of your agreement. This lowers your monthly rentals.

- The fixed regular rentals enable you to easily budget, and are not based on annual mileage
- The vehicle is an asset on the balance sheet, therefore tax allowances may be deducted from taxable profits
- At the end of your agreement, there is an option to extend for an agreed period by paying a 'peppercorn' payment. This is equal to one month's rental per annum.



▶ [For more information about our finance options](#)

# Service24: Demand more

## The most comprehensive Aftercare package – for businesses that demand more.

Our 120-strong Dealer network works around the clock to service and maintain your vans and keep your business moving. It all adds up to more value, more flexibility and more confidence that you'll only find at an authorised Mercedes-Benz Dealer.



### › Flexible servicing and maintenance

Book your service online or by telephone, and as well as a standard 'drop and go' service with a courtesy van, you'll also get:

- Early bird, late night and weekend slots
- Mobile service
- Overnight service
- Collect & deliver service
- Express 1hr service
- Electric van service.

[Find out more about service and repairs](#)

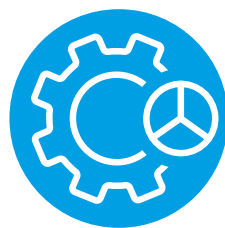


### › Flexible ways to pay and save

With fixed, transparent national pricing there are no surprises with our services and repairs – plus you can fix, spread and reduce your service and maintenance costs, and ease your cashflow at the same time, with a payment plan.

- Pay as You Go
- ServiceCare Maintenance
- ServiceCare Flex (specifically for fleets)
- ServiceCare Complete.

[Find out more about service options](#)



### › 3-year unlimited mileage warranty

Available on every new van, all service and maintenance – and any work required – is covered by your 3-year unlimited mileage warranty, and is only undertaken by Mercedes-Benz trained technicians using Mercedes-Benz GenuineParts.

[Find out more about warranties](#)



### › Free breakdown cover & roadside assistance\*

Every van comes with free Europe-wide breakdown cover – MobiloVan. And with 3 years' cover on new vehicles for driver mishaps, no one goes further to keep your business moving.

- Trained technicians using only Mercedes-Benz GenuineParts
- Forward travel of load and crew is covered
- Driver mishap cover for the first 3 years, including out of charge cover or empty fuel tanks.

[Find out more about MobiloVan](#)

\*For a full list of exclusions and all product terms please visit [www.mercedes-benz.co.uk/vans/en/Owners/MobiloVan](http://www.mercedes-benz.co.uk/vans/en/Owners/MobiloVan)

The Mercedes-Benz Vito Tourer

27



