



Mercedes-Benz Trucks Genuine Accessories

Actros / Antos / Arocs

Mercedes-Benz
Trucks you can trust



Genuine Accessories for your genuine Mercedes-Benz.

In the extensive range of Mercedes-Benz Genuine Accessories – making a multitude of individual design options possible. The Arocs, in contrast, is and remains the specialist for heavy-duty use and is reliable and robust – not only on the construction site, but also on the road. And the Antos is a versatile distribution haulage truck designed to quickly, conveniently and easily meet the ever-increasing challenges in daily use.

We also provide a multitude of individual design options with the extensive range of Genuine Accessories. This makes upgrading easy, for example with detachable parts in chrome and high-quality stainless steel. Also inside the vehicle, our Genuine Accessories leave no wish unfulfilled. We offer a wide range of large and small options to make your working day better, safer, more comfortable and more efficient.

Did you already know that? Our comprehensive product tests ensure that every Mercedes-Benz Genuine Accessory meets our high quality standards. From electromagnetic compatibility to summer and winter testing up to the crash test – only accessory products that pass each of the required tests meet the requirements of practical situations. And only then do they meet yours, too.

Our sophisticated logistics ensure every Mercedes-Benz accessory product is available for you as quickly as possible at your dealer – and, if you wish, including installation.

You will receive detailed advice from your Mercedes-Benz Service Partner. We look forward to meeting you!

Overview of the series abbreviations used in the catalog:

Ac5:	Actros 5, manufacture year from 2019, model designation 963 (L cab) with code V1A+V2B, model designation 963 (S/M cab) with code V1O+V2F
Ac4:	Actros 4, manufacture year 2011–2019, model designation 963 with code V1A+V2A
Ac3:	Actros 3, manufacture year 2008–2011, model designation 930–934 with code XV6
Ac2:	Actros 2, manufacture year 2002–2008, model designation 930–934 with code XV7
Ac1:	Actros 1, manufacture year 1996–2002, model designation 950–954
An:	Antos, manufacture year 2012–2019, model designation 963, code V1C
Ar5:	Arocs 5, manufacture year from 2019, model designation 964 with code V1B+V2J or model designation 964 with code V1I+V3L
Ar4:	Arocs 4, manufacture year 2013–2019, model designation 964 with code V1B+V2I or model designation 964 with code V1I+V3K

Content

Product tests 4-5

Exterior 6-45



Interior 47-84



Electrics/electronics 86-120



Electromagnetic compatibility testing

Comprehensive product tests are standard for Mercedes-Benz Genuine Accessories.

With Mercedes-Benz Genuine Accessories, tested quality is coming to the streets: in rigorous tests, each product must show that it will withstand the daily demands in and on a truck. And this is already the case during new vehicle development. Only then will the products come onto the market as Mercedes-Benz Genuine Accessories. This way, you can always rely on high quality and longevity, which makes your work more pleasant, more comfortable and more efficient. On the following pages, we present you with three of our product tests in further detail – and the great advantages you will benefit from.

The electromagnetic compatibility test: For interference-free working and communicating.

Electronic devices are thoroughly tested for electromagnetic compatibility (EMC). The test is conducted based on two criteria: immunity to interference and emitted interference. On the one hand, this ensures the interference-free operation of the accessory product. On the other hand, you can trust that there will be no interference with electronic devices or in radio frequencies from Mercedes-Benz genuine accessories.

Your advantages at a glance:

- Interference-free operation of the electronic devices in the vehicle
- More range for your radio – enjoy longer, undisturbed reception of your favorite station
- Interference-free operation of vehicle-internal control units and systems

EMC testing



EMC test in a laboratory that is especially shielded against external electromagnetic interferences.

Product tests

Durability test

The interaction of accessories and vehicle is tested in the durability test. Hydropulse test stands and rough road tracks simulate pot holes and road conditions found worldwide. By varying the vehicle speed and vehicle load, a wide variety of work assignments are simulated. Therefore, the accessory product is tested over a longer period of time under the load conditions found in real life. In the crash test, the Mercedes-Benz Genuine Accessories are subjected to the hardest test. This test analyzes the behavior during an accident – passive safety must be ensured even under these extreme conditions.

Your advantages at a glance:

- Longevity thanks to sturdy and high-quality material
- Accessories that are optimally geared towards the vehicle
- Tested and approved for the demands of everyday life



Bending and breaking test: Roof lamp brackets in the crash test.



Hydropulse test stand for simulating pot holes and rough road conditions.

Winter and summer testing

Winter and summer pose extreme challenges for the vehicle and material. This is why Mercedes-Benz Genuine Accessories must ensure optimum function at all times in strict trials at temperatures of $-40\text{ }^{\circ}\text{C}$ to $+40\text{ }^{\circ}\text{C}$. Winter testing is performed in Scandinavia and summer testing is performed in Southern Europe, in each case on special vehicle testing sites and circuits. In addition to different road surfaces, vehicles must withstand inclines and as well as endurance tests under the maximum vehicle load.

Your advantages at a glance:

- Optimum function even at extreme temperatures
- Long service life even at maximum vehicle loads
- A consistently high quality is ensured under all conditions



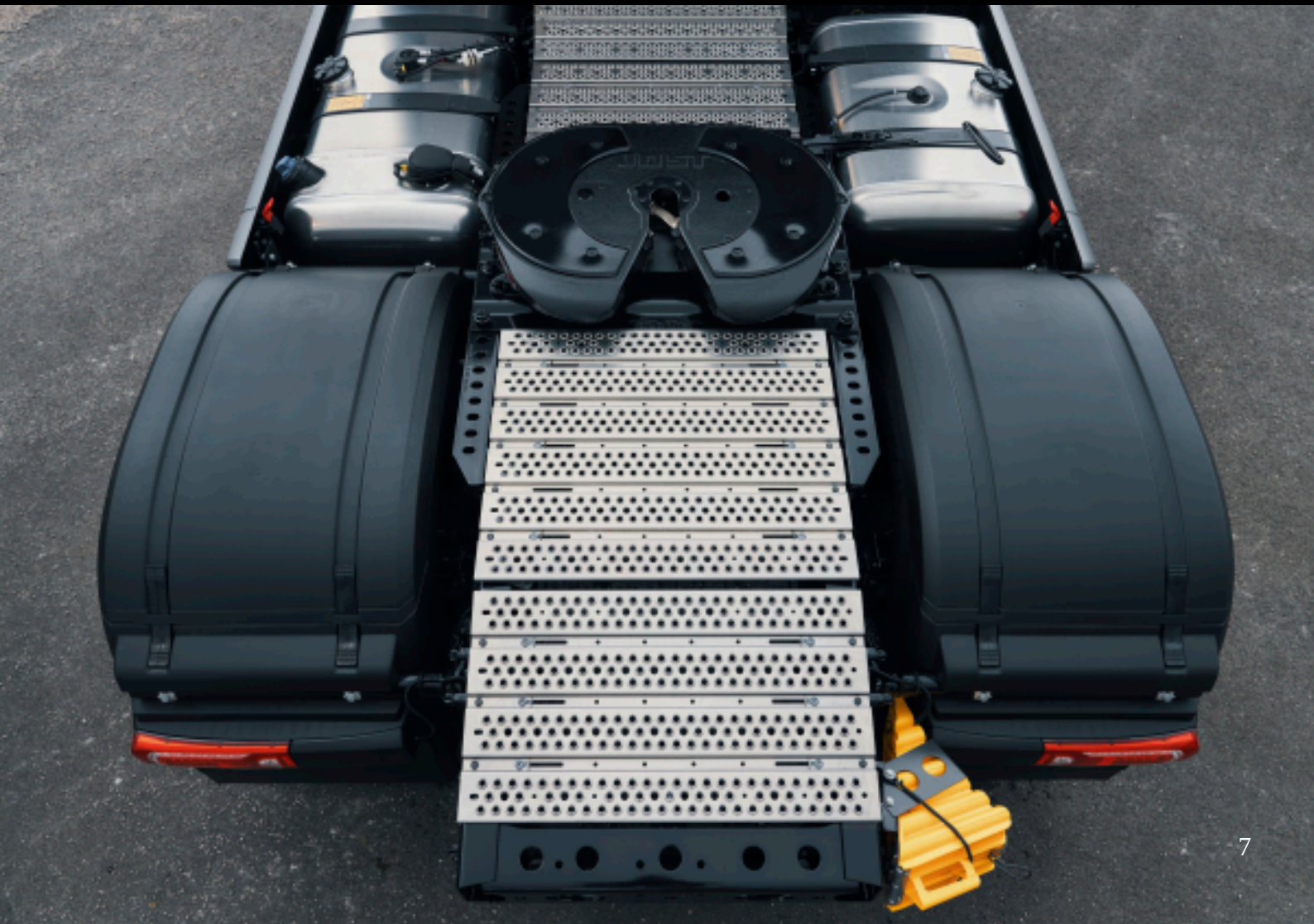
Test vehicles of the Mercedes-Benz winter testing in Scandinavia.

The exterior.



Simply look better.

With the Actros, Antos and Arocs, you are excellently prepared for your work. Give your vehicles that personal touch, for example with detachable parts in chrome and stainless steel.



Illuminated Mercedes star



B6 683 0036



B6 683 0036



B6 683 0036, B6 683 0041

Shining detail: Activate the Mercedes star with white backlighting at the touch of a button for an even more sensational look.

Product benefits Contribution to independent design and individualization of the vehicle

Technical data LED lighting with an output of 1.9 Watts and lens, power consumption of approx. 82 mA

Package contents Installation kit for retrofitting comprises star incl. LED, switch, cable set and mounting material

Area of use The illuminated Mercedes star is permitted for use exclusively on private property. It may not be used on public roads. For example, it may not be used in public parking spaces.

Note Due to statutory regulations, deviations from the usage of the illuminated Mercedes star described here are possible in individual countries. Statutory regulations in individual countries shall be observed

Article designation	Vehicle	Part number
Illuminated Mercedes star incl. installation kit for cab width 2.5 m (code F2H)	Ac5, Ac4, An, Ar5, Ar4	B6 683 0036
Illuminated Mercedes star incl. installation kit for cab width 2.3 m (code F2G)	Ac5, Ac4, An, Ar5, Ar4	B6 683 0041

LED daytime running lights (code L1I)



[B6 683 0031](#)

Less maintenance, less non-operational time, even more safety: The LED daytime running lamps replace the use of low beams during daylight hours.

Product benefits	Long service life (over 10,000 hours); low energy consumption (approx. 10 W)
Function	Automatically activated when the engine is started and deactivated when the standing lights or low beams are switched on
Color	White
Package contents	1 pair for driver and co-driver's side
Property	The LED spots are arranged in two separate strips of five each next to the front fog lamps, the cover is made of glass
Note	Prerequisite, code L1H (Halogen front fog lamp), not for codes F2L, F2M, L1B, L1N, VIC, daytime running lights are disabled in the main headlamp

Article designation	Vehicle	Part number
LED daytime running lights	Ac4	B6 683 0031
Cable set for LED daytime running lights	Ac4	B6 683 0025

Sun visor with high beam headlamp



The four additional round high beam headlamps with modern, energy-efficient LED technology for the sun visor combine design and technology. They provide illumination that parallels daylight, offering crucial support for the driver's vision. The integration of the headlamps into the sun visor means there is a measurable benefit in aerodynamics and weight (compared to a headlamp bracket with additional headlamps). No more fastening points on the roof are required.

Product benefits	Energy-efficient LED high beam headlamps; integrated with custom fit into the sun visor; for optimum illumination of the driving and work surface
Technical data	24 Volts, light reference number 10, diameter 90 mm of the lens, ECE-R1 12 S01/SAE J566, FMVSS108
Cab	2500 mm (code F2H)
Package contents	1 piece respectively
Material	Cast aluminum housing, impact-resistant polycarbonate lens (headlamps); coated, angled sheet steel (bracket); series-identical part with cutouts for the headlamps (sun visor); ABS/PMMA (cover)
Additional information	Modular solution consisting of genuine sun visor with cutouts for four LED high beam headlamps, headlamp brackets, covers and wiring harness set
Note	The national legal requirements apply when mounting additional headlamps; high beam headlamps and work lamps are ECE-tested

Article designation	Vehicle	Part number
LED high beam headlamp, round (requirement 4 pieces)	Ac5, Ac4, Ar5, Ar4	A 956 820 06 39
Wiring harness	Ac5, Ac4, Ar5, Ar4	B6 683 0047
Cover for 2 LED high beam headlamps each (requirement 2 pieces)	Ac5, Ac4, Ar5, Ar4	B6 752 0297
Bracket, Big-/GigaSpace (requirement of 2 pieces)	Ac5, Ac4, Ar5, Ar4	B6 752 0295
Sun visor, Big-/GigaSpace, left-hand drive vehicle	Ac5, Ac4, Ar5, Ar4	B6 752 0298
Sun visor, Big-/GigaSpace, right-hand drive vehicle	Ac5, Ac4, Ar5, Ar4	B6 752 0293
Holder, StreamSpace (requirement 2 pieces)	Ac5, Ac4, Ar5, Ar4	B6 752 0296
Sun visor, StreamSpace, left-hand drive vehicle	Ac5, Ac4, Ar5, Ar4	B6 752 0299
Sun visor, StreamSpace, right-hand drive vehicle	Ac5, Ac4, Ar5, Ar4	B6 752 0294

Welcome Light



[A 000 826 05 04](#)

This is how you greet good friends. The Mercedes-Benz logo is projected onto the street as you enter or exit the vehicle. Integrated in the side turn signals, the Welcome Light can be retrofitted in Actros and Arocs with a flat floor.

Product benefits	Distinctive eye-catcher as you enter or exit the vehicle
Content of parts kit	Additional flashing light left and right, 2 x cable sets and cable ties
Validity	Only in combination with code F2A (cab with a flat floor)
Installation location	Entrance area

Article designation	Vehicle	Part number
Welcome Light retrofit	Ac5, Ac4, Ar5, Ar4	A 000 826 05 04

Chrome slats, front



B6 752 0180



B6 752 0180

Stylish appearance: The chrome slats in special 3D look on the trim grille lend the dynamic design of the Actros an even more expressive and high-quality look.

Product benefits	Visual highlight of the front; customization of the vehicle
Material	High-gloss chrome-plated plastic
Cab	2500 mm (code F2H)
Body floor height	765 mm (code F2P)
Installation	For gluing onto the trim grille

Article designation	Vehicle	Part number
Chrome slats (1-4), 6-piece	Ac5, Ac4	B6 752 0170
Chrome slats (1-5), 11-piece	Ac5, Ac4	B6 752 0180
Chrome slats top, 2-piece	Ac5, Ac4	B6 752 0174
Second chrome slat, 2-piece	Ac5, Ac4	B6 752 0175
Third chrome slat, 1-part	Ac5, Ac4	B6 752 0176
Fourth chrome slat, 1-piece	Ac5, Ac4	B6 752 0177
Fifth chrome slat, 5-piece	Ac5, Ac4	B6 752 0178

Chrome/stainless steel/look

Roof lamp bracket



B6 752 0186



B6 752 0187



B6 752 0188



B6 752 0189

Spot on: The headlamp brackets are perfectly matched to the shape of the respective cab, and form the ideal basis for up to four additional headlamps. For even better illumination of the driving and working area in front of the vehicle and an individual look.

Product benefits	ECE-tested; approved for the European market; resistant to environmental influences, corrosion, stone chipping
Material	High-quality stainless steel
Dimensions	Pipe diameter 60 mm
Package contents	With drawn-in cable set; with 4 welded shackles from screwing on additional headlamps, incl. mounting material, for connecting with pre-installation, additional headlamps, roof (code L9C)
Note	When mounting and using roof lamp brackets with additional headlamps please observe the country specific legal requirements

Article designation	Vehicle	Part number
ClassicSpace roof lamp bracket (code F2U)	Ac5, Ac4, An, Ar5, Ar4	B6 752 0186
BigSpace roof lamp bracket (code F2V)	Ac5, Ac4, Ar5, Ar4	B6 752 0187
GigaSpace roof lamp bracket (code F2X)	Ac5, Ac4	B6 752 0188
StreamSpace roof lamp bracket (code F2W)	Ac5, Ac4, Ar5, Ar4	B6 752 0189

Chrome/stainless steel/look

Roof lamp bracket rotating beacon



B6 683 0035

Chrome/stainless steel/look

The rotating beacon on the cab roof indicates transports whose dimensions or weights require special consideration.

Product benefits Low power consumption (10 W) thanks to LED technology; GGVS/ADR approved; all-round function without moving parts; very low installation height; impact-resistant and dirt-resistant smooth light cover; systems of protection: IP67, IPx9k

Installation Mount of the Mercedes-Benz roof lamp brackets by means of separately available adapter plate

Technical data Operating voltage 10-30 V; total current consumption 0.7 A

Diameter 165 mm

Color Orange

Overall height Approx. 130 mm

Note Carrying rotating beacons mounted on the vehicle is reserved for priority road users and special-purpose vehicles

Article designation	Vehicle	Part number
LED rotating beacon	Ac5, Ac4, Ar5, Ar4	B6 683 0035
Roof lamp bracket adapter plate	Ac5, Ac4, Ar5, Ar4	B6 752 0155
Cable duct angular screw	Ac5, Ac4, Ar5, Ar4	B6 752 0198

Roof lamp bracket, additional headlamps



B6 683 0039



B6 683 0038

Make your star shine brighter: The additional headlamps enhance the appearance of the vehicle and ensure better visibility.

Installation	For all Mercedes-Benz roof lamp brackets
Package contents	1 piece
Note	The national legal regulations for attaching additional headlamps are valid; high beam headlamps are ECE-tested

Work lamps

For better illumination of the working surface in front of the vehicle. Additional headlamp in modern clear glass look.

Product benefits	Impact-resistant and sturdy housing; flexible holding fixture; chrome ring
Technical data	H1 bulb; power absorption capacity 24 Volts/70 Watt; light reference number 37.5; diameter 22 cm

Article designation	Vehicle	Part number
Work lamps	Ac5, Ac4, An, Ar5, Ar4	B6 683 0039

High-beam headlamp

High-beam headlamp with installed 24 V bulb for attachment to the roof lamp bracket.

Product benefits	Impact-resistant and sturdy housing; high-boost-reflector for uniform and ideal illumination of the roadway; flexible hold systems, chrome ring
Technical data	H1 bulb; power absorption capacity 24 V/70 W; light reference number 17.5; diameter 22 cm

Article designation	Vehicle	Part number
High beam headlamp without position lamp	Ac5, Ac4, An, Ar5, Ar4	B6 683 0038

Roof lamp bracket, additional headlamps



B6 683 0033



B6 683 0033



B6 683 0034

Chrome/stainless steel/look

Installation For all Mercedes-Benz roof lamp brackets

Package contents 1 piece

Note The national legal regulations for attaching additional headlamps are valid; high beam headlamps are ECE-tested

High beam headlamp with LED position lamps

Lighting performance: Powerful high beam headlamp with 6 high-performance LEDs and striking night design. The ideal supplement for better light output.

Product benefits High-boost reflector for even and ideal illumination of the roadway through the newest computer development; with flexible holding fixture; high beam headlamp with chrome ring; impact-resistant and sturdy housing

Technical data H1 bulb; power absorption capacity 24 Volts/70 Watt; light reference number 17.5; diameter 22 cm

Article designation	Vehicle	Part number
High beam headlamp with LED position lamps	Ac5, Ac4, An, Ar5, Ar4	B6 683 0033

High beam headlamp with LED ring

Strong light that you can rely on. High beam headlamps with LED ring. High Boost Reflector for even and ideal illumination of the roadway. Impact-resistant and sturdy housing.

Product benefits High efficiency for optimized light distribution; high beam headlamp with chrome ring

Material Reflector vapor-coated with ultra-pure aluminum, weatherproofed

Technical data H1 bulb; power absorption capacity 24 Volts/70 Watt; light reference number 17.5; diameter 22.2 cm

Article designation	Vehicle	Part number
High beam headlamp with LED ring	Ac5, Ac4, An, Ar5, Ar4	B6 683 0034

Roof lamp bracket, additional headlamps



B6 683 0042, B6 683 0043



B6 683 0043

Installation	For all Mercedes-Benz roof lamp brackets
Package contents	1 full LED high beam headlamp (incl. installation device), cover, installation instructions
Note	The national legal regulations for attaching additional headlamps are valid; high beam headlamps are ECE-tested

Full-LED high beam headlamp

Make your star shine brighter: The additional headlamps enhance the appearance of the vehicle and ensure better visibility.

Product benefits	With chrome ring; impact-resistant and sturdy housing; high-boost reflector for even and ideal illumination of the roadway; with flexible holding fixture
-------------------------	---

Technical data	Power absorption capacity 24 Volts/70 Watt; light reference number 17.5; diameter 23 cm
-----------------------	---

Article designation	Vehicle	Part number
Full LED high beam headlamp, black/chrome	Ac5, Ac4, An, Ar5, Ar4	B6 683 0042
Full-LED high-beam headlamp, chrome/chrome	Ac5, Ac4, An, Ar5, Ar4	B6 683 0043

Chrome/stainless steel/look

Roof lamp bracket, additional headlamps



Chrome/stainless steel/look

Installation For all Mercedes-Benz roof lamp brackets

Package contents 1 Halogen high beam headlamp with LED perimeter light, mounting material, installation instructions

Note The national legal regulations for attaching additional headlamps are valid; high beam headlamps are ECE-tested

Rectangular headlamp

Rectangular high beam headlamp for mounting onto headlamp bracket. The additional LED position lamp with six high-performance LEDs provides a bluish-white light in xenon look. This leads to significantly improved discernibility of the vehicle, offers greater safety and even looks good too.

Product benefits High-boost reflectors specially developed for the square shape offer the highest possible light output

Housing Black plastic housing, chrome ring

Technical data H7 bulb; power absorption capacity 24 Volts/70 Watt; light reference number 37.5; width 24.7 cm; height 14.1 cm

Note Six LEDs for the standing lights; H7 bulb for high beam

Article designation	Vehicle	Part number
Rectangular headlamp	Ac5, Ac4, An, Ar5, Ar4	B6 683 0037

Exterior

Decorative foils



Radiant star: The oversized star decorative foil for the sidewall of the vehicle provides a completely unique appearance that can't be missed.

Product benefits	For customization of the vehicle
Material	3M-foil contour punched, ready to transfer foil-clad
Dimensions	Max. Diameter 2070 mm
Color	Available in silver and anthracite
Installation	Bonding is carried out using the wet bonding method

Article designation	Vehicle	Part number
Decorative foil "Star", silver, left	Ac5, Ac4	B6 782 0035
Decorative foil "Star", silver, right	Ac5, Ac4	B6 782 0036
Decorative foil "Star", anthracite, left	Ac5, Ac4	B6 782 0037
Decorative foil "Star", anthracite, right	Ac5, Ac4	B6 782 0038



[B6 782 0035](#)

Decorative foils



B6 782 0009



B6 782 0000



B6 782 0001

Clear commitment: Decorative foil with „Actros“ lettering for the side deflector.

Product benefits	To customize the vehicle; easy adhesive mounting; film can also be adhered when wet
Color	Silver anthracite
Package contents	Kit for driver's and co-driver's side

Article designation	Vehicle	Part number
Decorative foil, "Actros" for side deflectors	Ac5, Ac4	B6 782 0009

Hot stuff: The flame pattern. The high-quality Mercedes-Benz decorative foils give your truck cab an individual appearance.

Product benefits	To customize the vehicle; easy adhesive mounting; film can also be adhered when wet
Color	Available in red and silver
Package contents	Kit for driver's and co-driver's side

Article designation	Vehicle	Part number
Decorative foil "Flame pattern", red	Ac5, Ac4	B6 782 0000
Decorative foil "Flame pattern", silver	Ac5, Ac4	B6 782 0001

Exterior

Air horns



[B6 684 8640](#)

Full 2-tone sound: The air horns on the cab roof are a powerful audible warning system.

Product benefits Increased road safety through better acoustic perception by other road users

Material	Stainless steel
Dimensions	Horn length approx. 55 and 64 cm
Package contents	Set, comprising two horns incl. covers

Article designation	Vehicle	Part number
Air horn set	Ac5, Ac4, An, Ar5, Ar4, At4, At3, At2, At1, Ax3, Ax2, Ax1	B6 684 8640

Chrome/stainless steel/look

Stainless steel steps



Step by step: With the stainless steel steps with anti-slip surfaces, not only can you get in easier, but you can also enhance your vehicle's look.

Product benefits	For the optical upgrade of the entrance; series fit
Cab	2500 mm (code F2H)
Material	High-quality stainless steel
Installation	Simple replacement of the original step
Package contents	4 treads on each side, incl. stainless steel screw attachment and stainless steel sheet nuts
Note	Only for Actros long-distance haulage. Homologation in the respective markets must be observed

B6 752 0162



B6 752 0162

Article designation	Vehicle	Part number
Stainless steel steps, four steps, for driver's or co-driver's side	Ac5, Ac4	B6 752 0162

Chrome/stainless steel/look

Stainless steel front bar



B6 752 0152

Sovereign appearance: The robust stainless steel front with vehicle-specific shape emphasizes the distinctive appearance of the vehicle.

Product benefits	For customization of the vehicle; front protection systems offer additional frontal impact protection for motor vehicles
Cab	2500 mm (code F2H)
Material	High-quality stainless steel
Diameter	Pipe diameter 60 mm
Weight	35 kg
Installation	On the towing device
Package contents	1 front bar, mounting material incl. mounts at the towing eyes, incl. 2 stainless steel brackets for mounting high beam headlamps, Technical Inspection Association report, installation instructions, information label (when tilting the cab). The front bar is supplied without a cable set
Note	Only for Actros long-distance haulage. Homologation in the respective markets must be observed.

Article designation	Vehicle	Part number
Stainless steel front bar	Ac5, Ac4 (long-distance haulage only)	B6 752 0152

Stainless steel slats, front



B6 752 0192



B6 752 0191

Chrome/stainless steel/look

More brilliance and a very personal note. After attaching the stainless steel slats to the trim grille, you will draw attention during every drive.

Product benefits	For visual upgrade of the vehicle front; customization
Cab	2300 mm (code F2G)
Body floor height	765 mm (code F2P) and 600 mm (code F2N) as well as flat floor (code F2A) and engine tunnel
Material	High quality stainless steel, material thickness approx. 1 mm
Installation	For gluing onto the trim grille

Article designation	Vehicle	Part number
Stainless steel slats, front (code F2A+code F2G+code F2P)	Ac5, Ac4	B6 752 0190
Stainless steel slats, front (code F2A+code F2H+code F2P)	Ac5, Ac4	B6 752 0191
Front stainless steel slats (code F2G + code F2N + engine tunnel)	Ac5, Ac4, An	B6 752 0192

Stainless steel decorative strips, front spoiler



B6 752 0172

Bright line management: The stainless steel trims to be stuck to the front spoiler emphasize this and ensure an even more individual character.

Product benefits	Underlines the contour of the fairing and sets accents
Material	High-quality stainless steel
Installation	For gluing onto the front spoiler

Article designation	Vehicle	Part number
Outer front spoiler stainless steel trim strips, pair (left and right)	Ac5, Ac4	B6 752 0193
Center front spoiler stainless steel trim strip	Ac5, Ac4, An	B6 752 0194
Stainless steel trim strip set for front spoiler, consisting of B6 752 0193 and B6 752 0194	Ac5, Ac4	B6 752 0172

Stainless steel strips front-end flap



B6 752 0265

The high-gloss polished stainless steel strips for the front-end flap give your vehicle a completely individual feel and create a strong look.

Product benefits	Visual highlight of the vehicle front; for the customization of the vehicle
Cab	2500 mm (code F2H)
Body floor height	765 mm (code F2P)
Material	High-quality stainless steel
Installation	To stick on the front-end flap (tape not included)

Article designation	Vehicle	Part number
Stainless steel front-end flap, 5-piece	Ac5, Ac4	B6 752 0265

Exterior

Chrome border, front



[B6 752 0275](#)

Bright chrome frames the vehicle front of the Actros.

Product benefits Visual highlight of the front; customization of the vehicle

Material High-gloss chrome-plated plastic

Cab 2500 mm (code F2H)

Body floor height 765 mm (code F2P)

Installation For glueing to the vehicle front

Article designation	Vehicle	Part number
Chrome border, front	Ac5, Ac4	B6 752 0275

Chrome/stainless steel/look

Stainless steel trim strip, front end



B6 752 0279

The high-quality stainless steel trim strip between the headlamps decorates the front of the vehicle in the area of the front apron.

Product benefits For a visual upgrade of the vehicle front; underlines the contour of the front apron and sets accents

Material High-quality stainless steel

Cab all cabs

Installation Adhesive attachment

Article designation	Vehicle	Part number
Stainless steel trim strip front apron	Ac5, Ac4	B6 752 0279

Mercedes star, cover, black



B6 752 0305

The black cover for the Mercedes star makes the vehicle front even more expressive.

Product benefits Customization of the vehicle front

Material Base material made of 0.6 mm thick stainless steel sheet, painted with three coats of paint

Area of use The cover is screwed under the Mercedes star to the front-end flap

Cab 2500 mm (code F2H)

Article designation	Vehicle	Part number
Cover for Mercedes star, painted black	Ac5, Ac4, Ar5, Ar4	B6 752 0305

Stainless steel trim parts, louvers, side trim



B6 752 0195

Distinctive details: The louvers for the side panels convey power and aerodynamics and intensify the individual character of the Actros and Antos.

Product benefits	For visual enhancement of the vehicle through a customized, more dynamic overall impression
Material	High quality stainless steel, material thickness approx. 1 mm
Installation	For gluing onto the side panel
Note	In conjunction with code C8Z (wheelbase 3700 mm with a side trim, aerodynamic)

Article designation	Vehicle	Part number
Stainless steel trim parts, louver, side paneling	Ac5, Ac4, An	B6 752 0195

Chrome/stainless steel/look

Framing for Mercedes-Benz logo below windshield



B6 752 0196

A clear statement: The perfect frame for the Mercedes-Benz logo at the front of your vehicle.

Product benefits	For customization of the front of the vehicle
Material	High quality stainless steel, thickness 3 mm
Installation	For affixing to the vehicle front
Note	Suitable for all cabs

Article designation	Vehicle	Part number
Border for Mercedes-Benz logo below windshield	Ac5, Ac4, An, Ar5, Ar4	B6 752 0196

Entrance emblem



B6 752 0123



B6 752 0173



B6 752 0137

Elegant detail: Whether illuminated, unlit or with mirrored lettering - the entrance emblem made from stainless steel is a striking eye-catcher.

Product benefits	For customization of the vehicle
Material	High-quality stainless steel
Installation	Adhesive mounting

Mercedes-Benz entrance emblem, imprinted

Dimensions	(W x L x H) 270 x 80 x 0.6 mm
-------------------	-------------------------------

Article designation	Vehicle	Part number
Mercedes-Benz entrance emblem with imprinted lettering	Ac5, Ac4, An, Ar5, Ar4	B6 752 0123

Mercedes-Benz entrance emblem, mirrored

Dimensions	(W x L x H) 500 x 60 x 0.6 mm
-------------------	-------------------------------

Article designation	Vehicle	Part number
Mercedes-Benz entrance emblem with mirrored lettering	Ac5, Ac4, An, Ar5, Ar4	B6 752 0173

Mercedes-Benz entrance emblem, illuminated

Description	The lettering illumination is switched on when the door is opened
Installation	Bonding of emblem and electrical connection
Dimensions	(W x L x H) 500 x 60 x 0.6 mm
Note	For Ac5 and Ac4, in conjunction with a placement height of 765 mm (code F2P)

Article designation	Vehicle	Part number
Mercedes-Benz illuminated entrance emblem	Ac5, Ac4, An, Ar5, Ar4	B6 752 0137

Chrome/stainless steel/look

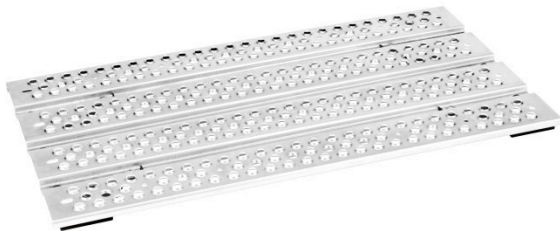
Frame covers



B6 752 0290, B6 752 0291



B6 752 0290



B6 752 0291



B6 752 0292

The closed aluminum frame covers complement the standard steps for Actros, Antos and Aroc. They not only look better but also ensure a more secure grip on the frame.

Product benefits	For an even more secure, non-slip grip on the vehicle frame; for optical enhancement; a perfect fit for the series
Material	Aluminum
Installation	Tightening torque 17,5 Nm
Package contents	Step plate and mounting material (preassembled)
Prerequisites	Model designation 963.4x (semi-trailer truck), model designation 964.4x (semi-trailer truck) + air-sprung rear axle (code I6X)
Note	Please measure the installation space between the standard step plate and fifth wheel coupling, since this can vary depending on the vehicle configuration

Article designation	Vehicle	Part number
Step plate behind cab, trapezoid, (W x L) 890 (840) mm x 725 mm	Ac5, Ac4, An, Ar5, Ar4	B6 752 0290
Step plate behind cab, (W x L) 840 x 475 mm	Ac5, Ac4, An, Ar5, Ar4	B6 752 0291
Step plate behind cab, (W x L) 840 x 225 mm	Ac5, Ac4, An, Ar5, Ar4	B6 752 0292

Chrome/stainless steel/look

Mirror covers



[B6 752 0197](#)

With the mirror for the driver and passenger side you create further highlights and give your vehicle an individual appearance.

Product benefits	For customization of the vehicle
Installation	Simple exchange; mirror cover is installed as a replacement for the original (e.g. code FOX), clip-on assembly
Package contents	Kit for driver and front passenger side
Note	Not in combination with MirrorCam on Actros 5

Article designation	Vehicle	Part number
Mirror cover, chrome-plated (code FT2), Mirror cover, chrome-plated	Ac5, Ac4, An, Ar5, Ar4	B6 752 0197

Cover for wheel arch and engine (code P0Q)

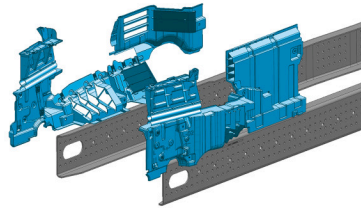


A clean thing - the wheel arch and engine cover (code P0Q) is attached to the vehicle frame and protects the engine and its add-on parts from damage and dirt. In particular vehicles for heavy-duty off-road or construction jobs, but also vehicles used on the road can be retrofitted with it.

Product benefits Protects the engine and nearby components from damage caused by stone chips and dirt; reduced maintenance costs; higher residual value due to engine value retention

For vehicles with roof wind deflectors or side deflectors (code F5A or F5B or F5C or F5D or F5E or F5H or F5I)

Article designation	Vehicle	Part number
For vehicles with cab, 765 mm body floor height (code F2P), L cab (code F1R)	Ac5, Ac4	A 961 520 89 23
For vehicles with cab, 600 mm body floor height (code F2N), L cab (code F1R)	Ac5, Ac4	A 961 520 91 23



For vehicles with roof wind deflectors or side deflectors (code F5A or F5B or F5C or F5D or F5E or F5H or F5I)

Article designation	Vehicle	Part number
For vehicles with cab, 765 mm body floor height (code F2P), L cab (code F1R)	Ac5, Ac4	A 961 520 88 23
For vehicles with cab, 600 mm body floor height (code F2N), L cab (code F1R)	Ac5, Ac4	A 961 520 90 23

Exhaust box shield



B6 684 8600



B6 684 8602

The front side of the exhaust box of 47X engine can be retrofitted inexpensively with a shield. Especially in heavy-duty construction site application and in vehicles with a clearance for crane support feet (C7Q, JC7Q) soiling of the electronic components on the exhaust box can be effectively reduced.

Product benefits Protects the electronic assembly parts of the exhaust box effectively against contamination und damage in vehicles with a gap for jack legs for cranes (code C7Q, JC7Q)

Material High-quality stainless steel

Installation The existing attachment points at the exhaust box are used for installation.

Article designation	Vehicle	Part number
Retrofit of exhaust box shield (code C7Q, JC7Q)	Ac4, An, Ar4	B6 684 8600
Retrofit of exhaust box shield (code C7Q, JC7Q), Only in combination with code U2G	Ac5, Ar5	B6 684 8602

Stainless steel rear axle cover caps



B6 752 0602



B6 752 0625

Wheel accessories



B6 752 0601



B6 752 0602

Right upfront even at the back: The high-quality stainless steel rear axle cap rounds off the dynamic design of your vehicle with a distinctive detail.

Product benefits Visual upgrade and customization of the vehicle, protects the axle hub against soiling

Material	High-quality stainless steel
Installation	For 57.15 cm (22.5") rear axle
Version	Polished or painted black

For planetary hub reduction axle HL7 (aluminum or steel rim)

Article designation	Vehicle	Part number
Stainless steel rear axle cap, polished	Ac5, Ac4, An, Ar5, Ar4	B6 752 0601
Stainless steel rear-axle hubcap, painted black	Ac5, Ac4, An, Ar5, Ar4	B6 752 0625

For hypoid axle HL6/HL8 (aluminum rim)

Article designation	Vehicle	Part number
Stainless steel rear axle cap, polished	Ac5, Ac4, An, Ar5, Ar4	B6 752 0602
Stainless steel rear wheel hub cap, painted black	Ac5, Ac4, An, Ar5, Ar4	B6 752 0626

For hypoid axle HL6/HL8 (steel rim)

Article designation	Vehicle	Part number
Stainless steel rear axle cap, polished	Ac5, Ac4, An, Ar5, Ar4	B6 752 0609
Stainless steel rear wheel hub cap, painted black	Ac5, Ac4, An, Ar5, Ar4	B6 752 0634

Stainless steel wheel nut caps



B6 752 0611



B6 752 0611



B6 752 0627



B6 752 0612

Because every detail counts: The wheel nut cap protects the rim and the wheel nuts against damage and sets accents on your vehicle.

Product benefits	Individualisation of the vehicle and visual enhancement; protects the rims and wheel nuts against damage (front axle)
Material	High-quality stainless steel

Made of polished stainless steel

Article designation	Vehicle	Part number
Stainless steel wheel nut cap for 57.15 cm (22.5") steel rims, 10-hole	Ac5, Ac4, An, Ar5, Ar4	B6 752 0610
Stainless steel wheel nut cap for 57.15 cm (22.5") alloy rims, 10-hole	Ac5, Ac4, An, Ar5, Ar4	B6 752 0611

Made from stainless steel, painted black, with optional Mercedes star

Article designation	Vehicle	Part number
Stainless steel wheel nut cap for 57.15 cm (22.5") steel rims, 10-hole	Ac5, Ac4, An, Ar5, Ar4	B6 752 0627
Stainless steel wheel nut cap for 57.15 cm (22.5") alloy rims, 10-hole	Ac5, Ac4, An, Ar5, Ar4	B6 752 0628

Made of polished stainless steel, cover made of black plastic, Mercedes star chrome-plated

Article designation	Vehicle	Part number
Wheel nut cap for 57.15 cm (22.5") alu rims, 10-hole	Ac5, Ac4, An, Ar5, Ar4	B6 752 0612
Replacement star for B6 752 0612	Ac5, Ac4, An, Ar5, Ar4	B6 601 0124

Stainless steel wheel nut protective caps



B6 752 0621



B6 752 0115



B6 752 0629



B6 752 0631

Attractive and practical: Wheel nut protective caps to protect the wheel nuts and for a visual upgrade.

Product benefits Visual upgrade and customization of the vehicle, protects the wheel nuts against damage

Material High-gloss polished stainless steel

Note Wheel nut protective caps for 27 mm size, required for each wheel: 6 units; for 30 mm size, required for each wheel: 10 units; for 32 mm size, required for each wheel: 10 units

Made of polished stainless steel

Article designation	Vehicle	Part number
Wheel nut protective caps for size 27 mm	Ac5, Ac4, An, Ar5, Ar4	B6 752 0115
Wheel nut protective caps for size 30 mm	Ac5, Ac4, An, Ar5, Ar4	B6 752 0116
Wheel nut protective caps for size 32 mm	Ac5, Ac4, An, Ar5, Ar4	B6 752 0635
Wheel nut protective caps for size 32 mm width across flats (steel rim only)	Ac5, Ac4, An, Ar5, Ar4	B6 752 0621

Made of stainless steel, powder-coated black

Article designation	Vehicle	Part number
Wheel nut caps for size 32 mm width across flats (steel rim only)	Ac5, Ac4, An, Ar5, Ar4	B6 752 0629

Wheel nut protective cap puller

Pulling pliers for wheel nut protective caps, for all sizes

Product benefits Practical tool for wheel nut protective cap

Article designation	Vehicle	Part number
Wheel nut protective cap puller	Ac5, Ac4, An, Ar5, Ar4	B6 752 0631

Wheel accessories

Light alloy wheels



[B6 601 0007](#)



[A 001 400 85 02](#)

Great look and increased economy: the light alloy rim "Speedline" is approximately 40% lighter and reduces brake wear.

Product benefits Payload gain by reducing the tare weight of the vehicle; enhancement of the vehicle look

Material Aluminum

Article designation	Vehicle	Part number
"Speedline" light alloy rim; 57.15 cm (22.5") x 9.00"; 28.2 kg	Ac5, Ac4, An, Ar5, Ar4	B6 601 0007
"Speedline" light alloy rim; 57.15 cm (22.5") x 8.25"; 27.35 kg	Ac5, Ac4, An, Ar5, Ar4	A 001 400 85 02
Chrome-plated plastic cap for covering the wheel nuts on front axle + rear axle	Ac5, Ac4, An, Ar5, Ar4	A 000 401 01 24
Set of wheel bolts 6 pcs. for 44,45 cm (17,5") x 6,75" rims, for front axle	Ac5, Ac4, An, Ar5, Ar4	A 000 400 02 72

Valve extensions, air pressure gauge



B6 752 0622

Valve extensions (for mounting wheel trim panels)

Easy, practical and safe: Valve extension for air pressure monitoring without needing to remove the full wheel trim. Multi-layered design for even greater safety. Available in three lengths.

Product benefits Easy to mount; easier access to the tire valves for controlling the air pressure on full wheel rims

Article designation	Vehicle	Part number
Valve extension 75 mm	Ac5, Ac4, An, Ar5, Ar4	B6 752 0622
Valve extension 145 mm	Ac5, Ac4, An, Ar5, Ar4	B6 752 0623
Valve extension 185 mm	Ac5, Ac4, An, Ar5, Ar4	B6 752 0624

Air pressure gage

The validator is operated by a lithium battery..

Product benefits Easy checking of the tire air pressure with an easy to read display

Property Display optionally in bar, psi, kPa or kg/cm³, integrated LED lighting, automatic shutoff when not in use

Technical data Tire pressure testing range: approx. 0.15 - 10 bar, maximum deviation +/- 0.07 bar

Article designation	Vehicle	Part number
Air pressure gauge, digital	All model series	A 000 583 36 47



A 000 583 36 47

Windshield wipers with telescoping handle



B6 753 0143

A clean thing: Windshield wipers consisting of cleaning sponge and puller for quick and easy window cleaning of your truck. Streak-free wiping due to the tried and tested sealing lip and aluminum rail. With telescopic aluminum handle specially designed for high and large side windows.

Product benefits Quick and easy cleaning of even higher windows; rubber strip effectively removes the remaining water drops on windows

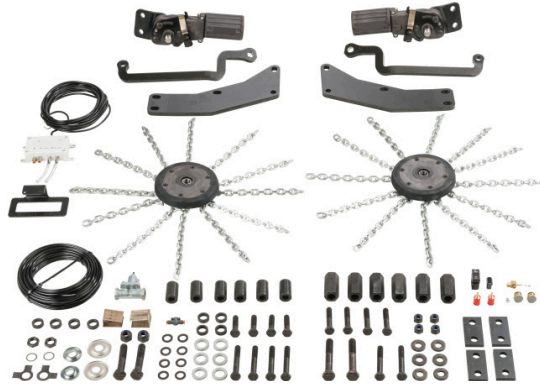
Dimensions Infinitely variable length from 70 to 125 cm, width: 25 cm

Material Handle made of aluminum, cleaning sponge made of natural rubber

Additional information Made in Germany

Article designation	Vehicle	Part number
Windshield wipers with telescoping handle	All model series	B6 753 0143

Automatic tire chains



At the press of a button in the cab, the automatic tire chains are switched on or deactivated and returned to their original position when moving off or during the journey (up to 50 km/h) on slippery and icy roads. The smooth-running and tire-protecting rotation chains have a sturdy suspension.

With the rotation chains for your truck, you stay safely on track in both ice and snow.

Product benefits Reduced risk of accidents thanks to 30% better traction of the drive wheels on smooth and slippery surfaces; easily engageable during the journey; high economic efficiency thanks to long service life; insensitive to temperature and oxidation-resistant

Version	Weight-optimized
Weight	Gross weight approx. 25 kg per side
Area of use	On roads packed with ice or covered with snow
Note	Only for vehicles with air-sprung rear axle
Technical data	Operating speed of 3 km/h to max. 50 km/h; activation speed from 3 km/h or when wheels are spinning; supply voltage 24 V, fuse 8 A; compressed air supply 7 to 10 bar

Article designation	Vehicle	Part number
Automatic tire chain, Bolt-on kit, sprocket kit 190/12, basic unit	Ac5, Ac4, An, Ar5, Ar4	B6 758 0949

Automatic tire chains

Lockable tank cap (code K5M)



A 000 470 44 05



A 000 470 66 05

Increased protection: the lockable tank cap makes life hard for fuel thieves. Simple and comfortable handling ensured by one-key system for fuel tank.

Product benefits Protects the tank content against theft; easy and comfortable handling with 1-key system for the fuel tank

Package contents Is supplied without a lock cylinder. Cylinder with key has to be ordered separately

Article designation	Vehicle	Part number
Lockable tank cap for AdBlue®	Ac5, Ac4, An, Ar5, Ar4	A 000 470 44 05
Lockable fuel filler cap for diesel	Ac5, Ac4, An, Ar5, Ar4	A 000 470 66 05

Lock cylinder for lockable fuel filler cap

Article designation	Vehicle	Part number
Lock cylinder for vehicle locking mechanism	Ac5, Ac4, An, Ar5, Ar4	A 000 760 36 05
Lock cylinder for any locking mechanism	Ac5, Ac4, An, Ar5, Ar4	A 000 760 43 05

Mobile LED traffic hazard management light set



B6 653 0015

Whether breakdown or accident: The LED breakdown guidance set makes the trailing traffic aware of the hazardous area in good time. The five bright LED light elements are installed in no time at all.

Product benefits	For quick protection of vehicles in dangerous situations
Package contents	5 LED light spots in a combined transport and charging container with charging cable
Technical data	Flashing frequency 60 flashes/minute, operating voltage 10-30 V; rechargeable via on-board electrical system of the vehicle using 2-pin vehicle connector (cigarette lighter plug); the power supply of the LED guide piece is a NiCd battery pack, complete charging of the rechargeable battery takes around 14 hours, period of operation: at least 12 hours

Article designation	Vehicle	Part number
Mobile LED traffic hazard management light set	For all model series	B6 653 0015

Warning lamp (code S8D)



A 628 583 01 53

Easily visible for more safety: The warning lamp legally stipulated in some countries is used for securing accident locations and immobile vehicles.

Product benefits	Compliance with legal requirements; improved road safety through clear hazard warning and corresponding protection function for driver, vehicle, load and other road users; greater safety when working in the dark
-------------------------	---

Weight	0.625 kg
---------------	----------

Function	Warning light: yellow for protecting the hazard area, white, steady light for working on the vehicle in the dark
-----------------	--

Article designation	Vehicle	Part number
Warning lamp (code S8D)	For all model series	A 628 583 01 53

Stone chipping protective grille for headlamps (code L4Z)



A 960 826 00 03

Increased protection of the main headlamps against damage from stone chipping, branches etc., especially when in use on construction sites and rough roads.

Product benefits Very good corrosion resistance due to cataphoretic immersion primer and powder coating; increased protection of the main headlamps against damage from stone chipping, branches etc., especially when used on construction sites and rough roads; sturdy steel protective grilles provide high stability; reduction of headlamp maintenance costs

Material	Steel, gray painted
Note	Only in combination with cab width 2.30 m (code F2G), bumper, corners made of steel (code F7B), not in combination with headlamp cleaning system (code L3Z)

Article designation	Vehicle	Part number
Retrofitting of rockfall protective grille, metal, for headlamps (code L4Z)	An, Ar	A 960 826 00 03

Side window wind deflector



B6 753 0025



B6 753 0025

Drive fast without a draft: The side window wind deflector protects against airstream with an open window. The precise fit ensures that little wind noise develops while driving. With a custom-fit cutout for the curb view mirror on the co-driver's side.

Product benefits	Protected from airstream when window open; exact fit
Material	Acrylic glass, 3 mm thickness
Color	Available in tinted and clear variants
Package contents	Set for driver's and co-driver's side, incl. mounting material

Side window wind deflector

Article designation	Vehicle	Part number
Side window wind deflectors for left-hand drive vehicle, pair, tinted	Ac5, Ac4, AN, AR	B6 753 0025
Side window wind deflectors for right-hand drive vehicle, pair, tinted	Ac5, Ac4, AN, AR	B6 753 0026
Side window wind deflectors for left-hand drive vehicle, pair, clear	Ac5, Ac4, AN, AR	B6 753 0027
Side window wind deflectors for right-hand drive vehicle, pair, clear	Ac5, Ac4, AN, AR	B6 753 0028

For replacement needs

Article designation	Vehicle	Part number
Side window wind deflector mounting kit for replacement needs	Ac5, Ac4, Ac3, Ac2, Ac1	B6 753 0015

Wind deflector



Mercedes-Benz GenuineParts

More than one hundred years of experience in vehicle and part development make our parts what they are - Mercedes-Benz GenuineParts. They have been specially developed and tested in accordance with the specification requirements of Mercedes-Benz. Exact fit ensures ease of installation without rework. Mercedes-Benz GenuineParts stand out for their high quality and reliability - so that your Mercedes-Benz can always remain an original.



Advantages at a glance:

- Current technical development status as well as uniform quality assurance
- Pan-European warranty with long-term availability even after series-production period
- Global supply availability with short procurement times through efficient logistics
- Customer-oriented portfolio of new parts, replacement parts and repair solutions
- Fulfillment of Mercedes-Benz requirements in terms of safety, economy and environmental protection

The interior.



Experience additional comfort.

We offer many additional extras as Genuine Accessories for all those who are at home on the road - for a homelike feeling and more resting and sleeping comfort.



Stowage trays



B6 626 0333



Socket for stowage tray



A 960 843 00 07 9051

Practical stowage tray with anti-slip insert. Ideal for everything that must be within reach.

Product benefits	Orderly accommodation with optimized arrangement, including for stowing smaller utensils; extension of available stowage space options in cab
Installation	Easy to attach, short installation time
Dimensions	(W x L x H) ca. 760 mm x 360 mm x 80 mm
Note	Stowage tray is prepared for extension with a 24V socket and can be supplemented by this

Article designation	Vehicle	Part number
Cockpit stowage tray	Ac5	B6 626 0356
Cockpit stowage tray	Ac4	B6 626 0333
Power outlet	Ac5, Ac4	A 960 545 02 26
Cable set	Ac5, Ac4	B6 683 0044

Flexible and practical: The removable stowage tray is simply hooked into the stowage compartments under the bed and can be moved individually. Ideal for stowing small traveling utensils in a neat and orderly fashion.

Product benefits	Increased storage space in the cab; orderly storage with optimized partitioning also for storing smaller utensils in the large storage compartments
-------------------------	---

Weight	2 kg
Dimensions	(L x W x H) approx. 450 mm x 191 mm x 165 mm
Note	With SoloStar (code D0Z) and sound system (code J2J) only installable if storage box is available on the left underneath cab (code F4Z)

Article designation	Vehicle	Part number
Stowage tray (retrofit code D7J), for stowage compartments	Ac5, Ac4	A 960 843 00 07 9051

Key ring



[B6 667 2041](#)

Practical and comfortable: The key ring has been specially designed for the multifunction key for your truck and this can be easily attached to it. Other keys can also be attached to the key ring.

Product benefits	Practical storage of keys specially for the multifunction key
Material	Made from felt fabric, with Mercedes-Benzlogo
Dimensions	(W x L x H) 150 x 35 x 5 mm

Article designation	Vehicle	Part number
Key ring	For all model series	B6 667 2041

Key case



[B6 667 2042](#)

The key case with a snap hook protects the display of the multifunction key from getting scratched.

Product benefits	Practical storage of keys; protects the display of the multifunction key from getting scratched
Material	100% polyester, with velcro fastener
Dimensions	(W x L x H) 140 x 70 x 40 mm

Article designation	Vehicle	Part number
Key case	Ac4	B6 667 2042

Bag for the stowage compartment behind the driver's seat



Perfect companion. Ideal usage of the medium-large stowage compartment under the bunk. Quick access through opening at top with zipper and further functional details. Modern design combined with sturdy, easy-to-clean material.

Product benefits Additional storage option; variable usage

Material Polyester

Dimensions (W x L x H) 54 x 34 x 19 cm



[B6 787 3692](#)

Article designation	Fahrzeug	Part number
Stowage compartment bag for the stowage compartment below the bunk	Ac5, Ac4	B6 787 3692

Laundry bag for stowage compartment over the windshield



[B6 787 3691](#)

Particularly sturdy: The laundry bag has an extra compartment for the washbag and a removable partition. The practical front-end flaps mean that the bag can remain in the stowage compartment when filling and emptying it. Particularly sturdy due to the reinforced base.

Product benefits Additional storage option; variable usage

Material Polyester

Dimensions (W x L x H) 44 x 37 x 30 cm



Article designation	Vehicle	Part number
Laundry bag for BigSpace/GigaSpace cab	Ac5, Ac4	B6 787 3691

Ambient lighting



The ambient lighting with a total of 136 LEDs for the glass tilting/sliding roof can be used to configure the light in the driver's cab to meet your exact requirements. The color of the LEDs can be selected according to your desired lighting mood with a press of a button. Six different colors (warm white, amber, blue, red, green, yellow) are preset and they can be selected quickly. All other colors can be individually set and create a pleasant ambience in the cab.

Product benefits	Pleasant, indirect light; unique atmosphere of wellbeing indoors; easy adjustment of the desired light color; continuously dimmable light strength
Cab	L-, Big-, Giga-, StreamSpace cab
Technical data	Operating voltage 24 V; power consumption 1 A
Package contents	Full set incl. wiring and switch
Prerequisites	Electric tilting/sliding roof, glass (code D8M) oder tilting roof, electric (code D8N)



[B6 626 0360](#)

LED reading lamp



Practical additional lighting in cockpit: reading lamp with white LED and flexibly adjustable gooseneck.

Product benefits	Low power consumption and long service life
Material	Housing, cover made of black plastic, base painted in black
Dimensions	Length approx. 400 mm
Connections	Electrical connection through 120 mm long line
Technical data	24 Volts, 3 Watt, power consumption = approx. 0.12 amps
Package contents	Incl. light source, mounting clip and mounting screws, supplied with unconnected cable end for individual mounting
Installation time	Approx. 30-45 minutes

Article designation	Vehicle	Part number
LED reading lamp	Ac5, Ac4, An, Ar5, Ar4	B6 682 8805

Interior

Bed, 900 mm



More space, more comfort: the 900 mm extra-wide bed at the top provides even more rest and sleeping comfort in the 2,5 m wide Stream, Big and GigaSpace cabs.

Product benefits	Higher rest and sleeping comfort
Cab	2500 mm (code F2H)
Dimensions	Mattress thickness 14 cm, 90 cm wide, 220 cm long
Package contents	Bed and mattress
Exclusions	Air intake via corner (code M8D)

Article designation	Vehicle	Part number
Bed upper extra wide (900 mm)	Ac5, Ac4	B6 626 0365

[B6 626 0365](#)

Bedding sets



[B6 787 3695](#)



[B6 787 2424](#)

Relaxing sleep meets beautiful design.

Product benefits High abrasion resistance, breathable, crease-resistant, keeps its shape, lightfast, ecologically compatible in accordance with Oeko-Tex Standard 100, suitable for allergy sufferers

Material Covers and pillows filled with polyester-cotton mixture; duvet covers made of soft fine fabric, washable up to 60 °C

"Break" bedding set in barely inflammable quality

Note Pillow and blanket not flame retardant

Article designation	Vehicle	Part number
Bedding set (cushion cover and duvet cover)	Ac5, Ac4	B6 787 3695
Bedding set (pillowcase and duvet cover, with pillow and blanket)	Ac5, Ac4	B6 787 3700
Bedding set, pillow and blanket, for pillowcase and duvet cover	Ac5, Ac4	B6 787 3701
Duvet cover, 135 x 200 cm	Ac5, Ac4	B6 787 3693
Cushion cover, 80 x 80 cm	Ac5, Ac4	B6 787 3694

"Checkerboard" bedding set

Article designation	Vehicle	Part number
Bedding set (pillowcase and duvet cover, with pillow and blanket)	Ac5, Ac4	B6 787 2424
Duvet cover, 135 x 200 cm	Ac5, Ac4	B6 787 2443
Cushion cover, 60 x 60 cm	Ac5, Ac4	B6 787 2444
Pillow for pillow case, 60 x 60 cm	Ac5, Ac4	B6 787 2058
Blanket for duvet cover, 135 x 200 cm	Ac5, Ac4	B6 787 2059

Bedding sets



B6 787 2130



B6 787 2422, B6 787 2423



B6 787 2056, B6 787 2057

Bed accessories

For relaxing sleep.

Product benefits High abrasion resistance, breathable, non-creasing, dimensionally stable, lightfast, environmentally-compatible as per Oeko Tex Standard 100, suitable for allergy sufferers

Property Washable at up to 60 °C

“Plaid-patterned” bedding set

Material Made from elegant fabric that is soft to the touch

Article designation	Vehicle	Part number
Bedding set (pillowcase and duvet cover, with pillow and blanket)	Ac5, Ac4	B6 787 2130
Duvet cover, 135 x 200 cm	Ac5, Ac4	B6 787 2055
Cushion cover 60 x 60 cm	Ac5, Ac4	B6 787 2054
Pillow for pillow case, 60 x 60 cm	Ac5, Ac4	B6 787 2058
Blanket for duvet cover, 135 x 200 cm	Ac5, Ac4	B6 787 2059

Neck bolster and travel neck pillow

Ideal for a nap and for relaxing when reading or watching television. Matches bedding design.

Material 100% cotton

Article designation	Vehicle	Part number
Bolsters for “checkerboard” bedding set	Ac5, Ac4	B6 787 2422
Crescent-shaped cushion for “checkerboard” bedding set	Ac5, Ac4	B6 787 2423
Bolsters for “plaid-patterned” bedding set	Ac5, Ac4	B6 787 2056
Crescent-shaped cushion for “plaid-patterned” bedding set	Ac5, Ac4	B6 787 2057

Mattress PremiumComfort (code D3N and D3M)



[A 000 970 87 49](#)

The multi-zone cold foam mattress provides a perfect sleeping climate and high levels of comfort when sleeping and resting. The different hardness zones are tailored to the respective areas of the body.

Product benefits	Optimized sleeping climate due to breathable pipe system; outstanding long-term usage properties due to permanent support force of the cold foam and hard-wearing, removable and washable quilted cover; improved comfort when sleeping and resting due to individual support of the different body parts using the multi-zone cold foam mattress; suitable for allergy sufferers; odor-inhibiting
-------------------------	--

Dimensions	Mattress thickness approx. 11 cm, 75 cm wide and 200 cm long
-------------------	--

Property	Double-cloth knitted fabric, quilted, wadded
-----------------	--

Package contents	Incl. quilted cover
-------------------------	---------------------

Article designation	Vehicle	Part number
"PremiumComfort" mattress (code D3N), for cab width 2.5 m	Ac5, Ac4	A 000 970 87 49
"PremiumComfort" mattress (code D3N), for cab width 2.3 m	Ac5, Ac4	A 000 970 95 49

Mattress cover



For an especially comfortable feel of lying: hard-wearing, soft quilted cover for the PremiumComfort and Standard mattresses, each available in two variables (for 2.5 m wide or 2.3 m wide cab). The mattress cover made of polyester is skin-friendly and easy to clean and supports air circulation.

Product benefits	Hard-wearing; breathable; non-allergenic; odor-preventive
Material	100% polyester, double layer knitted fabric, quilted, padded
Color	Beige
Property	Washable at up to 60 °C

For PremiumComfort mattresses

Note	Only in combination with mattress, PremiumComfort, below (code D3M)
-------------	---

Article designation	Vehicle	Part number
For lower bunk, PremiumComfort, 2200 x 750 mm	Ac5, Ac4	B6 787 3676
For lower bunk, PremiumComfort, 2000 x 750 mm	Ac5, Ac4	B6 787 3678

For standard mattresses

Article designation	Vehicle	Part number
For lower bunk, Standard, 2000 x 750 mm	Ac5, Ac4	B6 787 3677
For lower bunk, Standard, 2200 x 750 mm	Ac5, Ac4	B6 787 3679
For upper bunk, Standard, 2000 x 600 mm	Ac5, Ac4	B6 787 3703
For upper bunk, Standard, 2200 x 600 mm	Ac5, Ac4	B6 787 3704
For upper bunk, Standard, 2000 x 750 mm	Ac5, Ac4	B6 787 3705
For upper bunk, Standard, 2200 x 750 mm	Ac5, Ac4	B6 787 3706

Mattress protector



[B6 787 3680](#)

High-quality mattress topper with Visco fabric foam core, which is placed on the mattress.

Product benefits	Protects the mattress; for greater comfort when sleeping; excellent body adaptation; very good pressure relief and ideal conditions for sleep
Material	100% polyester
Dimensions	(W x L x H) 2000 x 740 x 45 mm
Color	Black
Weight	3 kg
Property	Topper with a total height (including outer cover) of ca. 4.5 cm, topper outer cover can be washed manually at a temperature of 30°C; the foam core must be removed before washing (zip fastener)

Article designation	Vehicle	Part number
Mattress protector	Ac5, Ac4, Ar5, Ar4	B6 787 3680

Molton layer and fitted sheets



B6 787 2050, B6 787 2118



B6 787 3696

Bed accessories

The functional molton layer made of pure cotton protects the mattress, stores moisture and improves lying comfort.

Molton layer

Product benefits	Reliable protection against superficial soiling; skin-friendly, easy-care material; highly boiling-resistant and highly absorbent
Material	100% cotton
Property	Washable at up to 95 °C

Article designation	Vehicle	Part number
Molton layer, 2000 x 600 mm	Ac5, Ac4	B6 787 2118

Excellent sleeping comfort: elasticated fitted sheets for perfect fit.

Fitted bed sheets in barely inflammable quality

Product benefits	With elastic bands for a very good fit; hard-wearing; in flame-retardant quality
-------------------------	--

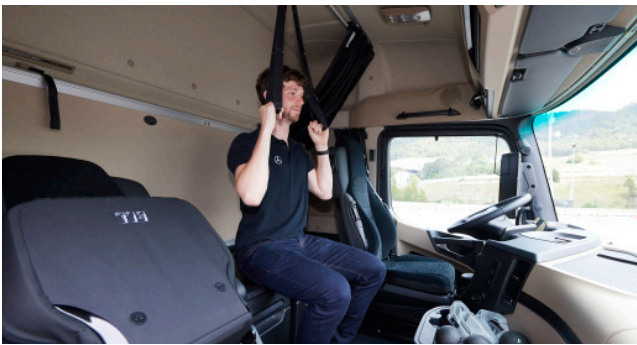
Article designation	Vehicle	Part number
Upper bed, narrow, 2000 x 600 mm	Ac5, Ac4	B6 787 3696
Upper/lower bed, 2000 x 750 mm	Ac5, Ac4	B6 787 3697
Upper bed, narrow, 2200 x 600 mm	Ac5, Ac4	B6 787 3698
Upper/lower bed, 2200 x 750 mm	Ac5, Ac4	B6 787 3699

Fitted bed sheets in fine jersey quality made from pure, high-quality cotton

Product benefits	With elastic bands for very good fit; smooth, soft and kind to the skin; durable; hard-wearing; suitable for tumble dryers; no ironing
-------------------------	--

Article designation	Vehicle	Part number
Upper bunk, 2200 x 900 mm	Ac5, Ac4, An	B6 787 3702

TopFit set



B6 626 0363



B6 626 0350

Making a top fit start: keeping fit in your driver's cab is no problem with the TopFit Set. For better performance at the steering wheel and a strong and healthy body.

Product benefits Prevention and targeted reduction of complaints in problem areas such as neck, shoulders, lower back and hip; facilitates a variety of exercises for all important muscle groups

Validity Does not only fit in the Actros, but in all truck models with level cab floors

Note Always stow and secure the TopFit set properly

TopFit-Set by Blackroll

Package contents Gym bag for space-saving storage, Single Ball, Duo Ball, Multi-Band gray, Multi-Band black (strong)

Additional information Always stow and secure the TopFit set properly

Article designation	Vehicle	Part number
TopFit-Set by Blackroll	Ac5, Ac4	B6 626 0363

TopFit set

Package contents Bag for space-saving storage, Top Fit Board, various expanders incl. handles, USB stick with training instructions

Dimensions (L x B) 65 x 40 cm

Additional information Always stow and secure the TopFit set properly

Article designation	Vehicle	Part number
TopFit set	Ac5, Ac4	B6 626 0350

Cockpit with leather covering (nappa leather)



B6 626 0351; B6 626 0352

Exclusive leather cockpit made from high-quality nappa leather with contrasting topstitching in silver.

Product	High-quality leather; durable material; for a comfortable grip
benefits	
Material	Nappa leather

Article designation	Vehicle	Part number
Leather-clad cockpit, right, left-hand drive vehicle	Ac5	B6 626 0351
Leather-clad cockpit, left, left-hand drive vehicle	Ac5	B6 626 0352
Leather-clad cockpit, right, right-hand drive	Ac5	B6 626 0357
Leather-clad cockpit, left, right-hand drive vehicle	Ac5	B6 626 0358

Leather-clad door handle



[B6 626 0353](#)

Gives your interior an even more stylish, modern ambiance: black leather door handle with silver contrasting topstitching.

Product	Pleasantly soft feel; particularly high-quality nappa leather;
benefits	durable material; with silver contrasting topstitching
Material	Plastic covered with nappa leather
Color	Black

Article designation	Vehicle	Part number
Leather door handle, left	Ac5, Ac4	B6 626 0353
Leather door handle, right	Ac5, Ac4	B6 626 0354

Curtains



B6 626 0370



B6 626 0370

The opaque curtain "Blackout" ensures a good night's sleep. The special darkening fabric is made of polyester, which makes it a very robust fabric that is simultaneously very easy to care for. Moreover, polyester is lightfast, i.e. the fabric does not fade in sunlight. The curtain is two-tone in almond beige and black and thereby perfectly matches the interior of the vehicle.

Product benefits	Perfectly fitting and easy to clean; simple, quick and secure assembly; opaque, which gives higher sleeping comfort
Material	100% polyester
Color	Almond beige, black
Property	Washable at 30° C, not suited for tumble drying
Note	The curtain can be installed on both sides

Article designation	Vehicle	Part number
Bicolor curtain, windshield, right	Ac5, Ac4, Ar5, Ar4, An	B6 626 0370
Bicolor curtain, windshield, left	Ac5, Ac4, Ar5, Ar4, An	B6 626 0371
Curtain, windshield, right MirrorCam	Ac5, Ar5, Ar4, An	B6 626 0372
Curtain, windshield, left MirrorCam	Ac5, Ar5, Ar4, An	B6 626 0373
Bicolor curtain, in front of the bed, for GigaSpace	Ac5, Ac4, Ar5, Ar4, An	B6 626 0374
Bicolor curtain, in front of the bed, for Big/StreamSpace	Ac5, Ac4, Ar5, Ar4, An	B6 626 0375

Rubber floor mats



B6 684 8625

Decorative protection: The hard-wearing floor mats protect the interior from becoming damaged or soiled. The material creates a pleasant living and working environment. Available in different materials for all cab and seat variants. It is characterized by its simple cleaning.

Product benefits	Tailored exactly to the cab; no slipping; high-quality appearance; high wear resistance and oil resistance; simplified cleaning; suitable for steam jet cleaners
Note	Cab width: 2.3 m (code F2G) or 2.5 m (code F2H)
Color	Black
Material	EPDM

Left-hand drive vehicle

Article designation	Vehicle	Part number
2.5 m	Ac5, Ac4, Ar5, Ar4	B6 684 8625
2.3 m, with a tunnel, set driver's/co-driver's side (code F2B or F2C)	Ac5, Ac4, An, Ar5, Ar4	B6 684 8626
2.3m, with a tunnel, set driver's/co-driver's side (code F2E)	Ac5, Ac4, An, Ar5, Ar4	B6 684 8627
2.3 m, level surface, set driver's/co-driver's side (code F2A)	Ac5, Ac4, An, Ar5, Ar4	B6 684 8628

Right-hand drive vehicle

Article designation	Vehicle	Part number
2.3 m, with a tunnel (code F2E)	Ac5, Ac4, An, Ar5, Ar4	B6 684 8630
2.3 m, with a tunnel, set driver's/co-driver's side (code F2B or F2C)	Ac5, Ac4, An, Ar5, Ar4	B6 684 8631

Ribbed floor mats



B6 768 1330

Refinement of vehicle interior: ribbed floor mats cut to size for custom fit in cab.
With Mercedes-Benz emblem.

Product benefits	Non-skid back, easier cleaning of interior; suitable for steam cleaning
Color	Anthracite gray
Material	100% polypropylene
Note	Cab width: 2.3 m (code F2G) or 2.5 m (code F2H)

Left-hand drive vehicle

Article designation	Vehicle	Part number
All cab widths, driver's side with a level floor (code F2A)	Ac5, Ac4, An, Ar5, Ac4	B6 768 1330
2.5 m, co-driver's side, SoloStar (code D0Z)	Ac5, Ac4	B6 768 1331
2.5 m, co-driver's side, suspension seat (code D1P or D1Q)	Ac5, Ac4, Ar5, Ar4	B6 768 1332
2.5 m, co-driver's side, function seat (code F2A + D1N)	Ac5, Ac4, Ar5, Ar4	B6 768 1333
2.5 m, center mat (Code F2A)	Ac5, Ac4	B6 768 1345
2.3 m, co-driver's side, function seat (code F2B or F2C or F2E)	Ac5, Ac4, An, Ar5, Ar4	B6 768 1336
2.3 m, driver's side (code F2B or F2C or F2E)	Ac5, Ac4, An, Ar5, Ar4	B6 768 1337
2.3 m, co-driver's side, suspension seat (code F2A + D1P or D1Q)	Ac5, Ac4, An, Ar5, Ar4	B6 768 1334
2.3 m, co-driver's side, function seat (code F2A + D1N)	Ac5, Ac4, An, Ar5, Ar4	B6 768 1335
2.3 m, center mat (code F2A)	Ac5, Ac4	B6 768 1347
2.3 m, center mat (code F2B or F2C or F2E)	Ac5, Ac4	B6 768 1348

Right-hand drive vehicle

Article designation	Vehicle	Part number
All cab widths, driver's side with a level surface (code F2A)	Ac5, Ac4, An, Ar5, Ar4	B6 768 1350
2.5 m, co-driver's side, suspension seat (code D1P or D1Q)	Ac5, Ac4, Ar5, Ar4	B6 768 1351
2.5 m, co-driver's side, function seat (code D1N)	Ac5, Ac4, Ar5, Ar4	B6 768 1352
2.5 m, level surface, center mat (code F2A)	Ac5, Ac4	B6 768 1356
2.3 m, co-driver's side, suspension seat (code D1P or D1Q)	Ac5, Ac4, An, Ar5, Ar4	B6 768 1353
2.3 m, co-driver's side, function seat (code D1N)	Ac5, Ac4, An, Ar5, Ar4	B6 768 1354
2.3 m, co-driver's side (code A1Z)	Ac5, Ac4	B6 768 1358
2.3 m, with tunnel, driver's side (code F2B or F2C)	Ac5, Ac4, An, Ar5, Ar4	B6 768 1355
2.3 m, center mat (code F2B)	Ac5, Ac4, An	B6 768 1357

Velour floor mats



B6 768 2230

High-quality velour floor mats with edging and contrasting topstitching in silver carpet quality pearl velour, without flex additives and solvent-free. Center mats with an embroidered star in silver, matches the floor mats.

Product benefits	Exact fit; non-skid polyurethane adhesive backing; flame-retardant materials; can be cleaned with a steam jet device; adhesive properties are retained
Color	Black
Note	Cab width: 2.3 m (code F2G) or 2.5 m (code F2H)

Left-hand drive vehicle

Article designation	Vehicle	Part number
All cab widths, driver's side with a level floor (code F2A)	Ac5, Ac4, An, Ar5, Ac4	B6 768 2230
2.5 m, co-driver's side, SoloStar (code D0Z)	Ac5, Ac4	B6 768 2231
2.5 m, co-driver's side, suspension seat (code D1P or D1Q)	Ac5, Ac4, Ar5, Ar4	B6 768 2232
2.5 m, co-driver's side, function seat (code F2A + D1N)	Ac5, Ac4, Ar5, Ar4	B6 768 2233
2.5 m, center mat (code F2A)	Ac5, Ac4	B6 768 2245

Right-hand drive vehicle

Article designation	Vehicle	Part number
All cab widths, driver's side with a level floor (code F2A)	Ac5, Ac4, An, Ar5, Ar4	B6 768 2250
2.5 m, co-driver's side, suspension seat (code D1P or D1Q)	Ac5, Ac4, Ar5, Ar4	B6 768 2251
2.5 m, co-driver's side, function seat (code D1N)	Ac5, Ac4, Ar5, Ar4	B6 768 2252
2.5 m, level surface, center mat (code F2A)	Ac5, Ac4	B6 768 2256

Floor mats

Velour floor mats



A 960 680 87 05

High-quality velour floor mats with trim and contrasting topstitching in almond beige. Pearl velour carpet quality, without flex additives and solvent-free. Center mats match the floor mats.

Product benefits	Exact fit; non-skid polyurethane adhesive backing; flame-retardant materials; can be cleaned with a steam jet device; adhesive properties are retained
Note	Cab width: 2.3 m (code F2G) or 2.5 m (code F2H)
Color	Anthracite

Left-hand drive vehicle		
Article designation	Vehicle	Part number
All cab widths, driver's side with a level surface (code F2A)	Ac5, Ac4, An, Ar	A 960 680 87 05
2.5 m, co-driver's side, SoloStar (code D0Z)	Ac5, Ac4, Ar	A 960 680 90 05
2.5 m, co-driver's side, suspension seat (code D1P or D1Q)	Ac5, Ac4, Ar	A 960 680 88 05
2.5 m, co-driver's side, function seat (code F2A + D1N)	Ac5, Ac4, Ar	A 960 680 89 05
2.5 m, center mat (code F2A)	Ac5, Ac4, Ar	A 960 680 97 05
2.3 m, co-driver's side, suspension seat (code F2A + D1P or D1Q)	Ac5, Ac4, An, Ar	A 961 680 98 03
2.3 m, co-driver's side, function seat (code F2A + D1N)	Ac5, Ac4, An, Ar	A 961 680 99 03
2.3 m, co-driver's side, function seat (code F2B or F2C or F2E)	Ac5, Ac4, An, Ar	A 960 680 96 05
2.3 m, driver's side (code F2B or F2C or F2E)	Ac5, Ac4, An, Ar	A 960 680 95 05
2.3 m, flat center mat (code F2A)	Ac5, Ac4, Ar, An	A 960 680 99 05
2.3 m, center mat (code F2B or F2C or F2E)	Ac5, Ac4, An, Ar	A 961 680 95 03

Compressor refrigerator box (code F84)



A 967 830 00 60 7D53

The refrigerator box is permanently mounted between the driver and the co-driver's seat on the engine tunnel. Integrated into the two-piece lid is a clamping device for fixing paper. Four upright 1,5-liter bottles can be stored in their own cooling segment in the illuminated refrigerator box. The second, separated cooling segment can be used for food. A control panel on the rear can be used to activate the refrigerator box and set the inside temperature. A battery rundown protection system is installed. The cooling output can be regulated using a thermostat - irrespective of the ambient temperature.

Product benefits Increased driver comfort and well-being with drinks and food carried in the vehicle

Cab	S, L cab
Operating voltage	12/24 V; average power consumption: approx. 35 W
Weight	12 kg
Dimensions	(L x W x H) approx. 550 x 260 x 440 mm
Capacity	Approx. 23 l
Temperature range	-18°C to +10°C; optimum cooling temperature approx. 5°C
Load	Lid when used as step can be loaded up to 150 kg

Article designation	Vehicle	Part number
Compressor refrigerator box (code Y1U) for vehicles with code E1H (2 batteries 165 Ah)	Ac5, Ac4, At3, Ax3	A 967 830 00 60 7D53
Mounting kit	Ac5, Ac4, At3, Ax3	A 967 830 00 14

Mobile refrigerator box



Cooling and heating in one: thermoelectric cool box with removable lid, power saving circuit, battery discharge protection and adjustable thermostat.

Product benefits Increases driver comfort and well-being by carrying beverages and food; large interior offers room for several 1.5 l bottles; energy efficiency class A++; integrated battery monitor to protect against deep discharge of the vehicle battery

Temperature range Cooling: to 27°C at ambient temperature; heating: to 65°C

Operating voltage 12 V/24 V/230 V

Weight 7,3 kg

Dimensions (W x L x H) 450 x 303 x 420 mm

Capacity 20 l

Note Always stow and secure the cooling box properly

Article designation	Vehicle	Part number
Refrigerator box mobile, portable	Ac5, Ac4, Ac3, Ac2, Ac1, An, Ar5, Ar4	B6 667 2040

Refrigerator, in the drawer/under bed (code Y1X)



Great storage even when you're on the move: the refrigerator in the drawer under the bed ensures the ideal cooling temperature for drinks and food. It is activated using a switch on the instrument panel. The cooling output can be adjusted by a thermostat, regardless of the ambient temperature.

Product benefits Discharge protection for the battery; more stowage space; practical height so that even 1.5 liter bottles can be transported upright; comfort and well-being are increased by keeping traveling with beverages and food, meaning you don't need to rely on the often expensive choices offered in highway rest stops

Operating voltage	24 V
Weight	11 kg
Capacity	Approx. 36 liter or 26 liter (A 001 820 0606)
Temperature range	+5°C to +13°C
Installation position	The refrigerator in the drawer under the bed is activated using a switch on the dashboard
Additional information	Only for vehicles with drawers, under bed (code D7J), not in combination with (code D0Z)

Article designation	Vehicle	Part number
For vehicles with pre-installation for refrigerator (code Y9A) and with L cab with flat floor (code F1H, F1I, F1J)	Ac5, Ac4, Ar	A 000 820 98 06
For vehicles without pre-installation for refrigerator (code Y9A) and with L-cab with even floor (code F1H, F1I, F1J)	Ac5, Ac4, Ar	A 000 820 99 06
For vehicles without preinstallation for refrigerator (code Y9A) and with 170 mm tunnel (code F1D, F1E)	Ac5, Ac4, Ar	A 001 820 06 06

Manual coffee maker, 24 Volt (for pads)



Take a break! Enjoy your favorite coffee in your truck. No matter whether you'd rather a large (110 ml) or a small (80 ml) cup of coffee with standard coffee pads. Your coffee will be ready within 4 minutes. Power is supplied for the coffee maker via the 24 volt cigarette lighter. The handy coffee maker fits in the beverage holder.

Product benefits	Quick coffee brewing; The customary coffee pads are used; Fits in the beverage holder
Operating voltage	24 Volt
Capacity	Per 1 cup (110 ml or 80 ml)
Pressure	2 bar
Output	140 Watts

Article designation	Vehicle	Part number
Manual coffee maker, 24 Volt (for pads)	All model series of trucks	B6 626 0362

Microwave, 24 Volt



B6 626 0361

Eat on the go: the microwave with a 17-litre cooking chamber makes it easy and convenient to prepare warm meals. With LED interior lighting, three cooking levels, a defrost function and user-friendly control panel with large symbols. Especially for the use in the driver's cab of a truck, roadworthy and vibration-tested. It fits into the upper storage compartment of GigaSpace cabs.

Product benefits With LED interior lighting, three cooking levels, a defrost function and large control panel; especially designed for use in trucks; for the upper storage compartment of the GigaSpace cabs

Technical data	24 Volt, 500 Watt, operating frequency 2450 MHz
Dimension	279 x 445 x 335 mm (HxWxD) outside, 181 x 278 x 280 mm (HxWxD) inside
Weight	9.8 kg
Note	In combination with code E9G pre-installation for electrical devices (can be retrofitted)

Article designation	Vehicle	Part number
Microwave, 24 Volt	Ac5, Ac4	B6 626 0361

Digital clock



[A 000 827 78 70](#)

Always perfectly in time: The digital LCD clock with intermittent alarm tone (approx. 75 dB volume) ensures the right timing whenever you are on the move.

Product benefits	Fixed, easy installation; minimalistic design
Installation	Easy installation behind the driver's seat by removing the cover and inserting with custom fit; fits into any free cockpit switch panel or into the stowage tray above the windshield
Dimensions	Length 100 mm
Package contents	Incl. 2 Standard AA batteries
Temperature range	-10°C to +50°C

Article designation	Vehicle	Part number
Digital clock	Ac5, Ac4	A 000 827 78 70

Footrest cushion



[B6 626 0332](#)

Relaxation of the legs - Ideally in conjunction with the SoloStar concept (code D0Z) of the Actros. The footrest cushion fits exactly into the stowage area of the center console.

Product benefits	Soft base for resting feet on at the end of the working day or during a break
Material	Imitation leather, washable
Color	Almond beige

Article designation	Vehicle	Part number
Footrest cushion	Ac5, Ac4	B6 626 0332

Compressed-air gun (code Y4Z)



A 960 581 01 04

With high pressure at the plant: compressed-air gun with an approx. 2 meter long coil hose and aluminum nozzle for quick and easy cleaning of the driver's cab.

Product benefits	Quick and easy cleaning of the driver's cab; sturdy and solid handle made of glass fiber reinforced plastic
Package contents	Compressed-air gun, coil hose, holder and mounting material
Material	Glass fiber reinforced plastic
Note	Code DOS compressed-air connection in driver's cab is required

Article designation	Vehicle	Part number
Compressed-air gun (code Y4Z)	Ac4, An, Ar	A 960 581 03 04

Care kit



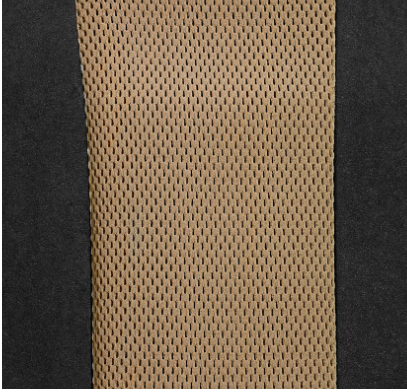
B6 684 8618

Brilliant gloss and clear visibility: The care set contains care products that you will need when cleaning your vehicle - both on the outside and the inside.

Product benefits	Specifically developed for Mercedes-Benz vehicles; tested for material and environmental compatibility
Package contents	Cockpit lotion, windshield cleaning agent for inside, fast-acting cleaner, polishing cloth, pocket

Article designation	Vehicle	Part number
Truck careset	For all model series	B6 684 8609

Seat covers, climate-controlled seats



Beige/black

Very high protection and wonderfully comfortable: The protective covers protect the seats from wear, damage and soiling. They will also win you over with their outstanding comfort. Simple, non-slip assembly.

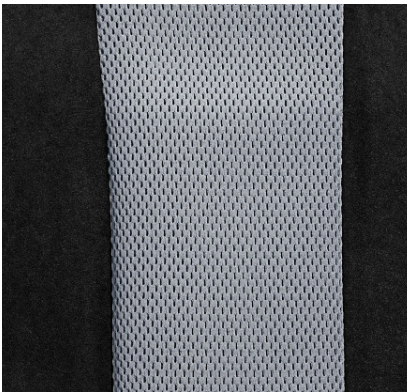
Product benefits Provides for excellent climate control; hard-wearing and low-maintenance; washable up to 40°C; in flame-retardant quality

Installation Easy attachment with zipper

Property Special protective covers for air-conditioned seats

Breathable, beige/black

Article designation	Vehicle	Part number
Grammer climate suspension seat, front left (code D1D)	Ac5, Ac4, An, Ar5, Ar4	B6 640 1277
Grammer climate suspension seat, front right (code D1Q)	Ac5, Ac4, An, Ar5, Ar4	B6 640 1278

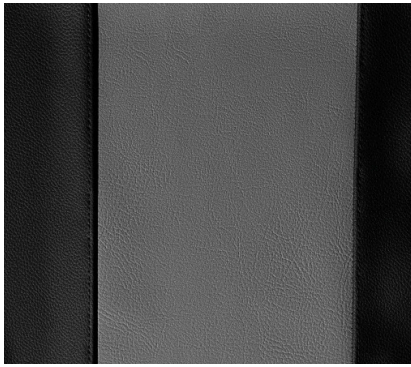


Gray/black

Breathable, gray/black

Article designation	Vehicle	Part number
Grammer climate suspension seat, front left (code D1D)	Ac5, Ac4, An, Ar5, Ar4	B6 640 1275
Grammer climate suspension seat, front right (code D1Q)	Ac5, Ac4, An, Ar5, Ar4	B6 640 1276

Protective covers, imitation leather/fur



Gray/black

Protective cover, imitation leather

Exclusive, tailor-made seat covers made of hard-wearing imitation leather. The sturdy companion for harsh everyday conditions involving dirt, wetness, grease and oil.

Product benefits Hard-wearing and easy to maintain; washable up to 40°C; barely inflammable

Color Gray/black

Installation Easy attachment with zipper

Article designation	Vehicle	Part number
Grammer suspension seat, front left (code D1B, D1C)	Ac5, Ac4, An, Ar5, Ar4	B6 640 1270
Grammer suspension seat, front left (code D1P)	Ac5, Ac4, An, Ar5, Ar4	B6 640 1271
Isri function seat, front right (code D1N)	Ac5, Ac4, An, Ar5, Ar4	B6 640 1272
Isri function seat, front right (code D1A)	Ac5, Ac4, An, Ar5, Ar4	B6 640 1273
Grammer center seat (code D1Z)	Ac5, Ac4, An, Ar5, Ar4	B6 640 1274

Fur protective seat cover

The protective seat cover made from real lambskin creates a cozy atmosphere in the cab.

Product benefits Increases general well-being while driving; the deep-pile wool fleece relieves pressure, remains warm in winter and pleasantly cool in summer, has a relaxing effect, stimulating blood circulation, is breathable, regulates moisture and is skin-friendly, made to measure

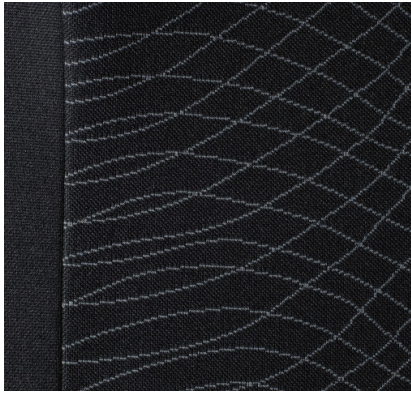
Color Anthracite

Installation Easy installation with custom fitted protective covers

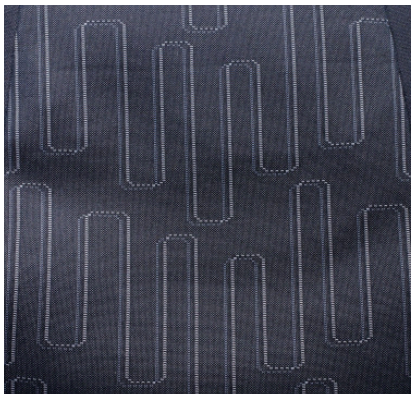
Note Maintain by brushing and vacuuming

Article designation	Vehicle	Part number
Grammer suspension seat, front left (code D1B, D1C)	Ac5, Ac4, An, Ar5, Ar4	B6 640 1180
Grammer suspension seat, front right (code D1P)	Ac5, Ac4, An, Ar5, Ar4	B6 640 1181

Seat covers, series design



Spyder



Skyline

Elegant, hard-wearing seat covers for all color samples used in series production.

Product benefits Hard-wearing and easy to maintain; washable up to 40°C; barely inflammable

Installation Easy to attach with zipper

Spyder

Article designation	Vehicle	Part number
Grammer suspension seat, front left (code D1B)	Ac5, Ac4, An, Ar5, Ar4	B6 640 1360
Grammer suspension seat, front right (code D1P)	Ac5, Ac4, An, Ar5, Ar4	B6 640 1361
Grammer climate suspension seat, front left (code D1C, D1D)	Ac5, Ac4, An, Ar5, Ar4	B6 640 1362
Grammer climate suspension seat, front right (code D1Q)	Ac5, Ac4, An, Ar5, Ar4	B6 640 1363
Grammer center seat (code D1Z)	An, Ar5, Ar4	B6 640 1364
Isri function seat/folding seat, front left (code D1A)	Ac5, Ac4, An, Ar5, Ar4	B6 640 1365
Isri function seat/folding seat, front right (code D1N)	Ac5, Ac4, An, Ar5, Ar4	B6 640 1366
Suspension seat armrest, black (code D1B, D1C, D1P)	Ac5, Ac4, An, Ar5, Ar4	B6 640 1367
Climate suspension seat armrest, black (code D1D, D1Q)	Ac5, Ac4, An, Ar5, Ar4	B6 640 1368
Pillow cover, climate suspension seat, black (code D1D, D1Q)	Ac5, Ac4, An, Ar5, Ar4	B6 640 1369

Skyline

Article designation	Vehicle	Part number
Grammer suspension seat, front left (code D1B)	Ac5, Ac4, An, Ar5, Ar4	B6 640 1370
Grammer suspension seat, front right (code D1P)	Ac5, Ac4, An, Ar5, Ar4	B6 640 1371
Grammer climate suspension seat, front left (code D1C, D1D)	Ac5, Ac4, An, Ar5, Ar4	B6 640 1372
Grammer climate suspension seat, front right (code D1Q)	Ac5, Ac4, An, Ar5, Ar4	B6 640 1373
Grammer center seat (code D1Z)	An, Ar5, Ar4	B6 640 1374
Isri function seat/folding seat, front left (code D1A)	Ac5, Ac4, An, Ar5, Ar4	B6 640 1375
Isri function seat/folding seat, front right (code D1N)	Ac5, Ac4, An, Ar5, Ar4	B6 640 1376
Climate suspension seat armrest, black (code D1D, D1Q)	Ac5, Ac4, An, Ar5, Ar4	B6 640 1368
Pillow cover, climate suspension seat, black (code D1D, D1Q)	Ac5, Ac4, An, Ar5, Ar4	B6 640 1369

Seat covers, workshop



B6 640 1177

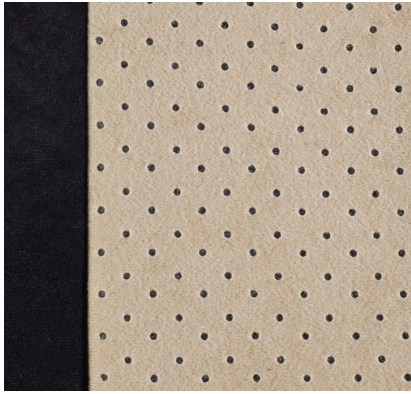
Perfect protection: Seat covers are easy to fit and can be removed again with the flick of a wrist. Ideal protective covering for seats for workshop operations.

Product benefits	Dirt, oil and water-repellent; barely inflammable; easy to wash; sanforized (no shrinkage when washed)
-------------------------	--

Version	Front left/right
----------------	------------------

Article designation	Vehicle	Part number
Protective Workshop seat covers	For all truck model series	B6 640 1177

Seat covers, accessory design



Beige/black



Gray/black

Excellent protection and very high comfort: Seat covers protect the seats from wear, damage and soiling. They will also win you over with their outstanding comfort. Simple, non-slip assembly.

Product benefits High precision of fit; very good seating comfort; low-maintenance handling; washable up to 40° C

Installation Easy attachment with zipper

Material Microfiber velour

Microfiber velour, beige/black

Article designation	Vehicle	Part number
Grammer suspension seat, front left (code D1B, D1C)	Ac5, Ac4, An, Ar5, Ar4	B6 640 1265
Grammer suspension seat, front right (code D1P)	Ac5, Ac4, An, Ar5, Ar4	B6 640 1266
Isri function seat, front right (code D1N)	Ac5, Ac4, An, Ar5, Ar4	B6 640 1267
Driver's seat, fixed seat, Standard, front left (code D1A)	Ac5, Ac4, An, Ar5, Ar4	B6 640 1268
Grammer center seat (code D1Z)	Ac5, Ac4, An, Ar5, Ar4	B6 640 1269

Microfiber velour, gray/black

Article designation	Vehicle	Part number
Grammer suspension seat, front left (code D1B, D1C)	Ac5, Ac4, An, Ar5, Ar4	B6 640 1260
Grammer suspension seat, front right (code D1P)	Ac5, Ac4, An, Ar5, Ar4	B6 640 1261
Isri function seat, front right (code D1N)	Ac5, Ac4, An, Ar5, Ar4	B6 640 1262
Driver's seat, fixed seat, standard, front left (code D1A)	Ac5, Ac4, An, Ar5, Ar4	B6 640 1263
Grammer center seat (code D1Z)	Ac5, Ac4, An, Ar5, Ar4	B6 640 1264

Back and neck supports



B6 753 0140



B6 753 0141

Seating accessories

Sitback back supports

The Sitback backrest offers comfort and effective relief for the lumbar spine. Individual setting with pneumatic operation.

Product benefits To support an ergonomic sitting posture; can be individually adapted to the driver

Material Fabric

Installation Mounting with two brackets between seat cushion and backrest on seat

Article designation	Vehicle	Part number
Sitback Air back cushion	For all model series	B6 753 0140

Sitback neck supports

The neck cushions for all seats with an integrated head restraint ensure a relaxing posture. In addition, they act as additional padding to the existing head restraints.

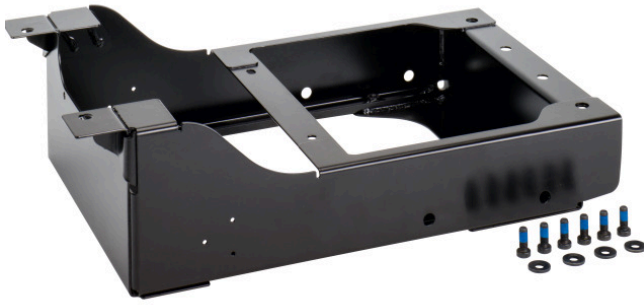
Product benefits Ergonomic design; extra comfort

Material Fabric

Installation Easy attachment with velcro strip

Article designation	Vehicle	Part number
For integral seats (integrated head restraint) - also suitable for passenger cars	For all model series	B6 753 0141
For attachable head restraints - also suitable for passenger cars	For all model series	B6 753 0142

Lowered seat base



B6 684 8643

Safe and comfortable on the road: with the seat base lowered by 40 mm, you can completely individually adjust your seat position from the driver's seat. The standard seat base is replaced by a lowered version.

Product benefits	More comfort; individual driver's seat settings; allows a greater adjustment range of the driver's seat
Package contents	1 × lowered seat box, 6 × cylinder screw, 4 × washer
Note	Prerequisites code F2N or code F2P + code F2G or code F2H
Additional information	Matching seat box cover available in two color variants (B6 768 1251, B6 768 2244)

Article designation	Vehicle	Part number
Lowered seat base	Ac5, Ac4, An, Ar	B6 684 8643

Seat base covering



B6 768 1250



B6 768 1250

Seating accessories

Sitting pretty: the seat base panels protect the driver from the cold in winter and enhance the look of the vehicle interior.

Product benefits	Creates a living environment; protects against the cold; no slipping due to appropriate back coating of the velour and adhesion of the seat base cover on the seat base
Material	High-quality pearl velour
Installation	8 Velcro connections to permit attachment to the seat cushion ensure easy installation and removal
Note	Identical for seat bases of driver and front passenger seat

Seat box cover, anthracite

Property	With stitched-on Mercedes star. Border in black nubuck with contrast seam in almond beige
-----------------	---

Article designation	Vehicle	Part number
Seat base covering	Ac5, Ac4, An, Ar5, Ar4	B6 768 1250
Seat box cover for lowered seat box	Ac5, Ac4, An, Ar5, Ar4	B6 768 1251

Seat box cover, black

Property	With stitched-on Mercedes star. Enclosure in black nubuck, with silver contrasting seam
-----------------	---

Article designation	Vehicle	Part number
Seat base paneling	Ac5, Ac4, An, Ar5, Ar4	B6 768 2243
Seat base cover for lowered seat base	Ac5, Ac4, An, Ar5, Ar4	B6 768 2244

Seat belt, red



Adds color to the cockpit: the red seat belt lends a sporty look and facilitates visual inspection from outside.

Product benefits Easier visual inspection from outside

Additional information Compliance with legal specifications

Article designation	Vehicle	Part number
Seat belt, red, without left seat belt tensioner, valid only to left-hand drive vehicles, code Z5X, only in combination with code D1C (driver's suspension seat, comfort) or code D1D (driver's suspension seat, air conditioning), not in combination with code S3A (airbag, driver)	Ac5, Ac4, An, Ar5, Ar4	A 005 860 24 85
Seat belt, red, without seat belt tensioner, right, only for left-hand drive vehicles, code Z5X, only in combination with code D1P comfort seat, passenger or D1Q climate seat, passenger	Ac5, Ac4, An, Ar5, Ar4	A 005 860 25 85
Seat belt, red, with seat belt tensioner, left, only for left-hand drive vehicles, code Z5X, only in combination with code S3A (airbag, driver) and code D1C (driver's suspension seat, comfort) or code D1D (driver's suspension seat, air conditioning)	Ac5, Ac4, An, Ar5, Ar4	A 005 860 26 85
Seat belt, red, with seat belt tensioner, right, for right-hand drive vehicles, code Z5W, only in combination with code S3A (airbag, driver) and code D1C (driver's suspension seat, comfort) or code D1D (driver's suspension seat, air conditioning)	Ac5, Ac4, An, Ar5, Ar4	A 005 860 27 85

Swiveling table



[B6 626 0331](#)

Practical and space-saving: The height-adjustable swiveling table is perfect to eat at, to work on with a laptop or to use as a practical storage space.

Product benefits	Space-saving; swiveling; height-adjustable; matched to the geometry of the center console
Material	The tabletop surface has a leather grain
Load	Max. 2.5 kg
Installation	Mounted in beverage holder and on the center console

Article designation	Vehicle	Part number
Swiveling table	Ac5, Ac4	B6 626 0331



The new service innovation Mercedes-Benz Uptime

With intelligent networking of vehicles, Mercedes-Benz Service and your shipping company, Mercedes-Benz Uptime is setting new benchmarks. This enables significantly increased predictability of workshop visits and a greater availability of vehicles.



Your advantages at a glance:

- Prevents avoidable immobility cases: prevents breakdowns and reduces organizational stress
- Efficient management of repairs and maintenance: minimizing workshop visits and non-operational times in the workshop
- Real-time support for repair measures: avoiding unnecessary workshop visits and repair costs

More information at:

www.mercedes-benz.com/uptime

The electrics/electronics.



Work efficiently.

Mercedes-Benz stands for tested quality in electrics and electronics. The first step is to retrofit the sideguard assist (code S1R).



Sideguard assist (retrofitting code S1R)



Effective collision warning when turning or changing lanes



If there is immediate danger of collision, the assistant will warn the driver



Yellow LED warning display



Red LED display

The sideguard assistant from Mercedes-Benz warns the driver visually and acoustically of dangers when turning in critical situations with restricted visibility. Even more: It takes the tracking pattern of the semitrailer into account and warns of potential collisions with stationary obstacles such as traffic lights or lampposts identified by the system. Moreover, it supports the driver when making a lane change. The visual and acoustic signals provide the driver with valuable time to react.

With its two-stage warning system, the turning assistant helps to defuse critical traffic situations. To this end, two short range sensors constantly monitor the front passenger side – along the entire length of the vehicle (up to max. 18.75 m) and over a lane width (approx. 3.75 m). If there is a moving object in the monitoring zone on the right-hand side, a yellow, triangular LED lights up in the A-pillar on the front passenger side in the driver's line of sight. When there is danger of collision, the LED light flashes red multiple times with increased brightness, then stays red after two seconds. An additional warning tone sounds from radio speakers on the side of the hazard in case of danger of collision. Less common, but just as serious: turning accidents with stationary cyclists or pedestrians. The assistant also warns of acute risk of accident with stationary persons and objects. An immediate warning is given in form of a red LED display immediately when an acute risk of accident is detected (within the system limits). This function only detects hazards within the tracking pattern of the vehicle. This function is not a parking assistance system: it is not designed for parking maneuvers.

Product benefits

System can help to increase road safety; supports the driver in confusing turning maneuvers; helps to mitigate critical traffic situations

Validity

The retrofitting Sideguard Assist is available for Econic left-hand drive vehicles (code Z5X) from 01.2017

Vehicle

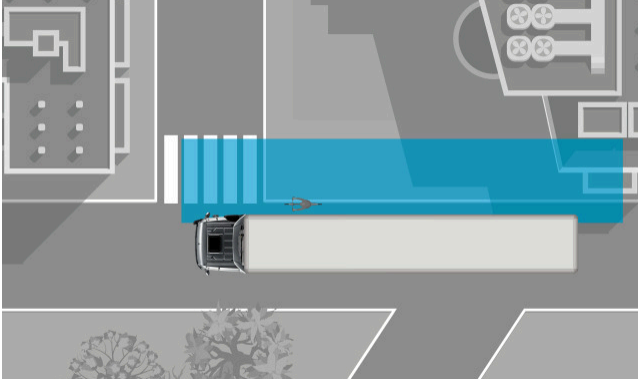
Ac5, Ac4, An, Ar5, Ar4

Note

In order to be able to propose a vehicle-specific offer, please contact your Mercedes-Benz partner; who will be happy to advise you

Safety assist systems

Sideguard assist S6F permanently active



[A 000 827 96 59](#)

The S1R Sideguard Assist can no longer be deactivated by the driver in the on-board computer menu and is therefore permanently active.

Note Only in combination with code S1R

Article designation	Vehicle	Part number
Sideguard assist permanently active (code S6F)	Ac5, Ac4, Ar5, Ar4, An	A 000 827 96 59

Basic cornering assist system



The basic sideguard assist system is an object recording system to avoid collision on the basis of a 24-GHz radar system. The system can increase the safety of unprotected road users when turning over the passenger side of medium and heavy commercial vehicles (> 3.5 t). In this case, the driver is informed and warned both visually and acoustically if a moving object is located in the lateral monitoring zone. The radar sensor uses frequency modulation to measure speed, reflectivity (back reflection), angle and other parameters of several target objects simultaneously. This makes it possible to distinguish between unprotected road users and other objects. In contrast to ultrasonic-based systems, there are far fewer false alarms. The driver thus receives a reliable aid that increases safety when turning. The radar sensor is insensitive to environmental influences such as rain, snow and dirt and works day and night. It has a permanent integrated self-test function (BIST). False alarms caused by stationary objects, such as traffic signs or trees, are reduced to a minimum.



Product benefits	Reduction of the risk of accidents with other road users; distinction between moving and stationary objects; the radar-based system does not work in fog, darkness and at dawn/dusk; the radar sensor is insensitive to contamination; proven robust technology
-------------------------	---

Note	In order to be able to propose a vehicle-specific offer, please contact your Mercedes-Benz partner, who will be happy to advise you
-------------	---



Safety assist systems

Camera systems



B6 782 1275, B6 782 1269



B6 782 1281



B6 782 1280

Provides a better overview: The reversing camera system allows you to see the area directly behind the vehicle, thus increasing safety and preventing accidents.

Product benefits Improved accident protection; accurate approaching when reversing and maneuvering; cable and connector systems are hazardous goods transportation compatible; watertight camera housing (protection class IP 69K); integrated heater

Function System is automatically activated when the reverse gear is engaged

Note Currently, a second person is obligatory as a guide; in combination with code J9J (pre-installation for reversing camera), the video-enabled instrument cluster acts as a display, code J1C (12.7 cm color display)

Article designation	Vehicle	Part number
Reversing camera without overlay	Ac4, An, Ar4	B6 782 1275
Reversing camera with overlay	Ac4, An, Ar4	B6 782 1269
Adapter cable (in combination with code J9J)	Ac5, Ac4, An, Ar5, Ar4	B6 753 0171
Multicable 5 m	Ac5, Ac4, An, Ar5, Ar4	B6 782 1277
Multicable 11 m	Ac5, Ac4, An, Ar5, Ar4	B6 782 1278
Multicable 16 m	Ac5, Ac4, An, Ar5, Ar4	B6 782 1279
Multicable 21 m	Ac5, Ac4, An, Ar5, Ar4	B6 782 1280
Helix cable	Ac5, Ac4, An, Ar5, Ar4	B6 782 1281
Camera without overlay 120° aperture angle	Ac5	B6 782 1333
Camera without overlay 100° aperture angle	Ac5	B6 782 1332
Magnetic footrest	Ac5, Ac4	B6 782 1331
Adapter cable for four cameras	Ac5, Ar5	B6 782 1335

SurroundView



Safety assist systems



B6 782 1267

For a more comprehensive all-round view: This 7" TFT monitor with its high-quality LED backlight and outstanding image quality was especially developed for use in commercial vehicles and offers the advantages of a perfect SurroundView display.

Product benefits It can display up to four cameras that are mounted at random places on the vehicle in one monitor image, thus enabling the driver to get a better overview when driving and maneuvering (e.g. in tight driving situations)

Function Meets all the high requirements for commercial vehicles such as dust tightness, IP6K5 jet water protection, a -30° C to +85° C temperature range; an integrated control unit for automatic trailer recognition; a brightness sensor for automatic day/night switchover as well as an adjustable overlay for distance visualization; connection of up to four cameras possible; cables of different lengths connect the cameras to the monitor; the buttons on the monitor make it easy to configure

Package contents 1 modular SV monitor, multipoint connector connection, sturdy and flexible adjustable monitor holder

Article designation	Vehicle	Part number
7" additional monitor for SurroundView	For all model series	B6 782 1267

Adapter cable and adapter



B6 753 0151



B6 753 0152



A 000 545 39 84

Adapter cable and adapter for power supply between semitrailer tractor and trailer or semitrailer.

Product benefits	Contact reliability and water-tightness; simple and efficient installation
Adapter cable	15-pin (V ADR) plug (connector) in accordance with ISO 12098 (24 V), 7-pin socket in accordance with ISO 1185 (24 V, normal, black) and ISO 3731 (24 V, addition, white)
Usage	From socket (ISO 12098) on tractor to a separate connector (ISO 1185 and ISO 3731) on trailer/semitrailer

Article designation	Vehicle	Part number
Adapter cable, 24 V, 15-pin to 2 x 7-pin	Ac5, Ac4, An, Ar5, Ar4	B6 753 0151
Short adapter, 24 V, 15- to 2 x 7-pin, without cable	Ac5, Ac4, An, Ar5, Ar4	B6 753 0152
24 Volt adapter, 15-pin to 2 x 7-pin, with spiral line (Code E6E)	Ac5, Ac4, An, Ar5, Ar4	A 000 545 39 84

Adapters/cables/connections

Trailer socket, 24 V



A 000 540 27 39



A 000 540 38 39

For a secure power supply between the tractor and trailer or semitrailer. The socket supplies, for example, the illumination, rear headlamps or brake lamps with power.

Technical data	24 Volts; assignment 5 x 1,5 mm ² and 2 x 4 mm ² ; 15-pin ABS/EBS (ISO 7638); length 450 cm
-----------------------	---

Article designation	Vehicle	Part number
Trailer socket 24 Volts, 15-pin	Ac5, Ac4, An, Ar5, Ar4	A 000 540 27 39
Trailer socket 24 Volts, 7-pin	Ac5, Ac4, An, Ar5, Ar4	A 000 540 38 39

Audio/video adapter set



B6 753 0173



B6 753 0174

Adapters/cables/connections

Very good connection for outstanding entertainment: the audio-adapter set consists of an extension cord to externally connect video units such as DVD players to the radio.

Audio adapter set	
Product benefits	Adapters were specially developed for Mercedes-Benz radios
Property	Line-in adapter and mute adapter/ISO plugs and cinch couplings; for the audio output of external devices via onboard speakers and for muting; suitable for TV, navigation (announcement), external hands-free system etc. (in combination with code J2A-J2E)

Article designation	Vehicle	Part number
Audio adapter set	Ac4, An, Ar4	B6 753 0173

Video adapter set	
Product benefits	Adapters were developed specially for Mercedes-Benz, also suitable for reversing camera connection
Property	Coax socket casing - FAKRA code F (brown) and code E (green); cinch coupling, black and yellow/video-in and video-out; for connecting external video units; suitable for Playstation, Wii, video camera, TV etc. (in combination with code J2D)

Article designation	Vehicle	Part number
Video adapter set	Ac4, An, Ar4	B6 753 0174

Power connector



B6 753 0129

Secure connection: power connector to safely supply electrical devices with high power consumption (e.g. kettle). Suitable for power consumption of up to 25 Ampere.

Product benefits	Secure fit of the plug; secure connection both magnetically and mechanically; current only flows when the mechanical connection is closed; 50 % smaller installation depth than standard socket outlet; short-circuit-proof
-------------------------	---

Technical data	2.5 mm ² wiring in red and brown; line sheathing; "flying" 25 A fuse
-----------------------	---

Package contents	Cable set, fuse, socket, ring eyelet
-------------------------	--------------------------------------

Power connector	(MagCode) Power Clip Pro 24 V (connection: threaded connection)
------------------------	---

Article designation	Vehicle	Part number
Power connector	Ac5, Ac4, An, Ar5, Ar4	B6 753 0129

Plug and socket, ABS/EBS



B6 753 0158



B6 753 0159

The ABS/EBS plug and mains outlet (certified according to ISO 7638) for the standard cable are ADR/GGVS-compatible. The mains outlet's rear exit is straight.

Product benefits	System specially adapted to the intended use; simple and rational installation; high-quality laminated contacts with crimp connection
-------------------------	---

Technical data	With 9 crimp contact bushes (5 x 1.5 mm ² , 2 x 4 mm ² and 2 x 6 mm ²)
-----------------------	--

Note	Suitable for all systems (e.g. 5-pin with 2x 6.0 mm ² , 7-pin with 2x 4.0 mm ² , etc.)
-------------	--

Article designation	Vehicle	Part number
ABS/EBS plug	Ac5, Ac4, An, Ar5, Ar4	B6 753 0158
ABS/EBS socket	Ac5, Ac4, An, Ar5, Ar4	B6 753 0159

Plug and socket, 15-pin



B6 753 0163



B6 753 0164

The plug (certified according to ISO 12098) for the standard cable and the mains outlet (ISO 12098) for the standard and corrugated pipe are ADR/GGVS-compatible. The mains outlet's rear exit is straight.

Product benefits	High-quality laminated contacts with crimp connection; simple and rational installation; contact reliability and water-tightness
-------------------------	--

Technical data	Crimp connections (12 x 1.0 - 1.5 mm ² and 3 x 2.5 mm ²)
-----------------------	---

Article designation	Vehicle	Part number
Connector, 15-pin, 24 V ADR	Ac5, Ac4, An, Ar5, Ar4	B6 753 0163
Socket, 15-pin, 24 V ADR	Ac5, Ac4, An, Ar5, Ar4	B6 753 0164

Jumper cable, 24 V



B6 753 0150

Perform starting procedure safely: jumper cable with integrated protective circuit to suppress inductive voltage peaks and four completely insulated crocodile clamps in a convenient bag.

Product benefits Sturdy vulcanized ribbon conductors with rip-out protection, reduced arcing, corresponds to DIN 72 553, plugs and connectors watertight and vulcanized

Technical data 24 V, up to 1000 A, 50 mm² wire cross-section, 5 m length

Article designation	Vehicle	Part number
Jumper cable, 24 V	Ac5, Ac4, An, Ar5, Ar4	B6 753 0150

USB extension cord



B6 753 0172

Music like clockwork: Extension cord for connecting external USB devices such as an MP3 player or memory stick to the radio of the Actros, Antos and Arocs (in combination with code J2A - J2E).

Product benefits Specially developed for Mercedes-Benz radios

Technical data USB A-jack, mini-USB connector

Length 65 cm

Article designation	Vehicle	Part number
USB extension cord	Ac4, An, Ar4	B6 753 0172

Voltage reduction adapter



B6 753 0167

Versatile: Voltage reduction adapter for the operation of 12 Volt trailers, to be used from a 24 Volt on-board electrical system as short adapter.

Product benefits	Automatic reset in case of overcurrent/ overtemperature; compatible with lamp control devices; correct function of the ABS info module is ensured
-------------------------	---

Usage	From 15-pin 24 V to 13-pin 12 V
Note	Only for bulbs

Article designation	Vehicle	Part number
Voltage reduction adapter	Ac5, Ac4, An, Ar5, Ar4	B6 753 0167

Thermal paper/bulk package of thermal paper



B6 782 1244

Printouts on heat-resistant thermal paper remain legible, even after coming into contact with water or engine oil.

Product benefits	Heat resistant, remains legible, even after coming into contact with water or engine oil.
-------------------------	---

Package contents	Packages with 3 rolls each of 8 m or as bulk package with 20 packages with 3 rolls each
-------------------------	---

Article designation	Vehicle	Part number
Single package of thermal paper (3 rolls of 8 m each)	Ac5, Ac4, An, Ar5, Ar4	B6 782 1244
Bulk package of thermal paper (20 packages with 3 rolls each)	Ac5, Ac4, An, Ar5, Ar4	B6 782 1243

Antennas



A 906 905 48 00



B6 782 1321

Always good reception with antennas and antenna accessories for your truck. Your Mercedes-Benz Service Partner is happy to advise you.

Article designation	Vehicle	Part number
AM/FM 20° antenna base	Ac5, Ac4, An, Ar5, Ar4	A 002 827 03 01
AM/FM/FZV433MHz/telephone 20° antenna base	Ac5, Ac4, An, Ar5, Ar4	A 002 827 05 01
CB radio antenna base, 6°	Ac5, Ac4, An, Ar5, Ar4	A 002 827 07 01
CB radio antenna base, 20°	Ac5, Ac4, An, Ar5, Ar4	A 002 827 08 01
Antenna rod, 280 mm, radio/telephone, 20°	Ac5, Ac4, An, Ar5, Ar4	A 002 827 06 01
Antenna rod, 435 mm, CB radio, 6°/20°	Ac5, Ac4, An, Ar5, Ar4	A 002 827 09 01
GSM/GPS FleetBoard/navigation antenna, line length 1450 mm	Ac5, Ac4	A 906 905 48 00
Shortened AM/FM antenna rod, 234 mm, for car transporter	Ac5, Ac4	B6 782 1321

Bluetooth CD radio



[A 004 820 54 86](#)

Excellent infotainment: If required, other mobile devices such as MP3 players can also be connected. Bluetooth CD radio with integrated hands-free system via Bluetooth interface. The driver can thus keep his/her hands on the steering wheel.

Product benefits	Functionality, reception and sound quality are completely guaranteed, clean processing, without damage to the interior equipment through retrofitting of the code EU2, easy operation of the CD radio
-------------------------	---

Technical data	Radio with 4 wavebands: MW, FM, LW, SW; CD player (Audio CD, MP3, WMA formats); CAN interface for display in instrument cluster; access to address book (with code EU2) via MFL - display in instrument cluster
-----------------------	---

Operating voltage	24 V
--------------------------	------

Article designation	Vehicle	Part number
Bluetooth CD radio	Ac5, Ac4	A 004 820 54 86

Spare bulb boxes

Small and large bright spots: contain all required reserve lamps and fuses in a stable box.

Product benefits	Stored safe and compact in a handy box; put together in a way that is model series independent
Package contents	All required spare bulbs for the main headlamps, front fog lamps, turn signal lamps, interior illumination, etc.
Note	Important: Many European countries mandate that you have this equipment in your vehicle when traveling



B6 683 0022, B6 683 0021

Article designation	Vehicle	Part number
Spare bulb box, H7, small	Ac5, Ac4, An, Ar5, Ar4	B6 683 0022
Spare bulb box, H7, large	Ac5, Ac4, An, Ar5, Ar4	B6 683 0021

Content of spare bulb boxes

Spare bulb box, H7, small	Spare bulb box, H7, large		Content of spare bulb boxes
-	1x	H1	High-beams
1x	2x	H7 LHD	Low beams
-	-	H4	Low beams
2x	3x	P21W	Rear: Turn signal lamps, tail lamps, brake lights
1x	3x	R10W	License plate number, side position, tail lights
1x	1x	PY21W	Front turn signal
-	1x	C5W	Marking at left, right front on wind deflector
1x	2x	W5W	Entrance standing lights
1x	2x	Fuse 10A	
1x	2x	Fuse 15 A	
1x	1x	Fuse 20 A	
1x	1x	Fuse 25 A	

CB radio universal, 12 Volt



B6 683 0017

At home on every channel: Universal CB radio with 3 switchable national frequency tables. With ASC (automatic smoke barrier) and microphone with up and down buttons for selecting the channel.

Technical data 3 switchable national frequency tables: 80 channels FM, 4 W/12 channels AM, 1 W/40 channels FM, 4 W/40 channels AM, 1 W/40 channels FM, 4 W/CEPT

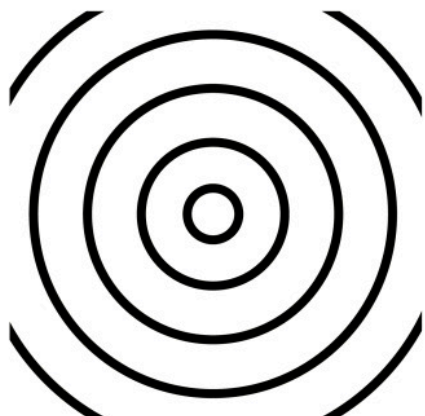
Operating voltage 12 V

Article designation	Vehicle	Part number
CB radio universal, 12 Volt	Ac5, Ac4, An, Ar5, Ar4	B6 683 0017
Spare microphone for universal CB radio	Ac5, Ac4, An, Ar5, Ar4	B6 683 0016

CB radios



Emergency call system ERA-Glonass



ERA GLONASS

[A 000 820 55 85](tel:A0008205585)

The ERA-Glonass emergency call system is required by law in Russia for all trucks riding on their own axles.

Product benefits	Meets the requirements of statutory provision "Technical Regulation of the Customs Union TR CU 018/2011 on the safety of wheeled vehicles"
Validity	Relevant for the countries Russia, Belarus, Kazakhstan, Armenia, Kyrgyzstan, Azerbaijan, Georgia, Moldova, Tajikistan, Turkmenistan, Uzbekistan and Ukraine
Note	Not in combination with code D0Z (SoloStar concept), code D7V (table on front passenger side) and code J9F (preinstallation of 12-V radio)

Description	Vehicle	Part number
Emergency call system ERA-Glonass	Ac5, Ac4, Ar5, Ar4	A 000 820 55 85

Emergency call system

Mobile phone cradle iPhone (code EU3)



B6 782 1306

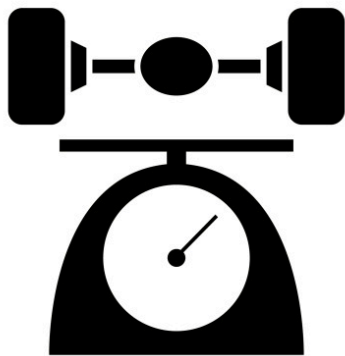
Conveniently operate your mobile phone from the multifunction steering wheel: The charging cradle enables a connection to be made with the external antenna of your vehicle. The battery is also recharged. The fixed support guarantees that the iPhone 3G, 3GS, 4 or 4S is safely held in place even during the drive.

Product benefits

Charging of the rechargeable battery;
better reception due to connection with
the outside antenna

Article designation	Vehicle	Part number
Mobile phone charging cradle (for the iPhone 3G, 3GS, 4, 4S)	Ac4, An, Ar4	B6 782 1306

Axle load measuring device (code J3Z)



The axle load measuring device electronically records the current individual axle loads of all air-sprung axles. Sensors in the air suspension supports determine the respective load values as soon as the air suspension is brought in the drive position.

Product benefits

Easy operation and safety for the driver in the event of weight-critical vehicle loading thanks to the display of actual axle loads on the Driver Information System; increased road safety by avoiding overloading the vehicle; contributes to value preservation of the vehicle by preventing overloading and related damage

Additional information

This retrofitting set is applicable only in combination with Roll Control Assist (code S1F) and air-sprung front axle (code A1A). Retrofitting the axle load measuring device (code J3Z) is also possible for other vehicle configurations. Please contact your Mercedes-Benz Partner, who will be happy to advise you

Note

The system is not verifiable

Article designation	Vehicle	Part number
Retrofitting the axle load measuring device (code J3Z)	Ac4, An, Ar4	A 000 827 83 59
Parts kit pressure sensor	Ac4, An, Ar4	A 012 542 37 18

Predictive Powertrain Control - PPC (code G0T)



The forward-looking Tempomat predictive powertrain control (PPC) lowers the fuel consumption by up to five per cent, which in turn verifiably reduces the total operating costs of a truck. As the world's first GPS Tempomat, the PPC doesn't just regulate the speed in general. The system uses momentum peaks on slopes on the basis of three-dimensional maps, releases the accelerator in a timely manner before summits are reached, engages with the gearshift system and uses the transmission's EcoRoll neutral position to minimize consumption. Thanks to a perfect knowledge of the route and the vehicle, this in turn always results in a far-sighted manner of driving. It takes about 2.5 hours to install the PPC. There is no need for an acceptance issued by the TÜV or any other testing organization.

Product benefits Depending on the topography, the fuel consumption ends up being reduced by up to five percent, and the driver turns out to be considerably unburdened; the highest level of efficiency can be attained by subsequently using updated map and data material to guarantee up-to-dateness; in addition to all of this, the considerably lower CO2 emissions ensure that the environment is protected as well

Property The new PPC retrofit package (PPC: Predictive Powertrain Control) is even more beneficial thanks to improved software and expanded map data

Additional information Prerequisite: from production date 08.2012, Mercedes PowerShift 3 (code G5G). Exclusions: Hydraulic Auxiliary Drive (code A1H), secondary coolant-retarder (code B3H), drive train 44 t to 80 t (code G0B), drive train, 44 t to 120 t (code G0C), drive train, customer requirement greater than 120 t (code G0D), drive program municipal (code G0S), drive program fire-service (code G0X), Transmission G 280-16/11,7-0,69 (code G2D), Turbo-Retarder-coupling (code G3Y), all-wheel drive

Article designation	Vehicle	Part number
PPC retrofit package	Ac4, An, Ar4	A 000 446 31 75

Retrofitting

Predictive Powertrain Control Update



Lower your truck's consumption by up to 7% by retrofitting a PPC (PPC: predictive powertrain control): This innovative system combines GPS data and topographical maps with the fully-automated Mercedes PowerShift 3 transmission. The Tempomat is used to adapt the gear selection and speed to your individual route-related circumstances in a far-sighted and fully-automated manner.

Product benefits

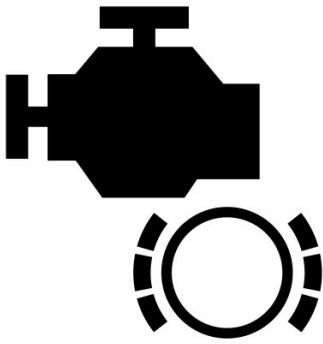
Fuel saving through unchanged average speed from up to 7%; optimized shifting comfort thanks to automated adaptation to the topography through: Predictive rolls in neutral (EcoRoll) in light downhill gradients. Shift in advance into suitable gear before a downhill gradient. Upshift in advance before hill tops. Avoidance of any unnecessary downshifting in uphill gradients or of shifting on steep, short uphill gradients. Usable on 95% of European freeways and federal highways. Shift in advance into suitable gear before a downhill gradient

Prerequisite

Older generation PPC (code G0T) up to around 10/2016 or PC retrofitting packages B6 683 0049 (control unit part numbers: A 000 446 0375, A 000 446 0475 or A 000 446 0575)

Article designation	Vehicle	Part number
PPC update	Ac4, An, Ar4	A 000 827 35 03

High Performance Engine Brake (code M5V)



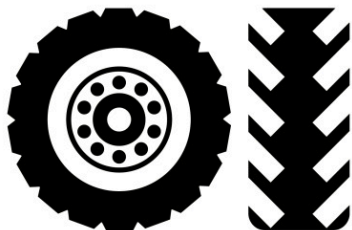
Increase the braking force of your engine brake and thus improve the wear-free braking. Up to 85 % of the braking work can be performed with the High Performance Engine Brake.

Product benefits Up to 37% more brake force compared to the standard engine brake (that is up to 130 kW more braking power in the OM473)

Note The standard engine brake (code M5U) is a prerequisite for retrofitting the High Performance Engine Brake

Article designation	Vehicle	Part number
Data medium for retrofitting High Performance Engine Brake (code M5V) model 963/964	Ac5, Ac4, An, Ar5, Ar4	A 000 827 76 59

Drive program "offroad" (code G0W)



The "offroad" transmission mode is specially designed for off-road use and a very powerful driving style is supported.

Product benefits

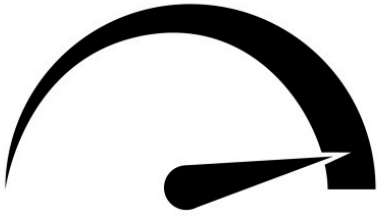
Seamless start without operating accelerator pedal even on inclines thanks to the crawler mode; reduced maintenance and operation costs as well as protection of the entire drivetrain with optimized clutch and gear change sequences; increased driving safety downhill thanks to the overrun mode's detection with inclination sensor, preventing upshifts when driving downhill; highest possible power transmission when using the roof-mounted superstructures (dump truck etc.)

Property	Crawl function for sensitive maneuvering, rpm increase by 100 rev./min. in order to avoid shift operations and thus interruption of tractive power, the suppression of upshift when driving at inclines, rocking mode as well as fast reversing with four reverse gears
Validity	The drive program has been optimized for use with a total vehicle weight of up to 120 t
Note	Requirement code G5G (Mercedes PowerShift 3)

Article designation	Vehicle	Part number
Data storage medium for retrofitting the "offroad" drive program (code G0W)	Ar4	A 000 827 67 59

Drive program "power" (code G0V)

The "power" transmission mode is designed for on-road use in long distance haulage and a very nimble driving style is supported.



Product benefits Individual, optimal adaptation of drive program for use thanks to two transmission modes that support both a fuel-efficient and nimble driving style; relieving the driver of driving routines with automated functions for disengaging the clutch, shifting up or down, and engaging the clutch; reduction of maintenance and operating costs and protection of entire drivetrain with optimized clutch operation and gear change sequences

Property The rotational speeds will be increased by 100 rpm compared to standard mode for all shift operations

Validity The transmission mode is optimized for use with a gross vehicle weight of up to 150 t

Note Requirement code G5G (Mercedes PowerShift 3)

Article designation	Vehicle	Part number
Data medium for retrofitting drive program "power" (code G0V)	Ac4, An, Ar4	A 000 827 65 59

"Economy" drive program (G0U)



The "economy" transmission mode is designed for on-road use in long-distance haulage and a driving style that is extremely fuel-efficient is supported and preserves the vehicle.

Product benefits Supports an extremely fuel-efficient driving style that preserves the materials of the vehicle; relieves the driver of shifting routines with automated functions for disengaging the clutch, shifting up or down, and engaging the clutch; reduction of maintenance and operating costs through optimized clutch and shifting operation to protect the entire drivetrain

Property When the cruise control is activated, the maximum speed is limited to 85 km/h, the kickdown function is suppressed and EcoRoll mode is permanently enabled

Validity The drive program has been optimized for use with a total vehicle weight of up to 44 t

Article designation	Vehicle	Part number
Data medium for retrofitting drive program "economy" (code G0U)	Ac4, An, Ar4	A 000 827 64 59

Drive program "fleet" (code G0Z)

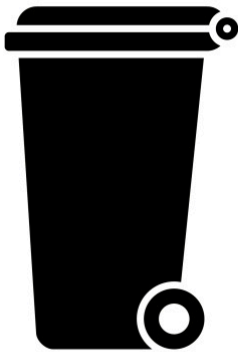


The drive program "fleet" is a fuel-saving variant of Mercedes PowerShift which was developed for fleet customers in long-distance haulage. It has only the economy shift mode and is limited to a maximum speed of 85 km/h.

Product benefits	Reduction of fuel consumption due to omission of high-consumption modes; supports the driver in achieving a fuel-efficient driving style
Property	The kick-down function and manual transmission mode are omitted. The button on the right-hand pitman arm for selecting the transmission mode is nonfunctional
Note	The amount of the fuel saved depends heavily on the purpose, topography and the driving style. requirement code G5G (Mercedes PowerShift 3)

Article designation	Vehicle	Part number
Data storage medium for retrofitting the "fleet" drive program (code G0Z)	Ac4, An, Ar4	A 000 827 66 59

Drive program "municipal" (code G0S)



With the drive program "municipal" for waste disposal vehicles, the drive programs standard and special automation can be selected. The drive program "municipal" contains the following adaptations: parameterized start-off gear intended for collection: second gear, EcoRoll, creeping and clutch strain warning are deactivated ex works.

Product benefits The 'municipal' drive program is specially adapted to the requirements of the waste management sector

Note Requirement code G5G (Mercedes PowerShift 3)

Article designation	Vehicle	Part number
Data medium for retrofitting drive program "municipal" (code G0S)	Ac4, An, Ar4	A 000 827 68 59

Drive program "fire-service" (code G0X)



The “fire service” drive program has been designed for use by the fire department and supports the acceleration and dynamics of the vehicle.

Product benefits Permanent, dynamic drive program adapted to the requirements of the fire brigade with complete utilization of engine power and torque without considering the fuel consumption; supports a fuel-efficient driving style by selecting the standard program via the menu; automated functions for disengaging the clutch, shifting up or down, and engaging the clutch relieve the driver of routine driving decisions; reduction in maintenance and operating costs and protection of entire drivetrain with optimized clutch operation and gear change sequences

Property The switching point selection, the gearshift dynamics are shifted in such a way that the maximum dynamic thrust force is achieved in every driving situation. Thus, specifications for fire-fighting vehicles are thus fulfilled as per DIN 1846-2

Validity The drive program has been optimized for use with a total vehicle weight of up to 44 t

Note Special functions which are not required for airfield fire engines are not contained

Article designation	Vehicle	Part number
Data medium for retrofitting drive program “fire-service” (code G0X)	Ac4, An, Ar4	A 000 827 70 59

Drive program “heavy” (code G0Y)



The “heavy” drive program is a functional supplement to the standard transmission mode, and supports a very forceful driving style at the push of the button.

Product benefits Individual, optimal adaptation of drive program for use thanks to two transmission modes that support both a fuel-efficient and forceful driving style; relieving the driver of driving routines with automated functions for disengaging the clutch, shifting up or down, and engaging the clutch; reduction of maintenance and operating costs and protection of entire drivetrain with optimized clutch operation and gear change sequences

Property Compared to the standard mode, the engine speed for all shift operations is increased by 100 rev./min

Validity The drive program "heavy" is only available for heavy-duty trucks

Note Known scopes such as manual mode and rocking mode etc. are retained. This transmission mode is optimized for use with a gross vehicle weight of up to 250 t

Article designation	Vehicle	Part number
Data medium for retrofitting drive program “heavy” (code G0Y)	Ar4	A 000 827 74 59

Remote online (code J6Y)

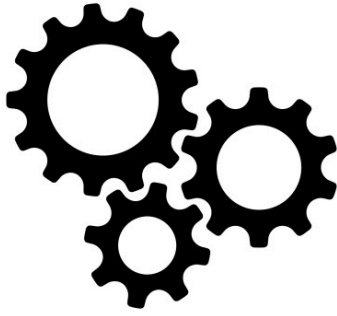


Connect the vehicle to your smartphone. This way, you can look up information relevant to your vehicle very conveniently and control function via the app.

Product benefits	Mobile applications support the users in carrying out their activities in a more efficient and simpler manner; time saving for drivers
Property	Use the app to control from the comfort of your bed: the radio, the sliding roof or interior lights; you can also operate the stationary air conditioner/heater, working lights, etc. from outside; you can also retrieve the following information via this app: total mileage, operating hours of engine, tank level, AdBlue level, outside temperature, inside temperature, supply pressure 1 and 2, tire pressures, temperatures, status of sensors, axle loads, status, doors, loading hatches, service flaps, sliding roof, lock status of doors and sliding roof
Function	The range for using the functions is a max. of 30 m around the vehicle
Note	For retrofitting, the vehicle has to be fitted with Truck Data Center (code J3S/J3T)

Article designation	Vehicle	Part number
Data medium for retrofitting "Remote Online" (code J6Y)	Ac4, Ar4, An	A 000 827 78 59

Vehicle-specific parameter data



No customer request is left unfulfilled: Through a newly developed operation process, the customer is offered almost all conversions and retrofits, which meet vehicle-specific parameter data.

Product benefits Higher profitability/efficiency; support to ensure adherence to existing legal regulations, increased comfort; value retention and appreciation of your truck; higher safety in road traffic

Note In order to be able to present the customer with a vehicle-specific offer, the retail company shall prepare an XSF ticket that contains the vehicle identification number and the desired retrofit code. Furthermore, the retail company receives a compilation for the parameter data and a list of the required parts within 72 hours

Article designation	Vehicle	Part number
Retrofitting parameter	Ac5, Ac4, An, Ar5, Ar4	A 000 827 75 59

FMS interface fleet management system (code E4B)



The standardized interface is an electronic communication connection for fleet management systems of different manufacturers. Via this interface, vehicle-internal CAN data is translated into the standardized SAE J1939 format and forwarded to the respective system. The data content of the interface is precisely defined and coordinated between the manufacturers. This allows different fleet management systems to easily use the determined vehicle data of the specified manufacturers, irrespective of the brand.

Product benefits

Simplified use and expanded range of services for fleet management systems through standardized interface; reduced costs because interventions in vehicle electronics or new parameterization are not necessary; high functionality and simplified technical processes by using a standard fleet management system in a mixed vehicle fleet

Property

Depending on the vehicle version, the following data can be retrieved as a maximum: cruise control, clutch, power take-off status, accelerator pedal position, total fuel consumption, current fuel consumption, fuel tank fill level, engine rpm, axle load of individual axles, vehicle gross weight, total engine operating hours, vehicle identification number, software identification number, total vehicle kilometer reading, next regular maintenance service, tachograph information, vehicle speed (tachograph), engine coolant temperature, standard FMS information, engine partial load ratio at current vehicle speed

Package contents

3 x A 013 545 76 26 MCP contact socket for the power supply of the FMS device from the SCA/SSAM, 2 x A 013 545 44 26 MQS contact socket for the CAN pick-up at the CGW control unit, 1 x CD for software adaptation

Article designation	Vehicle	Part number
Retrofitting of interface, fleet management system FMS (Code E4B)	Ac5, Ac4, An, Ar, At4	A 000 827 93 59

Parameterizable special module (code E3Y and E3Z)



A 000 446 42 46

The control unit of the parameterizable special module (PSM) is a communication interface through which the body manufacturers integrate additional electronic control units in the electronics system of the vehicle. Direct exchange of information between the vehicle electronics and the bodies, attachments, equipment and trailer and/or semi-trailer takes place by networking using the CAN bus. This ensures high functional reliability of all components subsequent docking takes place without intervention in the electrical and electronics systems of the vehicle.

Product benefits

High functional reliability with all component parts because the aftermarket external systems are docked without the need to adjust the vehicle's electrics or electronics; extension of the functions for semitrailers using the second interface; increase in work efficiency and operating comfort for the driver thanks to additional functions for the semitrailer; supporting argument when reselling because vehicles with PSM can be supplemented with other systems by the buyer without problem

Function

The communication interfaces between the vehicle electronics and retrofitted systems are clearly defined and standardized

Article designation	Vehicle	Part number
Control unit parameterizable special module (code E3Z), for CAN interface 24 Volt according to ISO 11898	Ac4, An, Ar4	A 000 446 42 46
Control unit - Parameterizable special module (Code E3Y); for CAN interface 5 Volt in accordance with ISO 11992	Ac4, An, Ar4	A 000 446 41 46

Truck navigation DVD



[B6 683 0053](#)

Quickly and safely to the destination: with the map for truck navigation on DVD. In combination with code J2D.

Product benefits Latest map version for truck navigation J2D

Article designation	Vehicle	Part number
Truck navigation system DVD 2019 / 2020	Ac4, An, Ar4	B6 683 0053

Index

"

"Economy" drive program (G0U) 111

A

Adapter cable and adapter 93

Air horns..... 21

Ambient lighting 52

Antennas 99

Audio/video adapter set 94

Automatic tire chains 40

Axle load measuring device (code J3Z) 105

B

Back and neck supports..... 80

Bag for the stowage compartment behind the driver's seat 51

Basic cornering assist system 90

Bed, 900 mm 54

Bedding sets 55

Bedding sets 56

Bluetooth CD radio..... 100

C

Camera systems 91

Care kit..... 74

CB radio universal, 12 Volt 102

Chrome border, front 26

Chrome slats, front 12

Cockpit with leather covering (nappa leather) 62

Compressed-air gun (code Y4Z) 74

Compressor refrigerator box (code F84)..... 68

Cover for wheel arch and engine (code P0Q) 32

Curtains..... 63

D

Decorative foils19, 20

Digital clock..... 73

Drive program "fire-service" (code G0X) .. 114

Drive program "fleet" (code G0Z) 112

Drive program "municipal" (code G0S)..... 113

Drive program "offroad" (code G0W) 109

Drive program "power" (code G0V) 110

Drive program "heavy" (code G0Y) 115

Durability test5

E

Electromagnetic compatibility testing.....4

Emergency call system ERA-Glonass 103

Entrance emblem..... 29

Exhaust box shield 33

F

FMS interface fleet management system (code E4B) 118

Footrest cushion 73

Frame covers 30

Framing for Mercedes-Benz logo below windshield 28

H

High Performance Engine Brake (code M5V) 108

I

Illuminated Mercedes star8

J

Jumper cable, 24 V 97

K

Key case 50

Key ring 50

L

Laundry bag for stowage compartment over the windshield..... 51

Leather-clad door handle 62

LED daytime running lights (code L1I)9

LED reading lamp..... 53

Light alloy wheels..... 37

Lockable tank cap (code K5M) 41

Lowered seat base 81

M

Manual coffee maker, 24 Volt (for pads) 71

Mattress cover 58

Mattress PremiumComfort (code D3N and D3M) 57

Mattress protector 59

Mercedes star, cover, black..... 27

Microwave, 24 Volt 72

Mirror covers 31

Mobile LED traffic hazard management light set 42

Mobile phone cradle iPhone (code EU3)... 104

Mobile refrigerator box..... 69

Molton layer and fitted sheets 60

P

Parameterizable special module (code E3Y and E3Z) 119

Plug and socket, 15-pin 96

Plug and socket, ABS/EBS 96

Power connector..... 95

Predictive Powertrain Control - PPC (code G0T) 106

Predictive Powertrain Control Update 107

Protective covers, imitation leather/fur 76

R

Refrigerator, in the drawer/under bed (code Y1X) 70

Remote online (code J6Y) 116

Ribbed floor mats 65

Roof lamp bracket..... 13

Roof lamp bracket, additional headlamps ... 15, 16, 17, 18

Roof lamp bracket rotating beacon..... 14

Rubber floor mats 64

S

Seat base covering 82

Seat belt, red 83

Seat covers, accessory design 79

Seat covers, climate-controlled seats 75

Seat covers, series design..... 77

Seat covers, workshop 78

Sideguard assist (retrofitting code S1R) 88

Sideguard assist S6F permanently active ... 89

Side window wind deflector 45

Spare bulb boxes 101

Stainless steel decorative strips, front spoiler	25
Stainless steel front bar	23
Stainless steel rear axle cover caps.....	34
Stainless steel slats, front	24
Stainless steel steps	22
Stainless steel strips front-end flap	25
Stainless steel trim parts, louvers, side trim	28
Stainless steel trim strip, front end.....	27
Stainless steel wheel nut caps	35
Stainless steel wheel nut protective caps ...	36
Stone chipping protective grille for headlamps (code L4Z)	44
Stowage trays	49
Sun visor with high beam headlamp	10
SurroundView	92
Swiveling table.....	84

T

Thermal paper/bulk package of thermal paper.....	98
--	----

TopFit set.....	61
Trailer socket, 24 V	93
Truck navigation DVD	120

U

USB extension cord	97
--------------------------	----

V

Valve extensions, air pressure gauge	38
Vehicle-specific parameter data	117
Velour floor mats	66
Velour floor mats	67
Voltage reduction adapter	98

W

Warning lamp (code S8D)	43
Welcome Light	11
Windshield wipers with telescoping handle .	39
Winter and summer testing	5



Regarding the information in this catalog: Product changes may have been made since the copy deadline of this printed document, 30.11.2020. The manufacturer reserves the right to make design and form changes, deviations in color as well as changes in scope of delivery during the delivery period if the changes or deviations are reasonable for the buyer keeping in mind the interests of the seller. If the salesperson or the manufacturer uses symbols or numbers to identify the order or the ordered object of purchase, no rights may be derived solely from these. The illustrations and texts may also show accessories and special equipment which are not part of the standard scope of supply. Color deviations are due to the printing process. The illustrations shown are only exemplary and do not necessarily depict the actual state of the original vehicles. Regarding the information in this catalog: Product changes may have been made since the copy deadline of this printed document, 30.04.2020. The manufacturer reserves the right to make design and form changes, deviations in color as well as changes in scope of delivery during the delivery period if the changes or deviations are reasonable for the buyer keeping in mind the interests of the seller. If the salesperson or the manufacturer uses symbols or numbers to identify the order or the ordered object of purchase, no rights may be derived solely from these. The illustrations and texts may also show accessories and special equipment which are not part of the standard scope of supply. Color deviations are due to the printing process. The illustrations shown are only exemplary and do not necessarily depict the actual state of the original vehicles.

Since November 2019, we advise you in the sale and service through Daimler Truck AG. Information about your rights to information, rectification, complain and use your data as well as the data protection controller can be found at <http://www.mercedes-benz.de/datenschutz>.

www.mercedes-benz-trucks.com